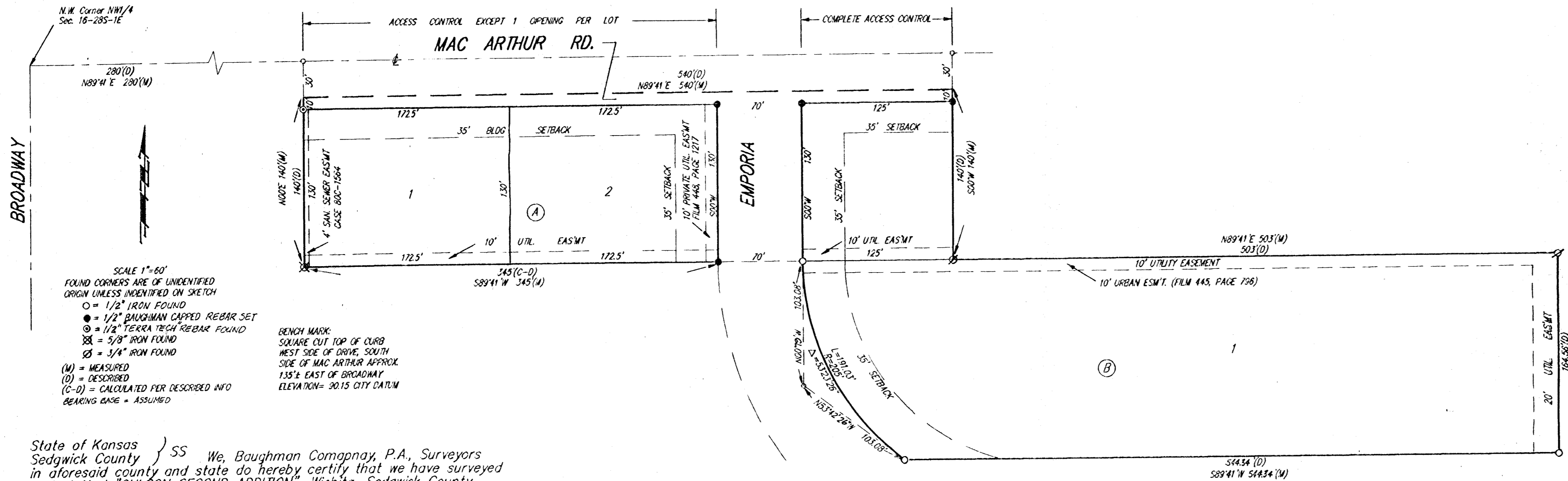


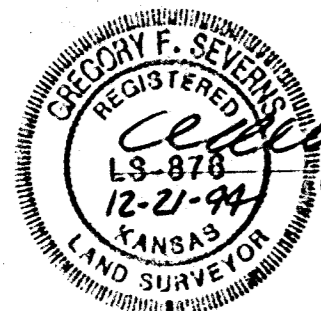
OHLSON SECOND ADDITION

WICHITA, SEDGWICK COUNTY, KANSAS



State of Kansas } SS We, Baughman Company, P.A., Surveyors
Sedgwick County } in aforesaid county and state do hereby certify that we have surveyed
and platted "OHLSON SECOND ADDITION", Wichita, Sedgwick County,
Kansas, and that the accompanying plat is a true and correct exhibit
of the property surveyed and described as beginning 30 feet south and 280
feet east of the N.W. Corner of the NW1/4 of Sec. 16, Twp. 29-S, R-1-E;
thence east 540 feet; thence south 140 feet; thence west 540 feet; thence north
140 feet to the point of beginning, together with Lot 2, Ohlson Addition,
Wichita, Kansas.

Existing public easements are being vacated by virtue of K.S.A. 12-512(b).
Baughman Company, P.A.



Gregory F. Severns
Gregory F. Severns
Surveyor

Know all men by these presents that we,
the undersigned, have caused the land described in the surveyors
certificate to be platted in to lots, blocks and streets to be known as
"OHLSON SECOND ADDITION", Wichita, Sedgwick County, Kansas.
The utility easements are hereby granted as indicated for the con-
struction and maintenance of all utilities. The streets are hereby
dedicated to and for the use of the public. All abutters rights of access
to or from MacArthur Road over and across the north line of Lots 1 and 2,
Block A, and Lot 1, Block B are hereby granted to the City of Wichita provided,
however, that Lots 1 and 2, Block A, shall have access to MacArthur Road
at one location each as shall be determined by the City Engineer of the City of
Wichita, Kansas.

Owner

Thelma Sparks
Thelma Sparks

Brad K. Ohlson Sara F. Ohlson
Brad K. Ohlson Sara F. Ohlson

Equitable Interest

Brad K. Ohlson Sara F. Ohlson
Brad K. Ohlson Sara F. Ohlson

Southwest National Bank

Duane L. Wilson Vice Pres
DUANE L. WILSON (Title)

We, the undersigned, holders of a mortgage on a portion
of the above described property do hereby consent to this plat of "OHLSON
SECOND ADDITION", Wichita, Sedgwick County, Kansas.

Southwest National Bank
Duane L. Wilson Vice Pres
DUANE L. WILSON

State of Kansas } SS The foregoing instrument was acknowledged
Sedgwick County } before me this 15 day of Dec, 1994, by Thelma
Sparks, a single person.

Larry D. Hitchman Notary Public
LARRY D. HITCHMAN
NOTARY PUBLIC
STATE OF KANSAS
My Appl. Exp.

My App't Exp. Dec 24, 1996

State of Kansas } SS The foregoing instrument was acknowledged
Sedgwick County } before me this 15 day of Dec, 1994, by Brad K.
Ohlson and Sara F. Ohlson, husband and wife.

Larry D. Hitchman Notary Public
LARRY D. HITCHMAN
NOTARY PUBLIC
STATE OF KANSAS
My Appl. Exp.

My App't Exp. Dec 24, 1996

State of Kansas } SS The foregoing instrument was
Sedgwick County } acknowledged before me this 19th day of December, 1994, by
Quinn D. Ohlson, VP of Southwest National Bank, on behalf
of the bank.

Nick R. Drolake Notary Public
NICK R. DROLAKE
NOTARY PUBLIC
STATE OF KANSAS
My Appl. Exp.

My App't Exp. 02-10-96

This plat of "OHLSON SECOND ADDITION",
Wichita, Sedgwick County, Kansas, has been submitted to and approved
by the Wichita-Sedgwick County Metropolitan Area Planning Commis-
sion, Wichita, Kansas,
Dated this 18th day of November, 1993.

Wichita-Sedgwick County Metropolitan Area Planning Commission

John W. McKay, Jr. Chairman
John W. McKay, Jr.

Marvin S. Krbat Secretary
Marvin S. Krbat

This plat approved and all dedications shown
hereon accepted by the City Council of the City of Wichita, Kansas
this 24th day of JANUARY, 1994.



Elma Broadfoot Mayor
Elma Broadfoot

Pat Burnett Deputy City-Clerk
Pat Burnett

Entered on transfer record this _____ day
of _____, 1994.

Susan E. Crockett-Spoon County Clerk
Susan E. Crockett-Spoon

State of Kansas } SS This is to certify that this plat has been
Sedgwick County } filed for record in the office of the Register of Deeds, this _____ day
of _____, 1994, at _____ o'clock _____ A.M.; and
is duly recorded.

Pat Kettler Register of Deeds
Pat Kettler

Ed Resa Deputy
Ed Resa