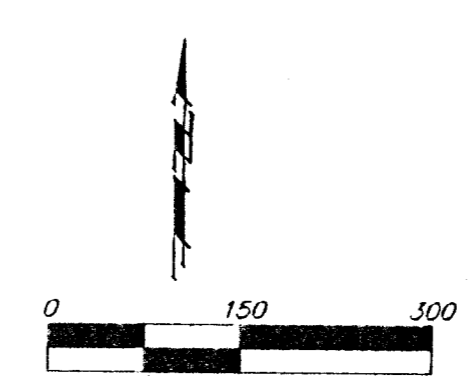
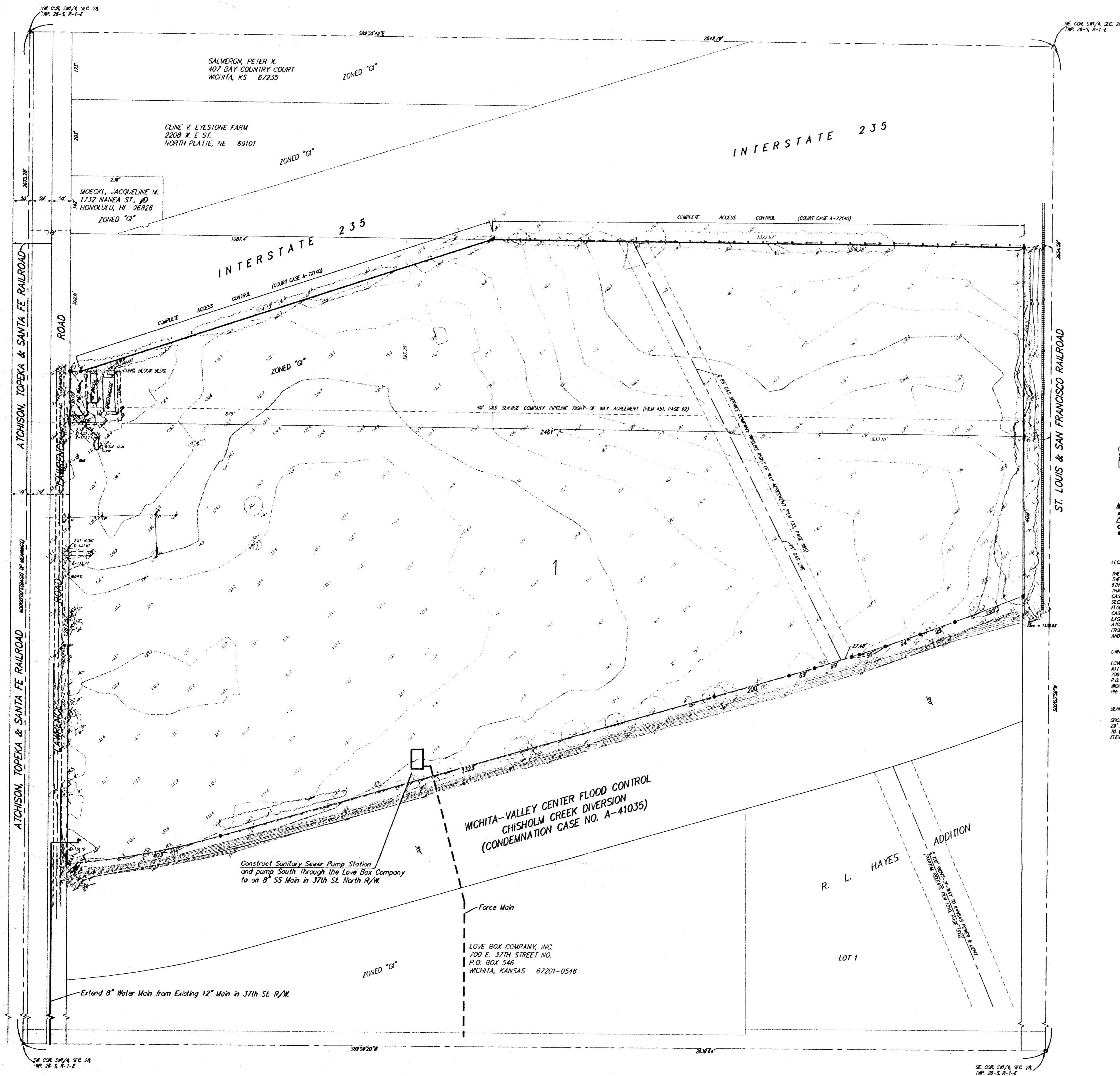


UTILITY PLAN  
**OLD LAWRENCE ROAD ADDITION**  
 SEDGWICK COUNTY, KANSAS



- ▲ = DIFF. PIN OVER STONE (FOUND)
- = 4" RESIN (FOUND)
- △ = STONE (FOUND)
- = 1/2" PIN IN PIPE (FOUND)
- = 4" RESIN w/ BRASSMAN CAP (SET)

LEGAL DESCRIPTION  
 THE SOUTH 30 ACRES OF THE NORTH 40 ACRES OF  
 THE SW 1/4 OF SEC. 28, TWP. 28-S, R-1-E OF THE  
 8TH P.M., SEDGWICK COUNTY, KANSAS EXCEPT THEREFROM  
 THAT PART CONDEMNATED FOR HIGHWAY PURPOSES IN  
 CASE NO. A-12140, TOGETHER WITH THAT PART OF SAID  
 SEC. 28 LONG NORTH OF THE WICHITA-VALLEY CENTER  
 FLOOD CONTROL, CHISHOLM CREEK DIVERSION (CONDEMNATION  
 CASE NO. A-41035) EXCEPT THE NORTH 40 ACRES THEREOF,  
 EXCEPTING FROM BOTH TRACTS THE RIGHT-OF-WAY OF THE  
 ATCHISON, TOPEKA AND SANTA FE RAILROAD AND EXCEPTING  
 FROM BOTH TRACTS THE RIGHT-OF-WAY OF THE ST. LOUIS  
 AND SAN FRANCISCO RAILROADS.

OWNER  
 LOVE BOX COMPANY, INC.  
 700 E. 37TH STREET NORTH  
 P.O. BOX 546  
 WICHITA, KANSAS 67201  
 PH. 316-638-0850

MONUMENT  
 BRADSHAW B 37TH ST. N., CITY OF WICHITA DISC. 36" W. &  
 20" N. OF E. CORNER 11.4 S.S.C. TO CONC. P.P. B 42.5 SSW  
 TO E. POINT 30.00' N.W. CORNER.  
 ELEV. = 1051.17 CITY DATUM