

ONE KELLOGG PLACE ADDITION

WICHITA, SEDGWICK COUNTY, KANSAS

BENCH MARK
Zelta Drive & Kellogg
City of Wichita Bench Mark Disc, 75' west and 8' north
of the North 1/4 Cor., Sec. 27, T 27-S, R-2-E.
(1/2 mile east of Greenwich Road)
Elev. = 174.622 City Datum (1382.022 M.S.L.)

BENCH MARK
Top of Concrete Highway Right-of-Way Marker, 83' south
and 1.7' west of the North 1/4 Cor., Sec. 27, T 27-S, R-2-E.
Elev. = 178.22 City Datum (1383.62 M.S.L.)

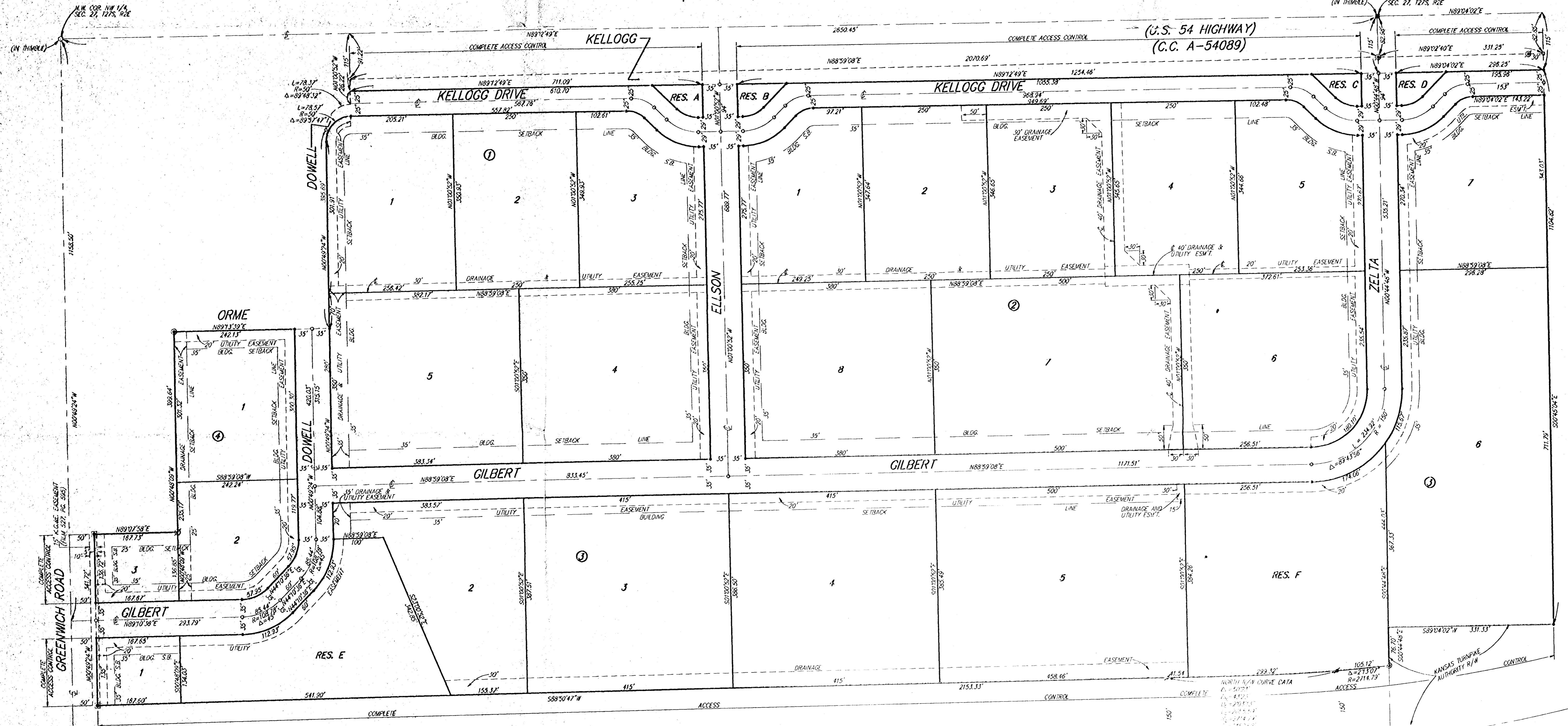
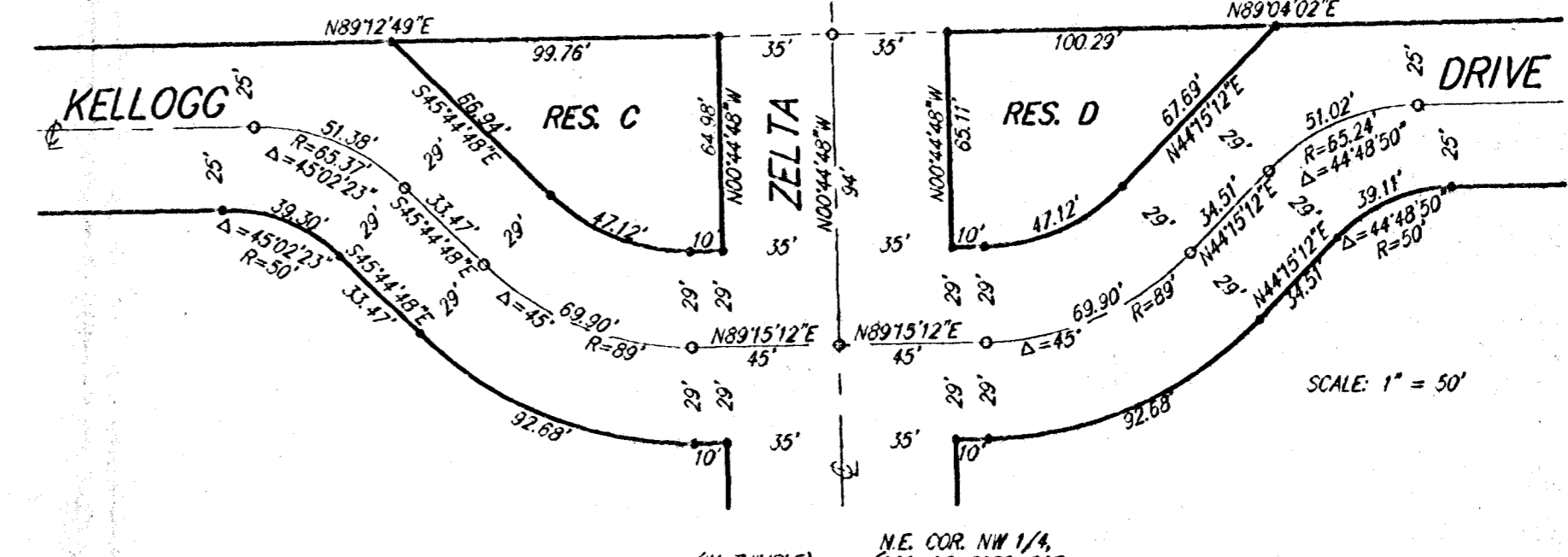
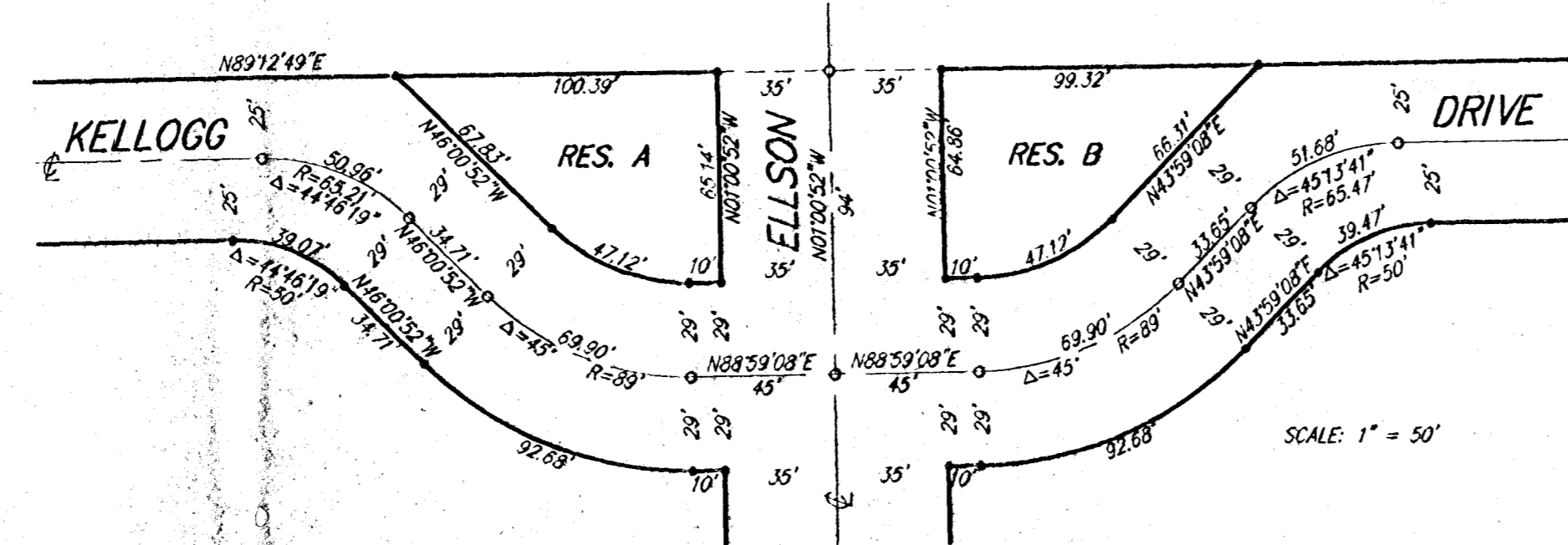
BENCH MARK
"C" Out, Top of Curb, 14.5' south and 25' west of the
S.E. Corner of Leasing Addition.
Elev. = 168.37 City Datum (1353.77 M.S.L.)

1" = 100'
ADDITIONAL BUILDING SETBACKS FOR LOTS 1, 2,
AND 3, BLOCK 1, LOTS 1, 2, 3, 4, & 5, BLOCK 2,
AND LOT 7, BLOCK 3 ESTABLISHED IN COMMUNITY
LINE PLAN OP-106, WHICH IS ON FILE IN THE
WICHITA METROPOLITAN AREA PLANNING DEPT.
OFFICE.

- = 1/4" IRON (FOUND)
- = 1/2" IRON (FOUND)
- = 1/2" REBAR (FOUND)
- = 3/4" REBAR (FOUND)
- = 5/8" REBAR (FOUND)
- = 1" REBAR (FOUND)
- = 1 1/2" REBAR W/ "DORDECKE" CAP (FOUND)
- = 1 1/2" REBAR W/ "BAUGHMAN" CAP (SET)

MINIMUM BUILDING PAD ELEVATIONS
FOR LOWEST OPENING OF STRUCTURE

LOT	BLOCK	City Datum	M.S.L.
1	J	165.00	1352.40
2	J	168.00	1353.40
5	J	171.50	1358.90
6	J	171.50	1358.90



KANSAS TURNPIKE AUTHORITY