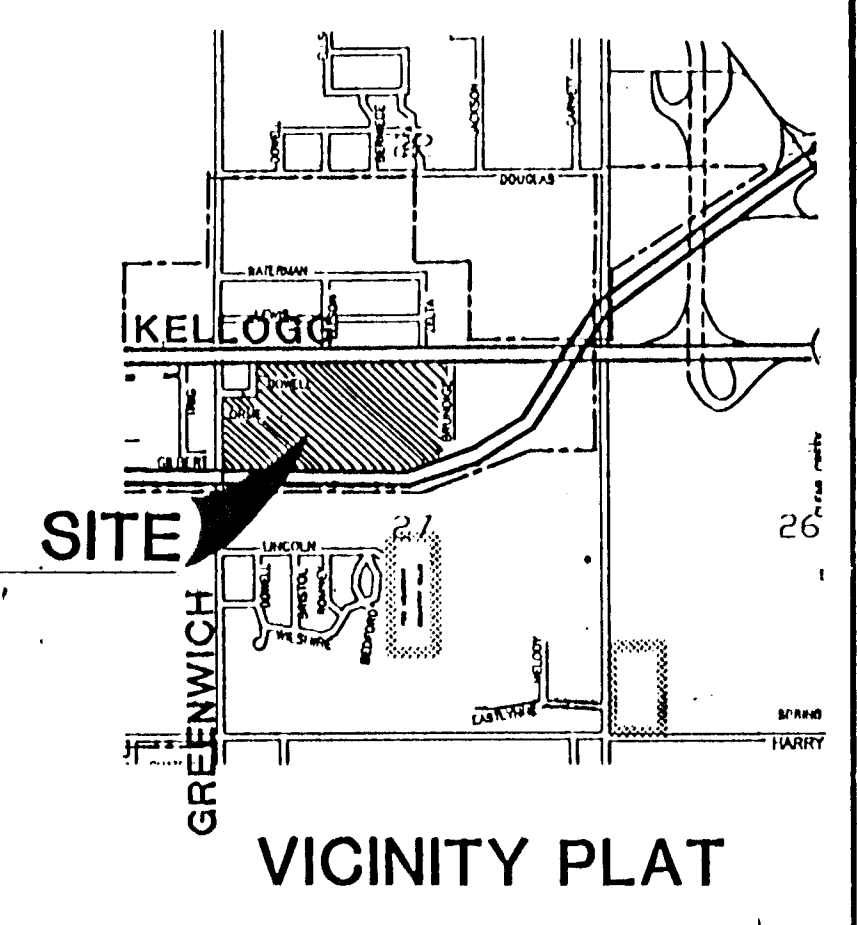
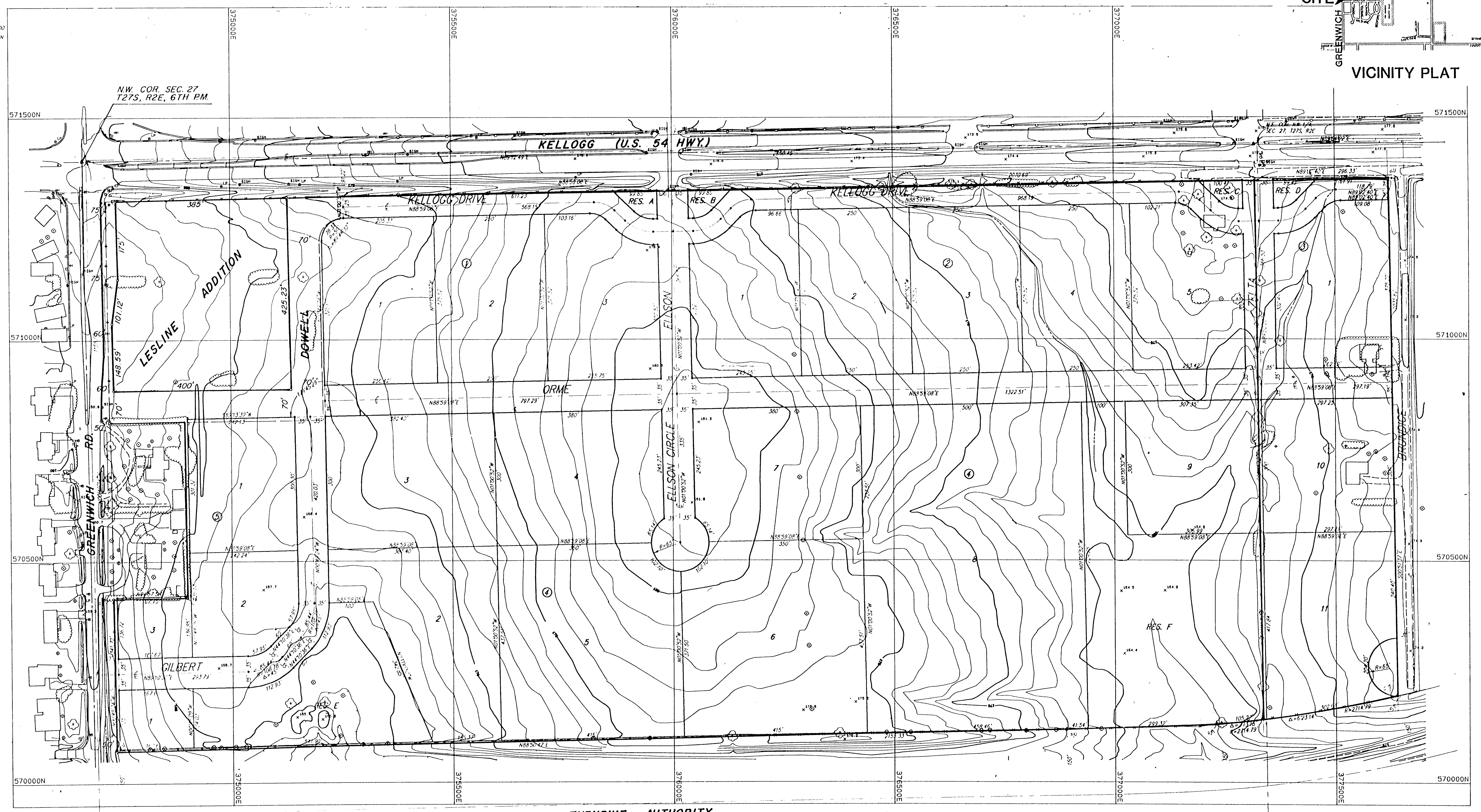


Kellogg PRELIMINARY PLAT
ONE GREENWICH PLACE ADDITION

WICHITA, SEDGWICK COUNTY, KANSAS



1" = 100'
 • = P.W.



NW. COR. SEC. 27
 T27S, R2E, 6TH PM.

KANSAS TURNPIKE AUTHORITY

sim slw