

O'REILLY 2ND ADDITION

WICHITA, SEDGWICK COUNTY, KANSAS

State of Kansas) SS We, Baughman Company, P.A., Surveyors in
Sedgwick County) do hereby certify that we have surveyed
and platted "O'REILLY 2ND ADDITION", Wichita, Sedgwick County, Kansas,
and that the accompanying plat is a true and correct exhibit of the
property surveyed, described as and being a replat of Lot 1, Parker
Trust Second Addition, Wichita, Kansas, Sedgwick County, Kansas,
TOGETHER with the north 65 feet of Lot 1, Parker Pawnee Trust
Addition, Wichita, Kansas, Sedgwick County, Kansas.

Existing public easements and dedications being vacated by virtue
of K.S.A. 12-512(b).
Baughman Co., P.A.

This plat of "O'REILLY 2ND ADDITION", Wichita,
Sedgwick County, Kansas has been submitted to and approved by the
Wichita, Sedgwick County Metropolitan Area Planning Commission,
Wichita, Kansas.

Dated this _____ day of _____, 1996.
Wichita-Sedgwick County Metropolitan Area Planning Commission

John C. Frye Chairman

Marvin S. Krout Secretary

This plat approved and all dedications
shown hereon accepted by the City Council of the City of Wichita,
Kansas, this _____ day of _____, 1996.

Michael G. Conrey Surveyor

Bob Knight Mayor

Pat Burnett City Clerk

Entered on transfer record this _____ day
of _____, 1996.

Susan E. Crockett-Spoon County Clerk

Know all men by these presents that we,
the undersigned, have caused the land in the surveyors certificate
to be platted into a Lot to be known as "O'REILLY 2ND ADDITION",
Wichita, Sedgwick County, Kansas. The utility easements are hereby
granted as indicated for the construction and maintenance of all public
utilities. All abutters rights of access to or from Pawnee Avenue over
and across the north line of Lot 1 are hereby granted to the City of
Wichita, Kansas provided, however, that said Lot 1 shall have access
to Pawnee Avenue at one location over all except the west 100 feet
of said north line as shall be determined by the City Engineer of the
City of Wichita, Kansas.

Parker Real Estate Trust dated May 1, 1968

Marcille Alta Wohlgenuth, Trustee
1/k/a Marcille Alta Hirleman

Dorothy Bernice Nibarger, Trustee

John S. Hoover, Trustee

State of Kansas) SS This is to certify that this plat has been
Sedgwick County) filed for record in the office of the Register of Deeds, this _____ day
of _____, 1996, at _____ o'clock _____ M.; and is duly
recorded.

Pat Kettler Register of Deeds

Ed Resa Deputy

State of _____)
County) SS The foregoing instrument acknowledged before
me, this _____ day of _____, 1996, by Dorothy Bernice Nibarger,
Trustee of the Parker Real Estate Trust dated May 1, 1968, on behalf of
the trust.

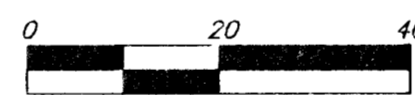
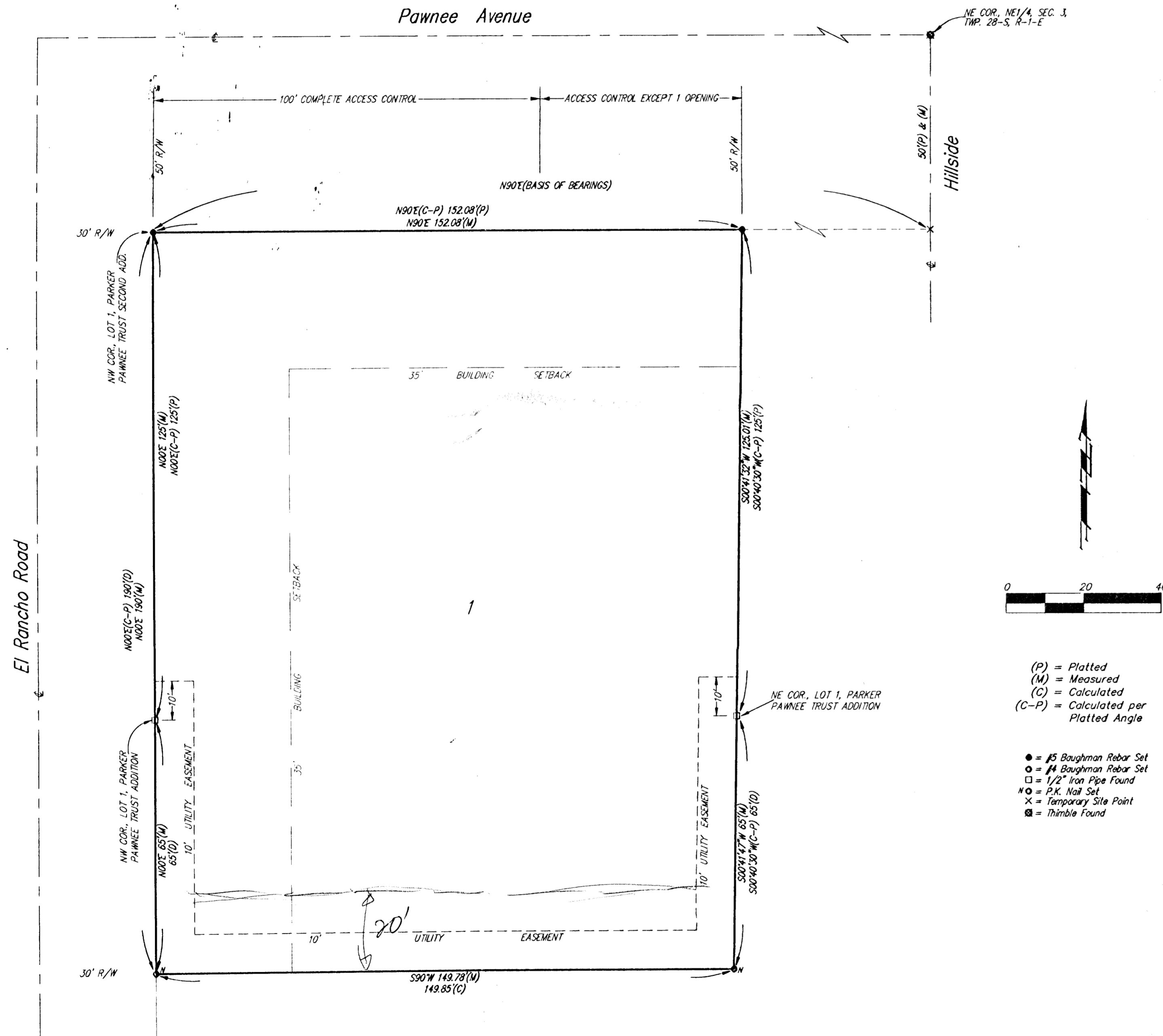
Notary Public
My App't. Exp. _____

State of _____)
County) SS The foregoing instrument acknowledged before
me, this _____ day of _____, 1996, by Marcille Alta Wohlgenuth
1/k/a Marcille Alta Hirleman, Trustee of the Parker Real Estate Trust
dated May 1, 1968, on behalf of the trust.

Notary Public
My App't. Exp. _____

State of _____)
County) SS The foregoing instrument acknowledged before
me, this _____ day of _____, 1996, by John S. Hoover, Trustee
of the Parker Real Estate Trust dated May 1, 1968, on behalf of the trust.

Notary Public
My App't. Exp. _____



- (P) = Platted
- (M) = Measured
- (C) = Calculated
- (C-P) = Calculated per Platted Angle
- = #5 Baughman Rebar Set
- = #4 Baughman Rebar Set
- = 1/2" Iron Pipe Found
- ⊙ = P.R. Nail Set
- x = Temporary Site Point
- = Trundle Found