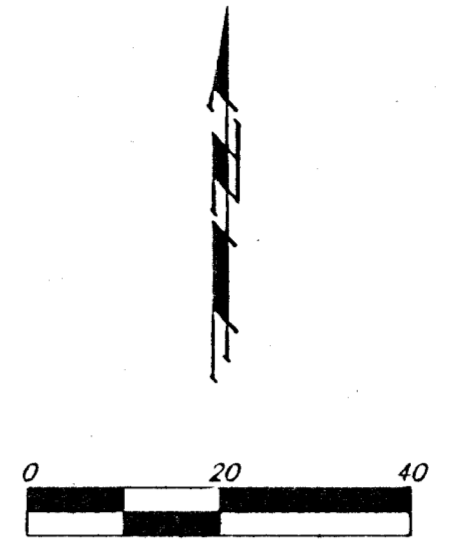


# SKETCH PLAT

## O'REILLY 2ND ADDITION

### WICHITA, SEDGWICK COUNTY, KANSAS



- (P) = Platted
- (M) = Measured
- (C) = Calculated
- (C-P) = Calculated per Platted Angle
- = #5 Baughman Rebar Set
- = #4 Baughman Rebar Set
- = 1/2" Iron Pipe Found
- ⊙ = P.K. Nail Set
- × = Temporary Site Point
- = Thimble Found

**LEGAL DESCRIPTION**

Lot 1, Parker Pawnee Trust Second Addition, Wichita, Kansas, Sedgwick County, Kansas. Together with the north 65 feet of Lot 1, Parker Pawnee Trust Addition, Wichita, Kansas, Sedgwick County, Kansas.

**BENCHMARK:**

Hillside and Glen Oaks, City of Wichita Bench Mark Northeast corner wing, R.C.B.C. 100 feet more or less south of Glen Oaks. 700 feet more or less south of Pawnee. Elevation = 104.36 City Datum. Conversion to Mean Sea Level = + 1187.4

**AREA:** 28,677 Sq. Ft. or 0.66 Acres.

**ZONING**

Subject Property is presently Zoned L.C. (Limited Commercial)

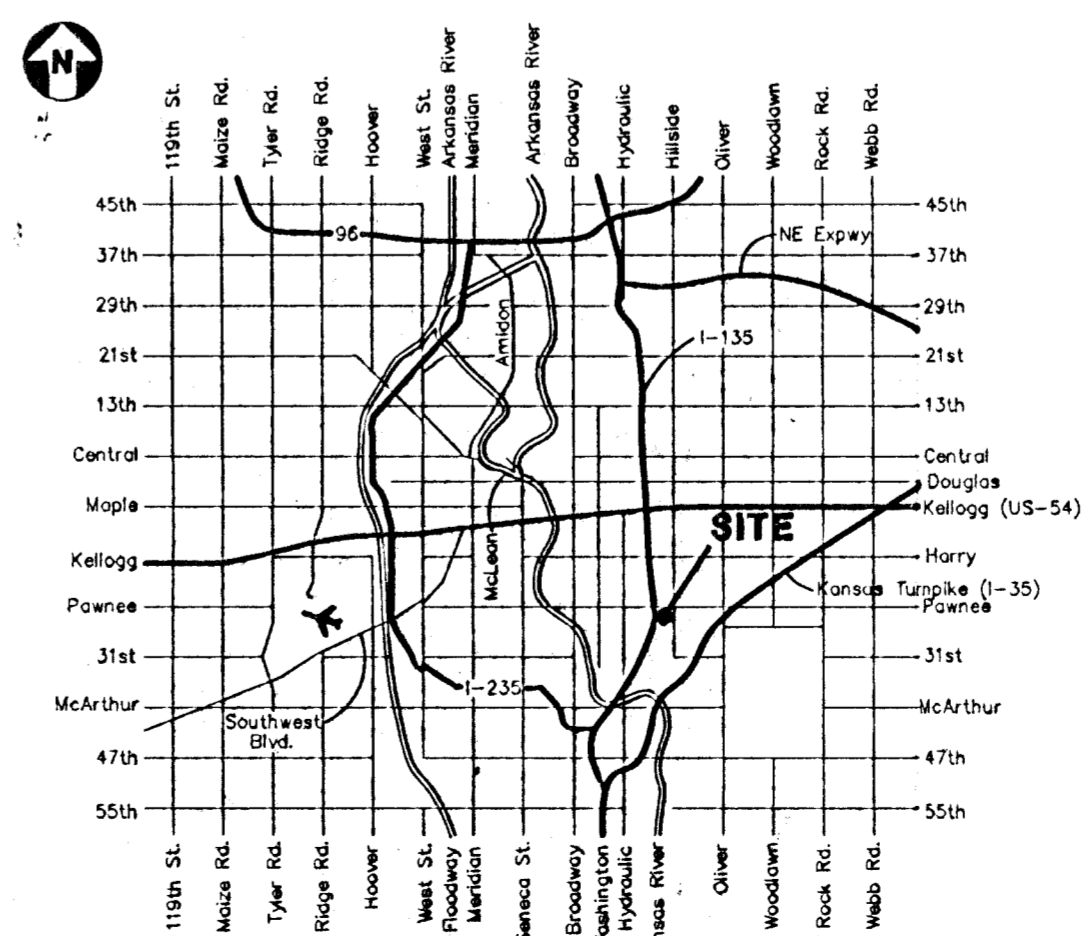
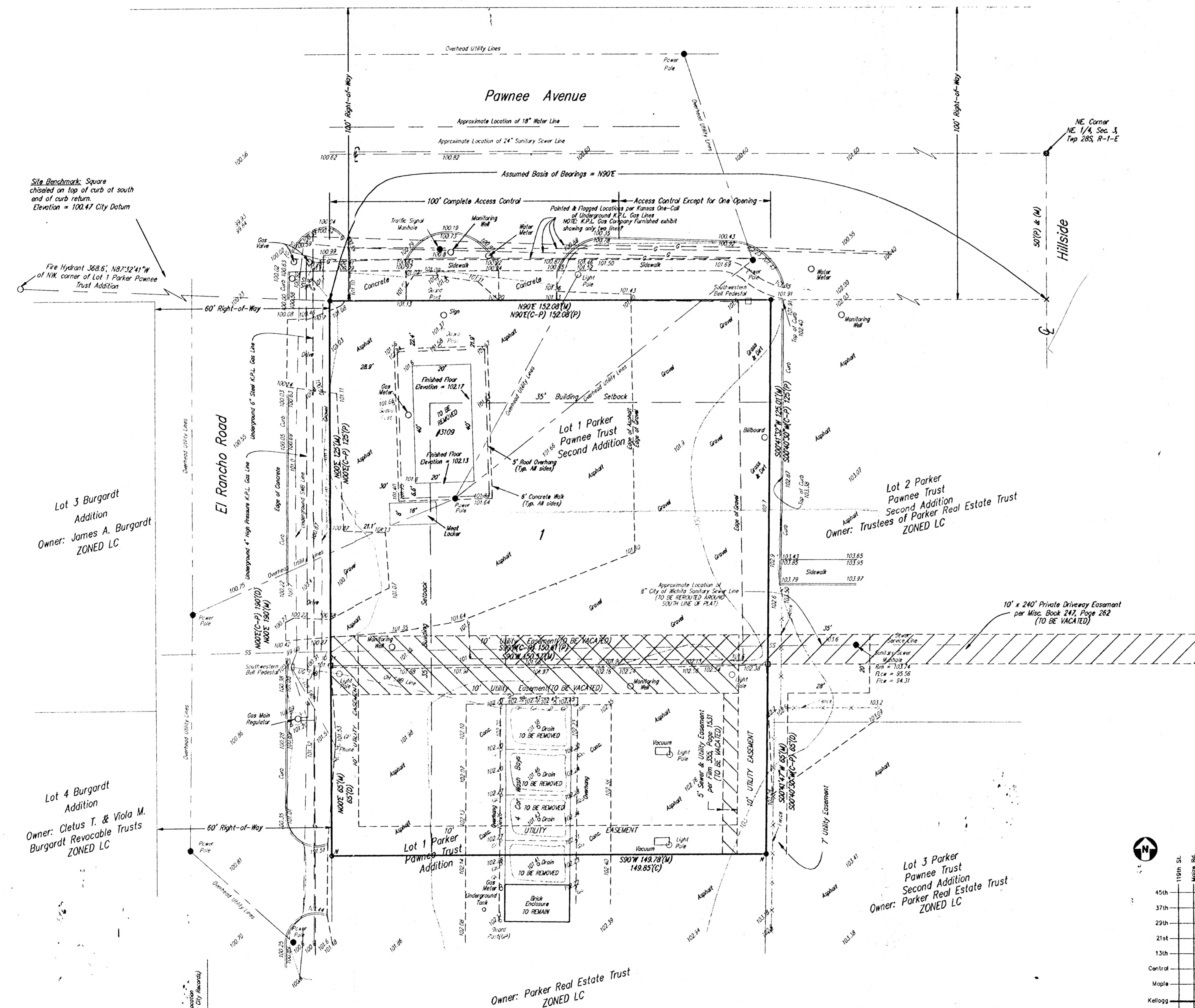
**OWNER**

Marcille Alta Wahlpemuth, formerly known as Marcille Alta Hirleman, Dorothy Bernice Nibarge and John S. Hoover, Trustees of the Parker Real Estate Trust dated May 1, 1968.

**PROPOSED OWNER**

O'Reilly Automotive, Inc.  
P.O. Box 1156, Springfield, MO 65801  
Phone: (417)862-3333

**NOTE:** The utility locations represented on this survey were compiled by both field observation and information from the various utility companies. If any construction or relocation is planned for this site the various utility companies should be requested to verify their locations in the field prior to final design or construction.



October 21, 1996