

FINAL PLAT OF
CRESTVIEW COUNTRY CLUB ESTATES
OVERBROOK THIRD ADDITION
AN ADDITION TO SEDGWICK COUNTY, KANSAS

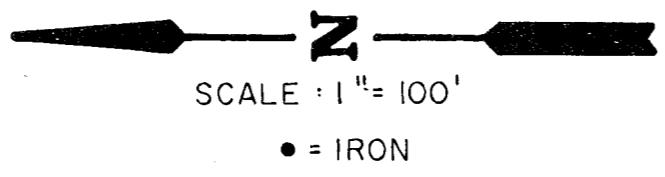
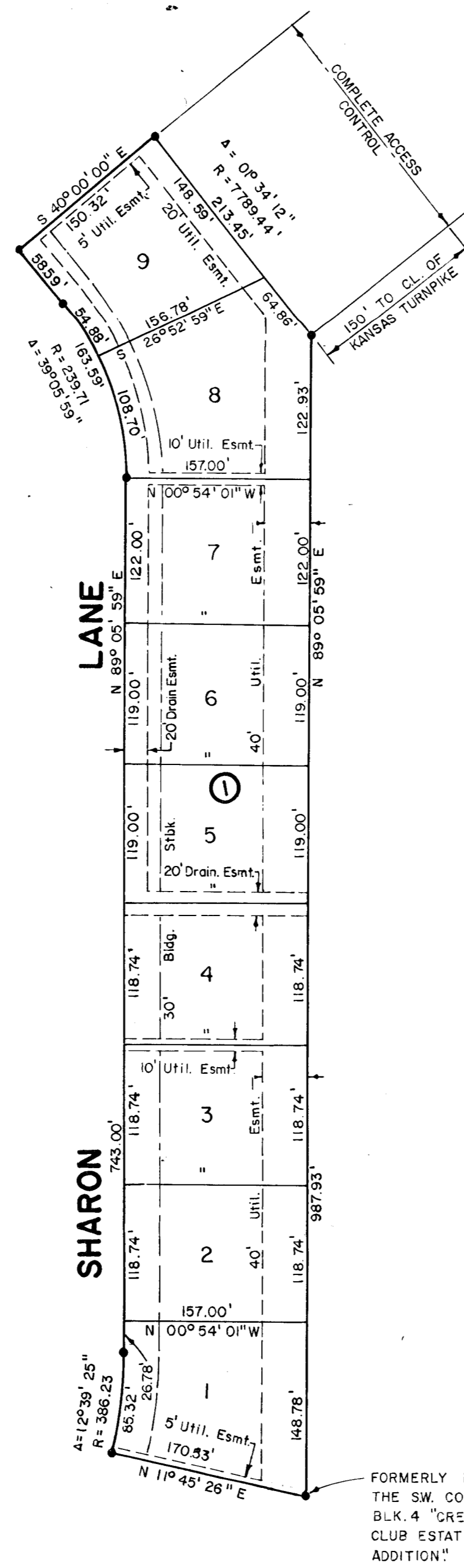
I, Kenneth H. Bengtson, a Civil Engineer in Kansas, do hereby certify that I have been in responsible charge of surveying and platting "Crestview Country Club Estates, Overbrook Third Addition", an addition to Sedgwick County, Kansas, into lots and a block the same being accurately set forth in the accompanying plat and described as follows:

A tract of land in the southwest quarter of Section 13, Township 27 south, Range 2 east described more particularly as:

A replat of lots 2 through 8, Block 4, Crestview Country Club Estates, Overbrook Addition, an addition to Sedgwick County, Kansas located in the SW 1/4 13-27-2E of the 6th PM.

I hereby certify that the details on this plat are correct to the best of my knowledge and belief this 7 day of APRIL, 1981.

By: Kenneth H. Bengtson
Kenneth H. Bengtson
VAN BOREN-HAZARD-STALLINGS
Architects-Engineers-Planners
260 N. Rock Road, Suite 250
Wichita, Kansas 67206



Know all men by these presents that we the undersigned property owners of the land as above set forth in the Engineer's Certificate, have caused the same to be surveyed and platted into lots and a block, the same to be known as "Crestview Country Club Estates, Overbrook Third Addition", an addition to Sedgwick County, Kansas. Easements for the construction and maintenance of public utilities and storm sewers are hereby granted. All abutter's rights of access to or from the Kansas Turnpike over and across the southeasterly line of Lots 8 and 9, Block 4, are hereby granted to the appropriate governing body.

[Signature]
National Reserve Life Insurance Company,
a corporation. By: Louis W. Gates, Vice President
and Trust Company, Wichita, J.D. Newman, Vice
President, their attorney-in-fact.
State of Kansas ss:
County of Sedgwick

Be it remembered that on this 7th day of April, 1981, before me a notary public in and for said state and county, National Reserve Life Insurance Company, a corporation by The 4th Nat'l Bank & Trust by J.D. Newman to me personally known to be the same person who executed the foregoing instrument of writing and duly acknowledged the execution of the same. In testimony whereof I have hereunto set my hand and affixed my notarial seal the day and year above written.

[Notary Seal]
Arthur J. Bauman
Notary Public
My Appointment Expires: February 2, 1983

State of Kansas ss:
County of Sedgwick

Be it remembered that on this 7th day of April, 1981 before me a notary public in and for said state and county, National Reserve Life Insurance Company, a corporation by Louis W. Gates, Vice President to me personally known to be the same person who executed the foregoing instrument of writing and duly acknowledged the execution of the same. In testimony whereof I have hereunto set my hand and affixed my notarial seal the day and year above written.

[Notary Seal]
Linda Holgreen
Notary Public
My Appointment Expires: 3-10-83

This plat of "Crestview Country Club Estates, Overbrook Third Addition" has been submitted to and approved by the Wichita-Sedgwick County Metropolitan Area Planning Commission, Wichita, Kansas.

Dated this 12th day of FEBRUARY, 1981.
Wichita-Sedgwick County Metropolitan Area Planning Commission

James L. Gardner, II Vice-Chairman
Robert A. Lakin Secretary

This plat approved and all dedications shown hereon, if any, accepted by the City Commission of the City of Wichita, Kansas this 27th day of February, 1981.

Robert C. Brown Mayor
Donald C. Gissick City Clerk

This plat approved and all dedications shown hereon, if any, accepted by the Board of County Commissioners of Sedgwick County, Kansas this day of , 1981.

Donald E. Gragg Chairman
Jack Spratt Commissioner
Tom Scott Commissioner

Attest: Dorothy K. White County Clerk
Entered on transfer record this day of , 1981

Dorothy K. White County Clerk

State of Kansas ss:
County of Sedgwick

This is to certify that this instrument was filed for record in the Register of Deeds office at o'clock on the day of , 1981.

Bette F. McCart Register of Deeds
Pat Kettler Deputy