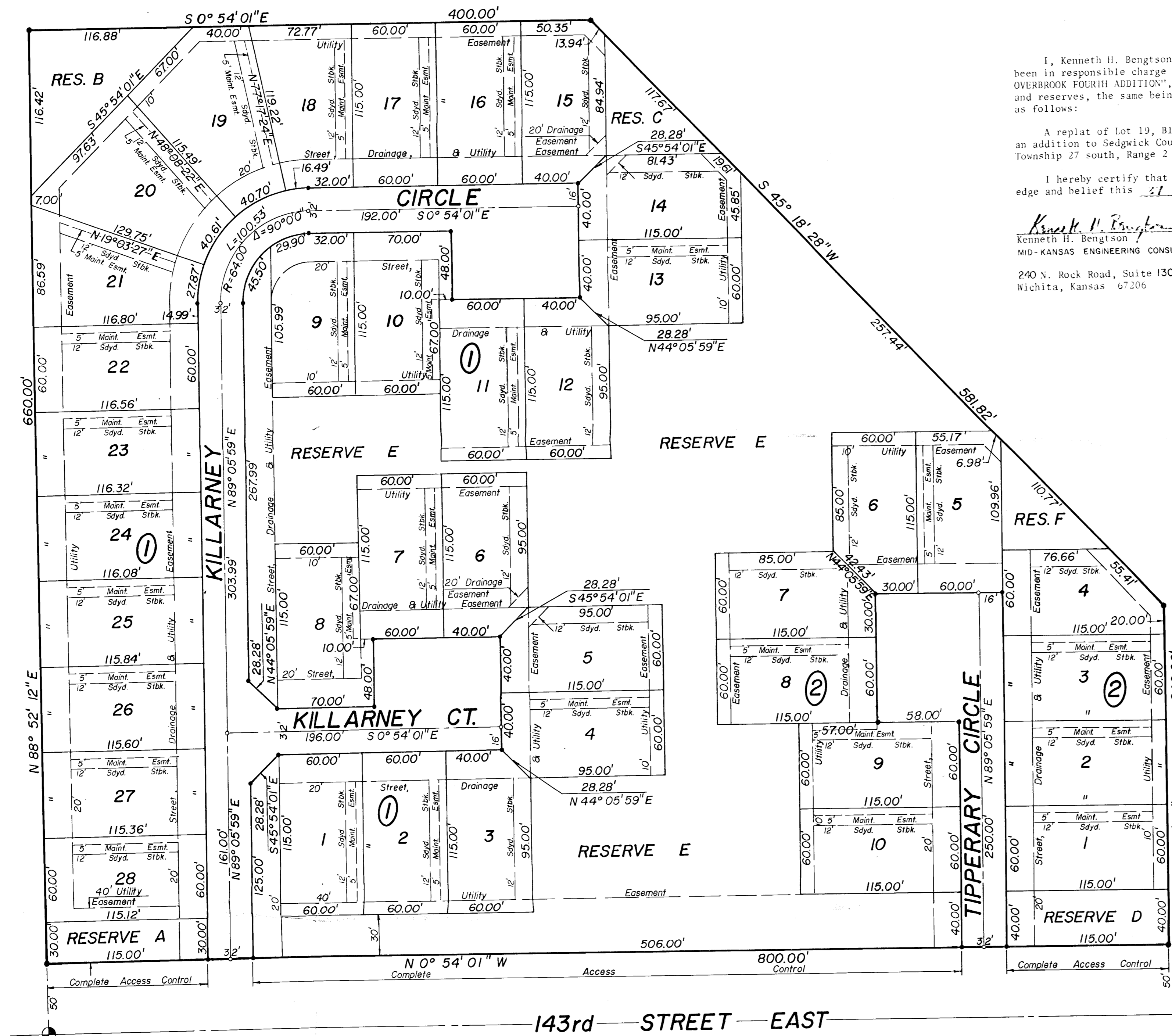


Final Plat of
Crestview Country Club Estates
OVERBROOK FOURTH ADDITION

an Addition to Sedgwick County, Kansas



I, Kenneth H. Bengtson, a Civil Engineer in Kansas do hereby certify that I have been in responsible charge of surveying and platting "Crestview Country Club Estates, OVERBROOK FOURTH ADDITION", an addition to Sedgwick County, Kansas into lots, blocks and reserves, the same being accurately set forth in the accompanying plat and described as follows:

A replat of Lot 19, Block 3, Crestview Country Club Estates, OVERBROOK ADDITION, an addition to Sedgwick County, Kansas located in the southwest quarter of Section 13, Township 27 south, Range 2 east of the 6th P.M.

I hereby certify that the details on this plat are correct to the best of my knowledge and belief this 27 day of April, 1983.

Kenneth H. Bengtson
Kenneth H. Bengtson
MID-KANSAS ENGINEERING CONSULTANTS P.A.
240 N. Rock Road, Suite 130
Wichita, Kansas 67206

Know all men by these presents that we the undersigned property owners of the land as above set forth in the Civil Engineer's Certificate have caused the same to be surveyed and platted into lots, blocks and reserves, the same to be known as "Crestview Country Club Estates, OVERBROOK FOURTH ADDITION", an addition to Sedgwick County, Kansas. The streets are hereby dedicated to and for the use of the public. Reserves "A", "B", "C", "D", "E" and "F" are platted for open space, public utility easements, drainage and buffer zones and shall be owned and maintained by the Homeowner's Association. Easements for the streets, drainage and construction and maintenance of public utilities are hereby granted. All abutter's rights of access to or from Reserves "A", "B", or "E" over and across the east right of way line of 143rd Street East are hereby granted to Sedgwick County, Kansas. Maintenance easements granted are for access by the adjoining property owner for maintenance of their structures and for a 2.0 foot roof overhang.

James L. Gardner, II
National Reserve Life Insurance Company,
a corporation
By: The Fourth National Bank and Trust
Company, Wichita

Louis W. Gates
Tomlinson Oil Co Inc
By: Louis W. Gates, Vice President

STATE OF KANSAS ss:
COUNTY OF SEDGWICK

This plat approved and all dedications shown hereon, if any, accepted by the Board of City Commissioners of the City of Wichita, Kansas this 11th day of June, 1983.

Margalee Wright Mayor
Margalee Wright
Donald E. Giesick City Clerk
Donald E. Giesick

Notary Public
Appointment Expires: 4/1/87

STATE OF KANSAS ss:
COUNTY OF SEDGWICK

This plat approved and all dedications shown hereon, if any, accepted by the Board of County Commissioners of Sedgwick County, Kansas this day of _____, 1983.

Jack Spratt, Chairman
DAVID E. GRAY, Commissioner
Tom SCOTT, Commissioner
Attest: Dorothy K. White, County Clerk

Notary Public
Appointment Expires: 3-12-87

STATE OF KANSAS ss:
COUNTY OF SEDGWICK

This is to certify that this instrument was filed for record in the Register of Deeds Office at _____ o'clock on this _____ day of _____, 1983.

Bette F. McGill, Register of Deeds
Pat Kettler, Deputy

Wichita-Sedgwick County Metropolitan Area Planning Commission
James L. Gardner, II Chairman
Robert A. Lakin Secretary
Robert A. Lakin

Entered on transfer record this _____ day of _____, 1983.
Dorothy K. White, County Clerk