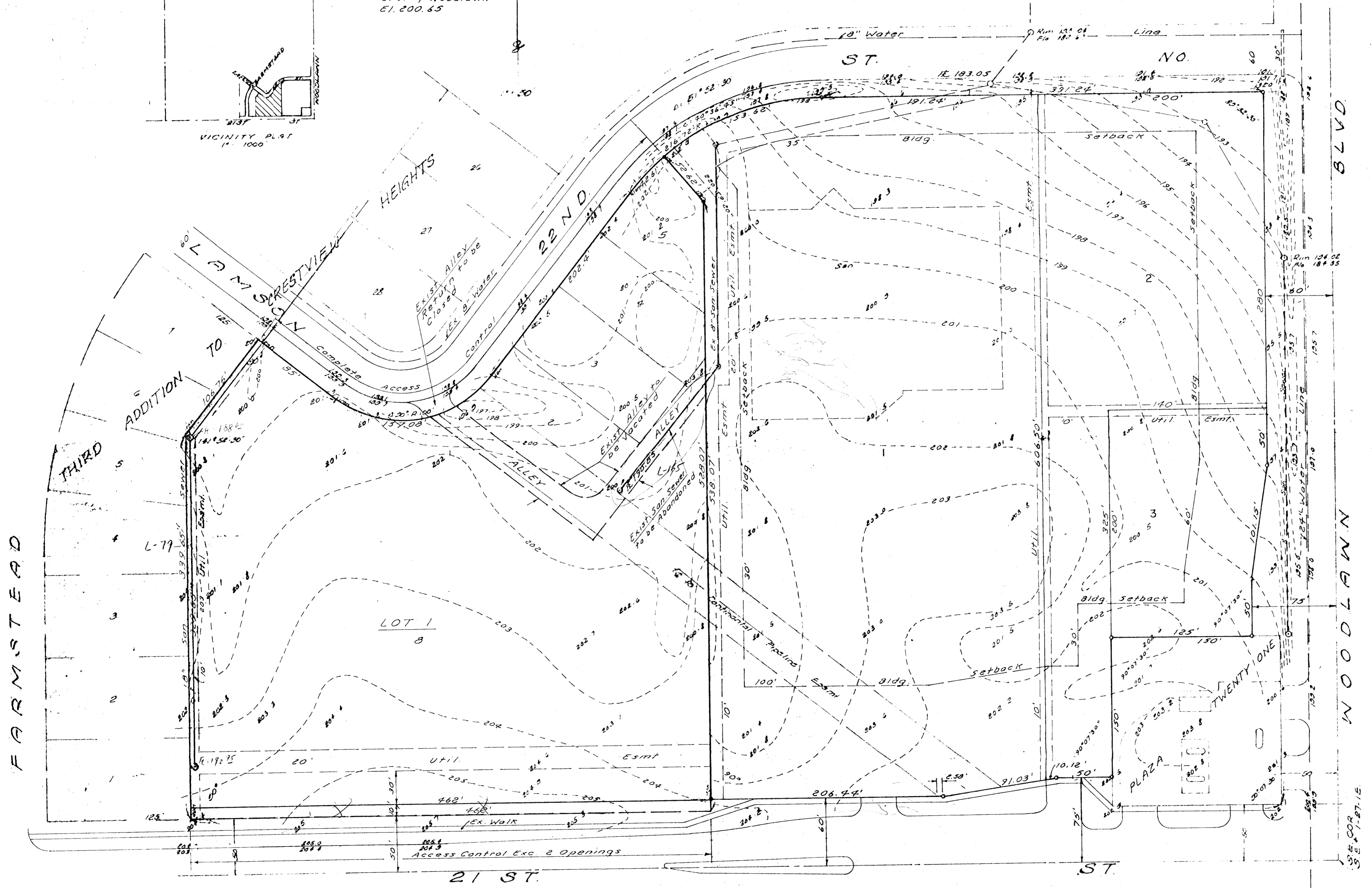
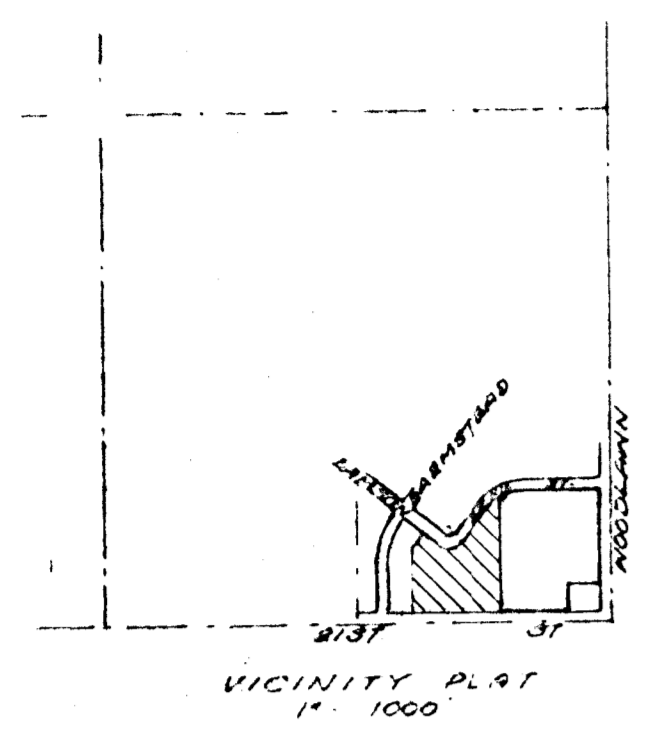


CLOE ENGLISH MANOR

3.M. City disc 95.4'
E. of 95.4' N. E.
21st & Woodlawn
E1. 200.65



Note: Building Setbacks
to conform to
Associated C.U.P.

OXFORD SQUARE ADDITION

A REPLAT OF LOTS 2 & 3 & PART OF LOTS 1, 4 & 5, BLK. 1 & PART
OF LOT 8, BLK. 7, THIRD ADDITION TO CRESTVIEW HEIGHTS

Nov. 2, 1983

BAUGHMAN COMPANY, P.A.
SURVEYING & ENGINEERING
316/262-7271 • 330 LAURA • WICHITA, KANSAS 67211