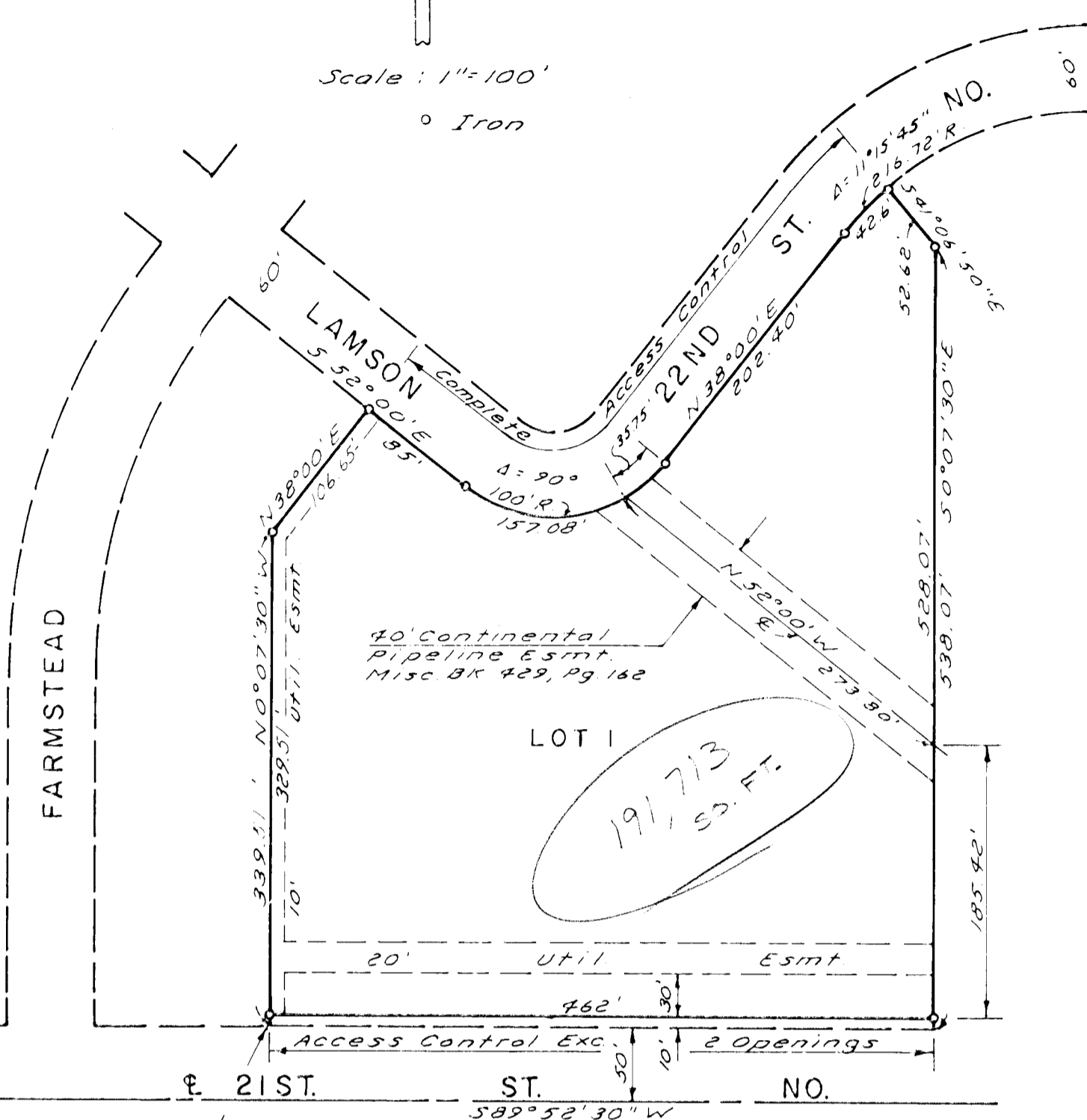


# OXFORD SQUARE ADDITION

WICHITA, KANSAS

Building Setbacks to Conform to Associated Community Unit Plan #DP-56



This plat of "OXFORD SQUARE ADDITION", Wichita, Kansas, has been submitted to and approved by the Wichita-Sedgwick County Metropolitan Area Planning Commission, Wichita, Kansas, Dated this 15<sup>th</sup> day of DECEMBER, 1983

Wichita-Sedgwick County Metropolitan Area Planning Commission

James A. Larkin Vice Chairman  
James C. Wilson  
Robert A. Lakin Secretary

This plat approved and all dedications shown hereon accepted by the Board of City Commissioners, Wichita, Kansas, this 15<sup>th</sup> day of DECEMBER, 1983

Donald C. Linsieck Mayor  
Donald C. Linsieck City Clerk

This plat approved and all dedications shown hereon accepted by the Board of County Commissioners, Sedgwick County, Kansas, this 15<sup>th</sup> day of DECEMBER, 1983

Jack Spratt Chairman  
Donald E. Gregg Commissioner  
Tom Scott Commissioner  
Dorothy K. White County Clerk

Entered on transfer record this 15<sup>th</sup> day of DECEMBER, 1983

Dorothy K. White County Clerk

State of Kansas } S.S. This is to certify that this Sedgwick County } S.S. This is to certify that this plat has been filed for record in the Office of the Register of Deeds this 15<sup>th</sup> day of DECEMBER, 1983, at 10 o'clock, A, and is duly recorded.

Bette K. McCort Register of Deeds  
Pat Kettler Deputy

We, The Mission Bank, holder of a mortgage on the above described property, do hereby consent to this plat of "OXFORD SQUARE ADDITION".

The Mission Bank

H. Richard Noon

State of Kansas } S.S. The foregoing instrument was acknowledged before me this 15<sup>th</sup> day of DECEMBER, 1983, by H. Richard Noon, of the Mission Bank, on behalf of the bank.

Alvin G. Williams Notary Public  
 My Commission Expires May 4, 1984

State of Kansas } S.S. We, Baughman Company, P.A., Sedgwick County } S.S. Surveyors in aforesaid county and state, do hereby certify that we have surveyed and platted "OXFORD SQUARE ADDITION", Wichita, Kansas, and that the accompanying plat is a true and correct exhibit of the property surveyed, described as a replat of lots 2 and 3, Block 1, and that part of Lots 1, 4 and 5, Block 1, and Lot 8, Block 7, all in Third Addition to Crestview Heights, Wichita, Kansas, lying in the SE 1/4 of Section 1, T27S, R1E, lying west of the following described line; Beginning at a point on the south line of said Lot 8, said point being 462 feet east of the SW corner thereof; thence northerly, at right angles to said south line, 538.07 feet to the northeasterly line of said Lot 5; thence northwesterly along said northeasterly line, 52.62 feet to the northeasterly corner of said Lot 5, and including that part of the public alley lying west of the above described line and the south line of Lamson being vacated by virtue of K.S.A. 12-512 (b).

Date May 10, 1984 Baughman Company, P.A.

John E. Lundblad Surveyor  
John E. Lundblad

Know all men by these presents, that we, the undersigned, have caused the land described in the surveyors certificate to be platted into a lot and street to be known as "OXFORD SQUARE ADDITION", Wichita, Kansas. The easements are hereby granted as indicated for the construction and maintenance of public utilities. The street is hereby dedicated to and for the use of the public. All abutters rights of access to 21st St. North and 22nd St. are hereby granted to the City of Wichita, Kansas, except however, that Lot 1 shall have access to 21st St. North at two locations, said locations to be determined by the City Engineer.

W. Dean Lemmon

State of Kansas } S.S. The foregoing instrument was acknowledged before me this 15<sup>th</sup> day of DECEMBER, 1983, by W. Dean Lemmon, a single man.

W. Dean Lemmon Notary Public  
 My Commission Expires \_\_\_\_\_