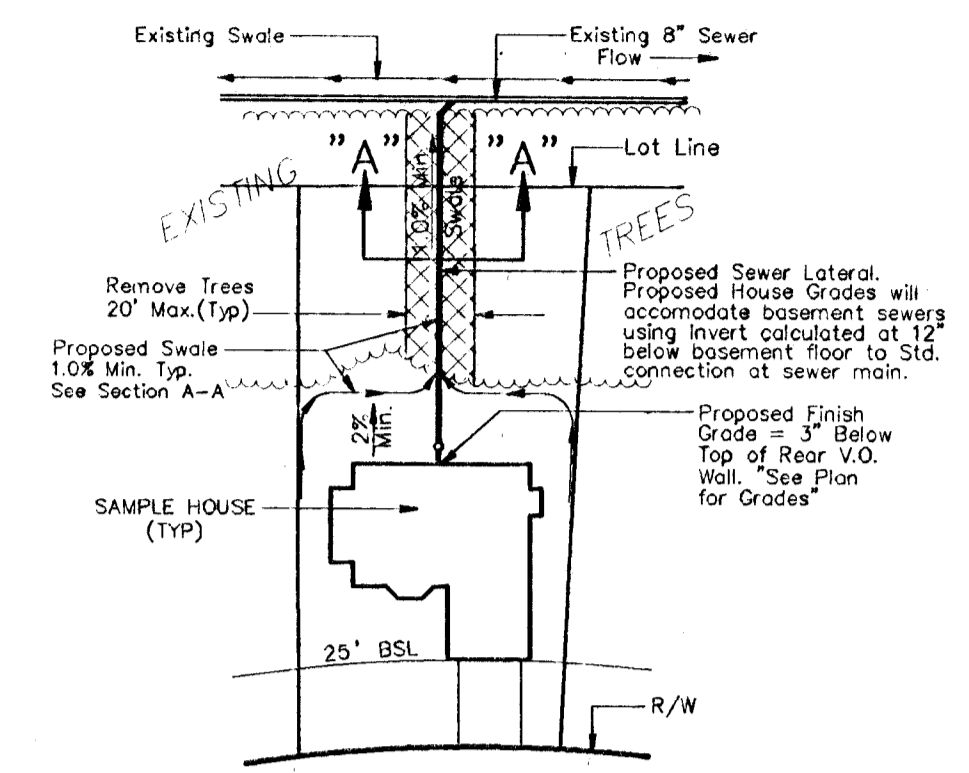
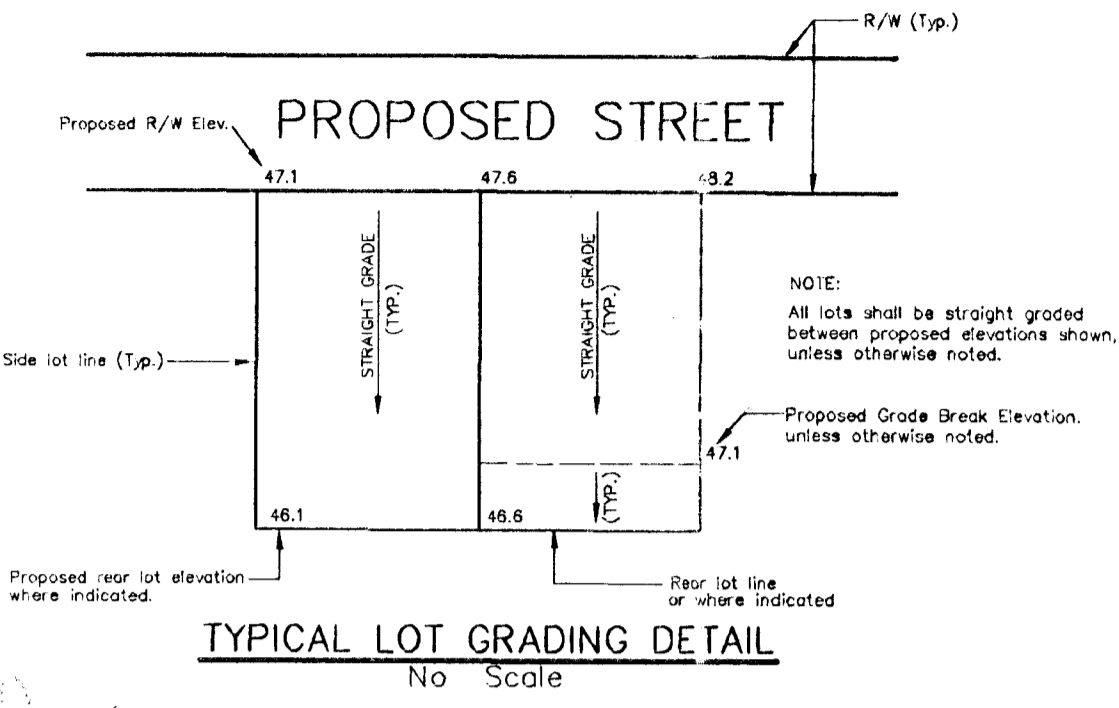
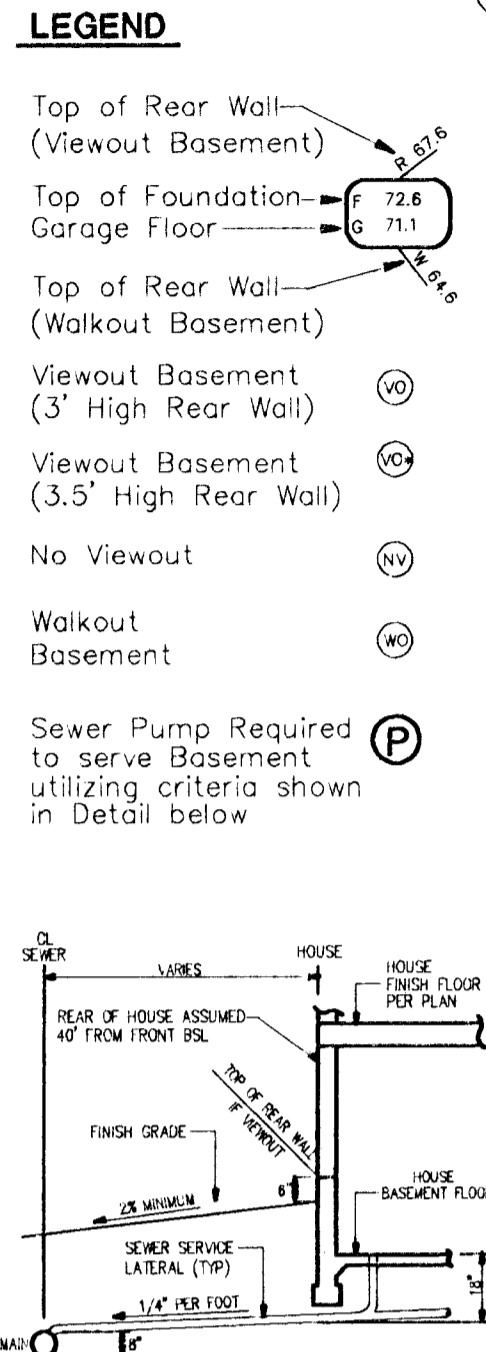


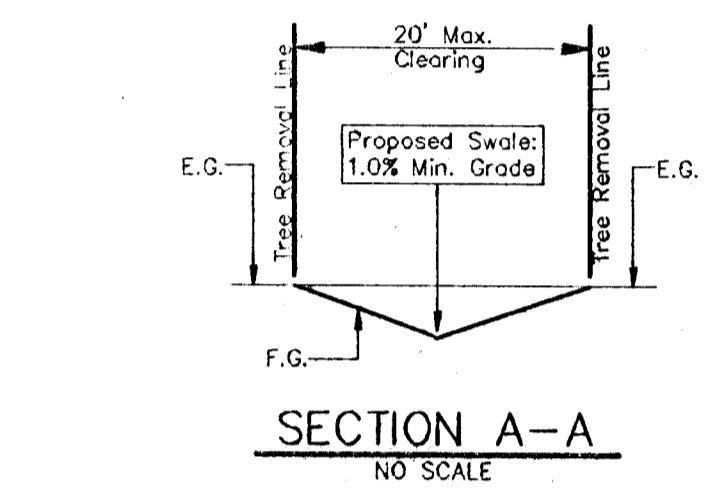
# LOT GRADING PLAN BRADFORD NORTH

AN ADDITION TO WICHITA, SEDGWICK COUNTY, KANSAS

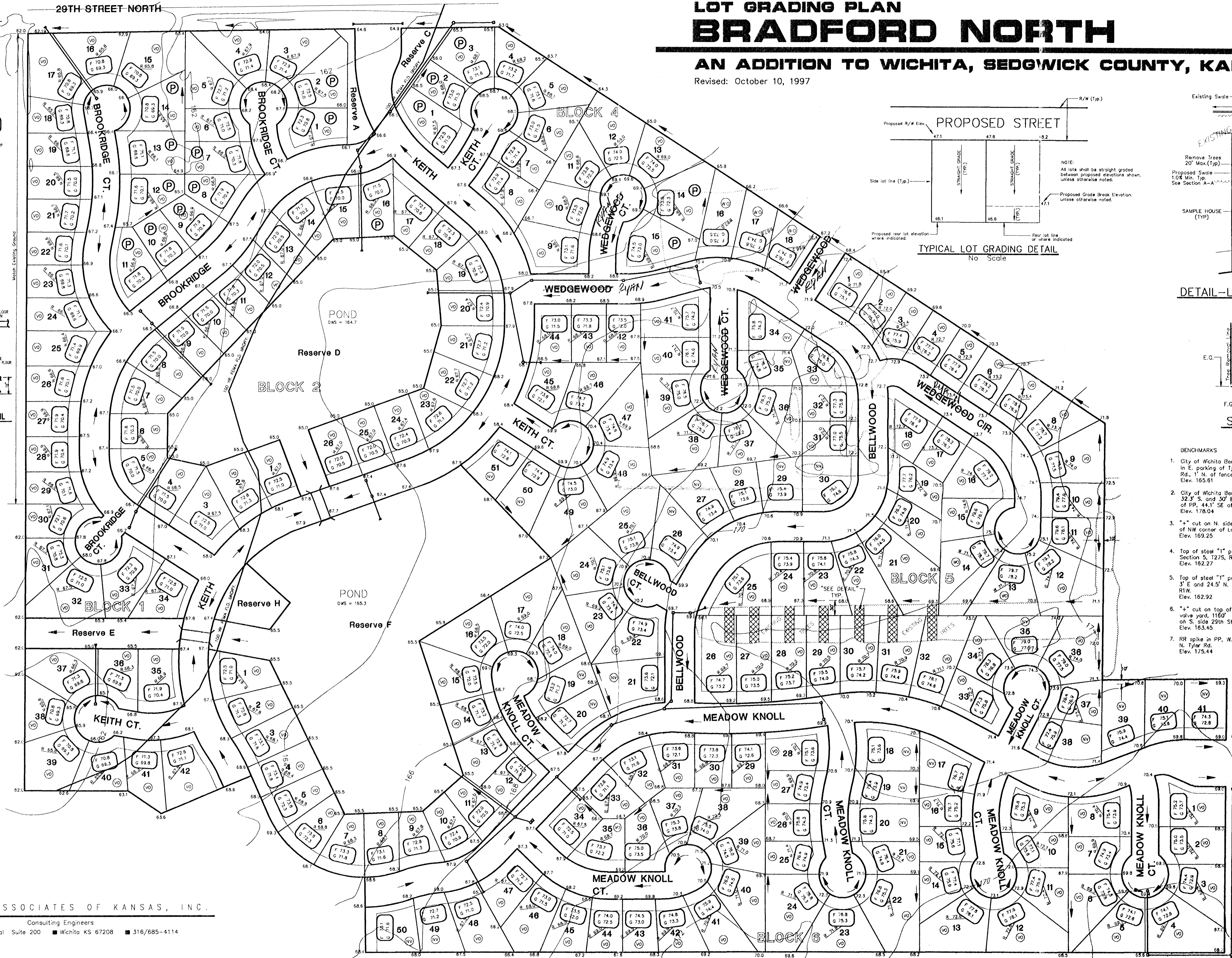
Revised: October 10, 1997



DETAIL-LOTS 26-32, BLOCK 5  
NO SCALE



- BENCHMARKS**
- City of Wichita Benchmark disc @ Tyler Rd. and 25th St. N. in E. parking of Tyler Rd., 6.3' W. of Iron on E. R/W of Tyler Rd., 1' N. of fence corner E. & S. (from Dean Krug C.O.W.) Elev. 165.61
  - City of Wichita Benchmark disc @ Tyler Rd. and 29th St. N., 32.3' S. and 30' E. of centerline both, 55.5' E. of PP, 9.2' SE of PP, 44.1' SE of section corner. (from Dean Krug C.O.W.) Elev. 178.04
  - "\*" cut on N. side of M4 ring. Manhole is 13' S. & 5' E. of NW corner of Lot 23 Block 1, Sterling Farms 2nd Addition. Elev. 169.25
  - Top of steel "T" post set 1' below ground, 10' N of center Section 5, 1275, R1W Elev. 162.27
  - Top of steel "T" post set 6" below ground, 2' E of N-S fence 3' E and 24.5' N. of W 1/16 Corner of NE Cor. Sec. 5, 1275, R1W. Elev. 162.92
  - "\*" cut on top of conc. headwall at entrance to gas line valve yard, 1160' E. of N 1/4 Cor. Sec. 5, 1275, R1W, on S. side 29th St. N. Elev. 163.45
  - RR spike in PP, W. side Tyler Rd., on N. side entrance to 2759 N. Tyler Rd. Elev. 175.44



Scale: 1" = 100'

POE & ASSOCIATES OF KANSAS, INC.  
Consulting Engineers  
5940 E. Central Suite 200 ■ Wichita KS 67208 ■ 316/685-4114

10-22-97