

Preliminary Plat

RIO VISTA ESTATES 3rd ADDITION

Scale: 1"=100'

September 18, 1980 - Revised Jan. 28, 1991

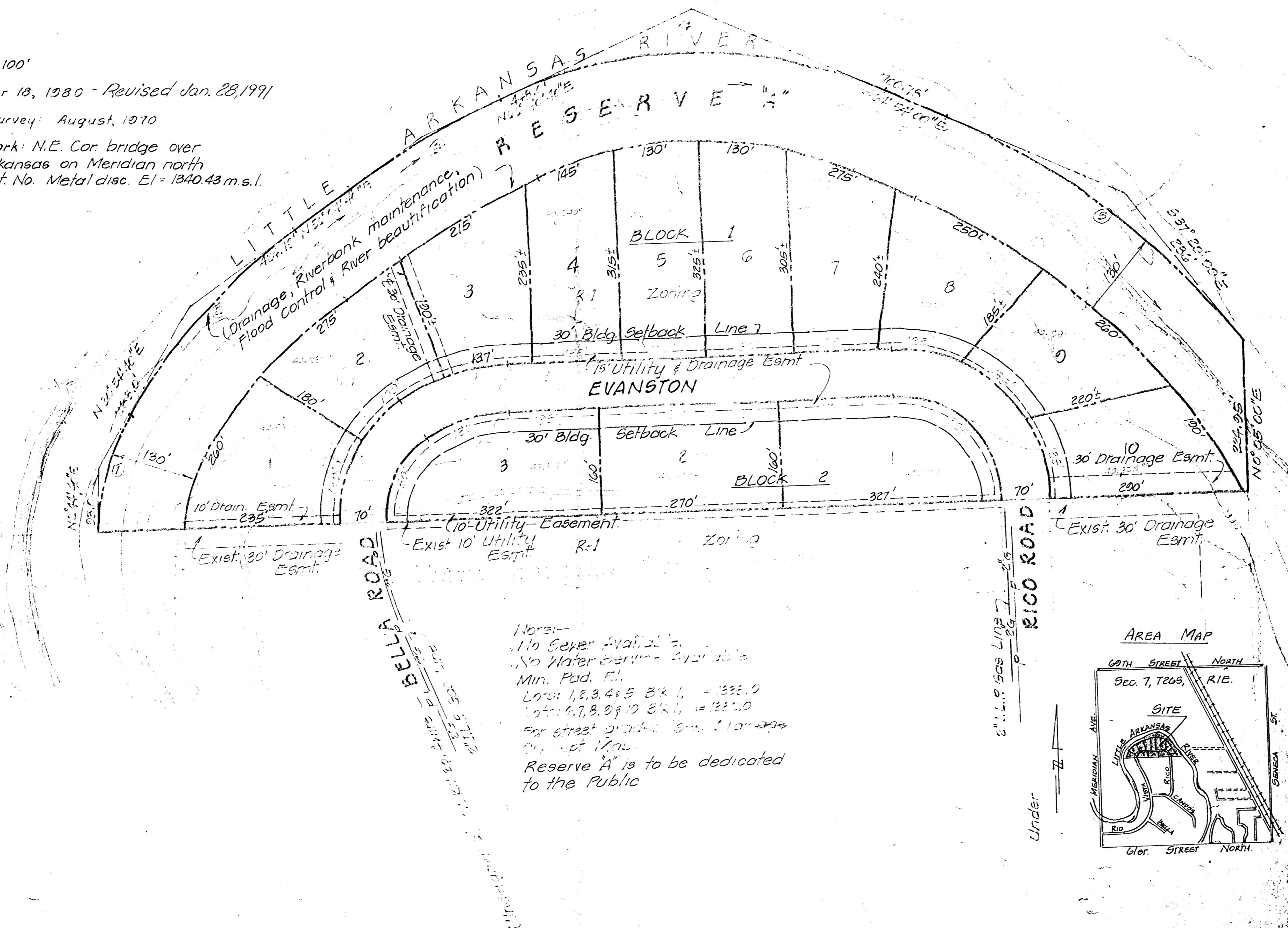
Date of Survey: August, 1970

Bench Mark: N.E. Cor bridge over
Little Arkansas on Meridian north
of 61st St. No. Metal disc. E1=1340.43 m.s.l.

Engineer:
Professional Engineering
Consultants, P.A.
363 E. 75th St.
Wichita, Kansas 67202
Owner: J. E. Rexroot.
Rd. Box 215
Valley Center, Ks. 67147

Flood Control Alignment
& Little Arkansas River

No.	R.	A.	T.	L.
1	376.71'	281'00"	23'	162.24'
2	454.17'	351'00"	120'	375.67'
3	460.00'	475'00"	120'	325.25'
4	700.00'	451'00"	212'	553.23'
5	1125.00'	475'00"	264'	810.00'



Notes:-
1. No Sewer Available.
2. No Water Service Available.
Min. Pad. 50'.
Lots 1, 2, 3, 4 & 5 8' x 11' = 1332.0
Lots 6, 7, 8, 9 & 10 8' x 12' = 1332.0
For street grants, see plat map.
Reserve 'A' is to be dedicated
to the Public

