

Drainage Concept May, 1981

RIO VISTA ESTATES 3rd ADDITION

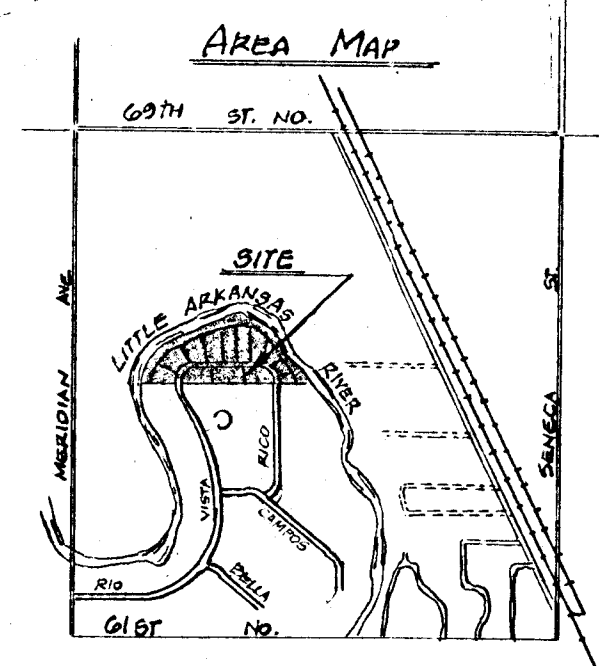
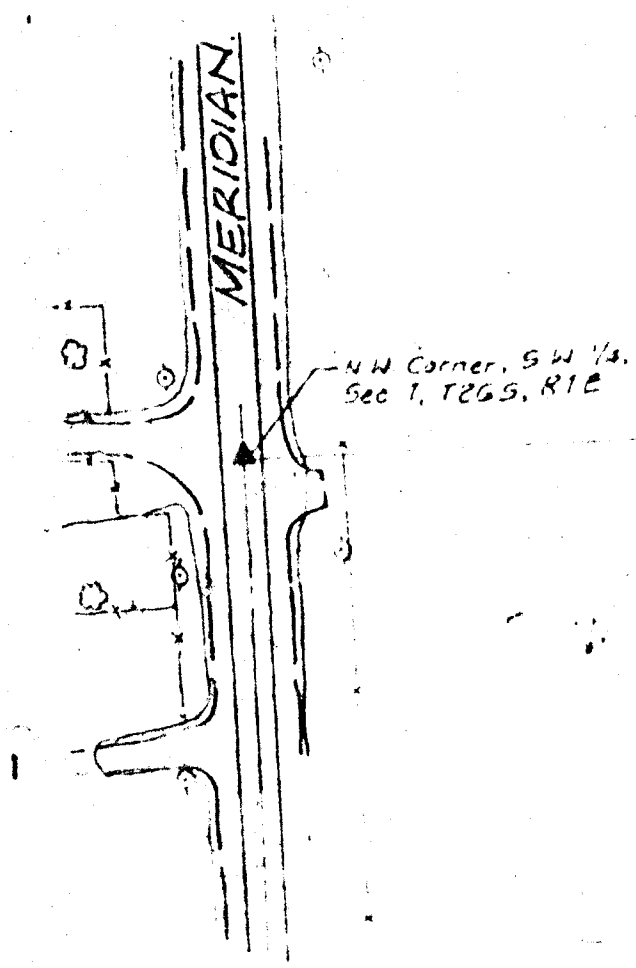
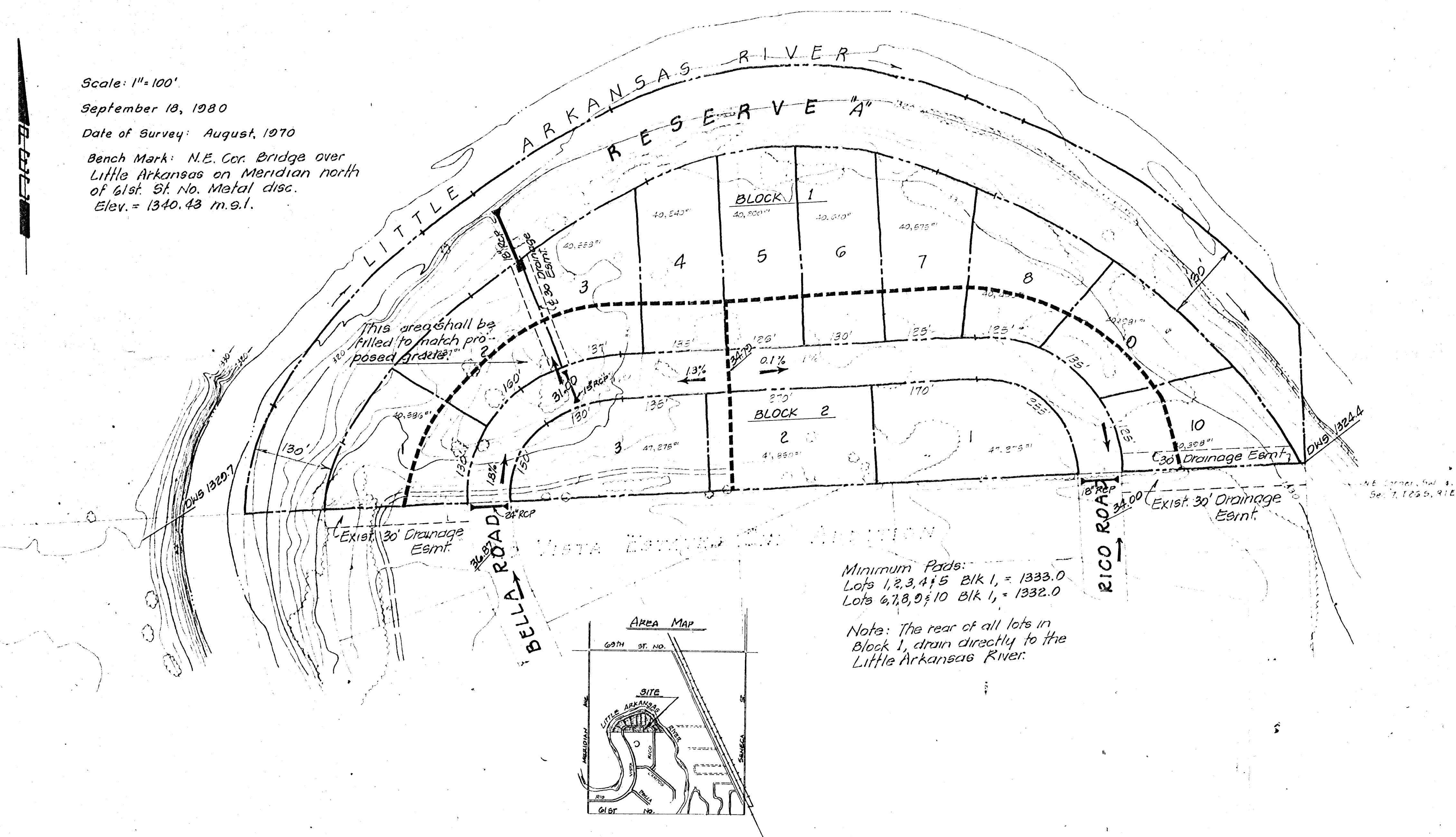
Scale: 1"=100'

September 18, 1980

Date of Survey: August, 1970

Bench Mark: N.E. Cor. Bridge over Little Arkansas on Meridian north of 61st St. No. Metal disc. Elev. = 1340.43 m.s.l.

Engineer:
Professional Engineering Consultants, P.A.
1440 E. English
Wichita, Kansas 67211



Minimum Pads:
 Lots 1, 2, 3, 4, 5 Blk 1, = 1333.0
 Lots 6, 7, 8, 9, 10 Blk 1, = 1332.0

Note: The rear of all lots in Block 1, drain directly to the Little Arkansas River.