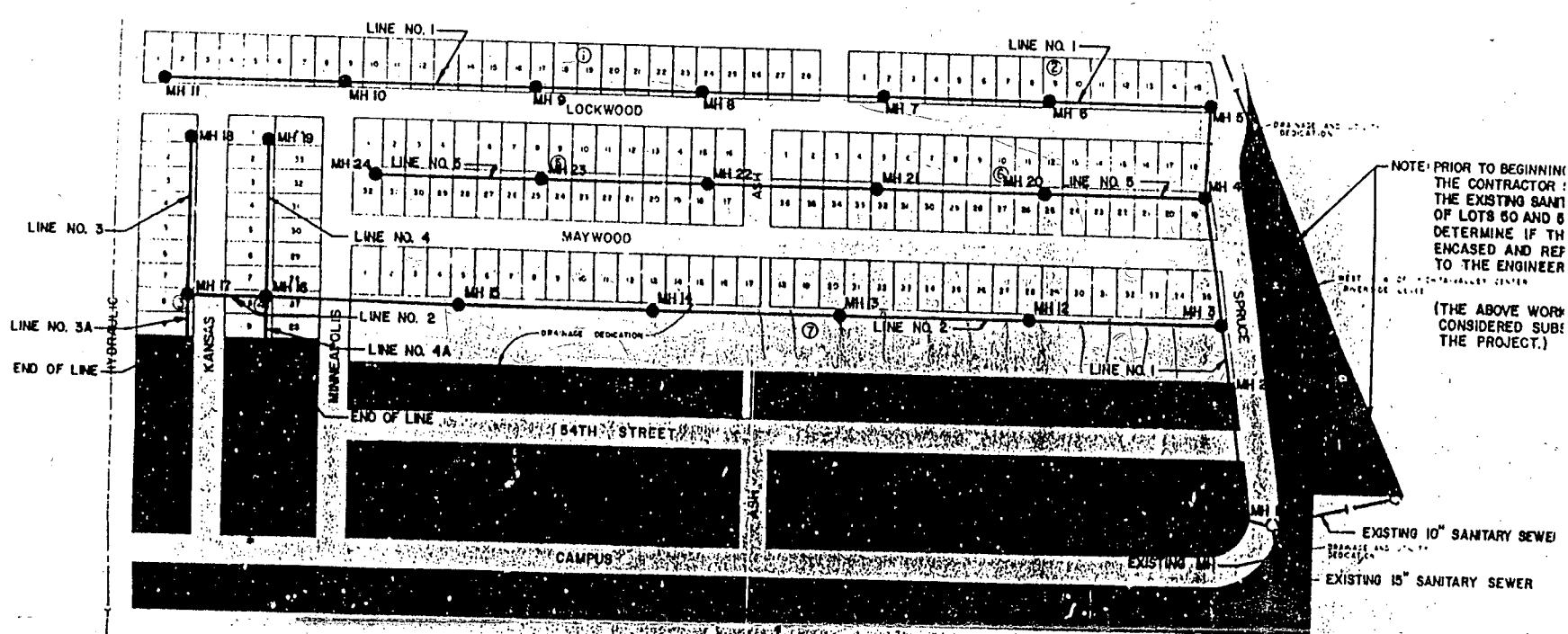


648-7530

SEWER LINE SCHEDULE	
LINE NO.	SHEET NO.
1	4, 5, 8, 6
2	6, 8, 7
3	9
3A	9
4	9
4A	9
5	10, 8, 11

SCALE 1"=200'



SHADED AREAS INDICATE LOTS THAT ARE NOT WITHIN THE BENEFIT DISTRICT

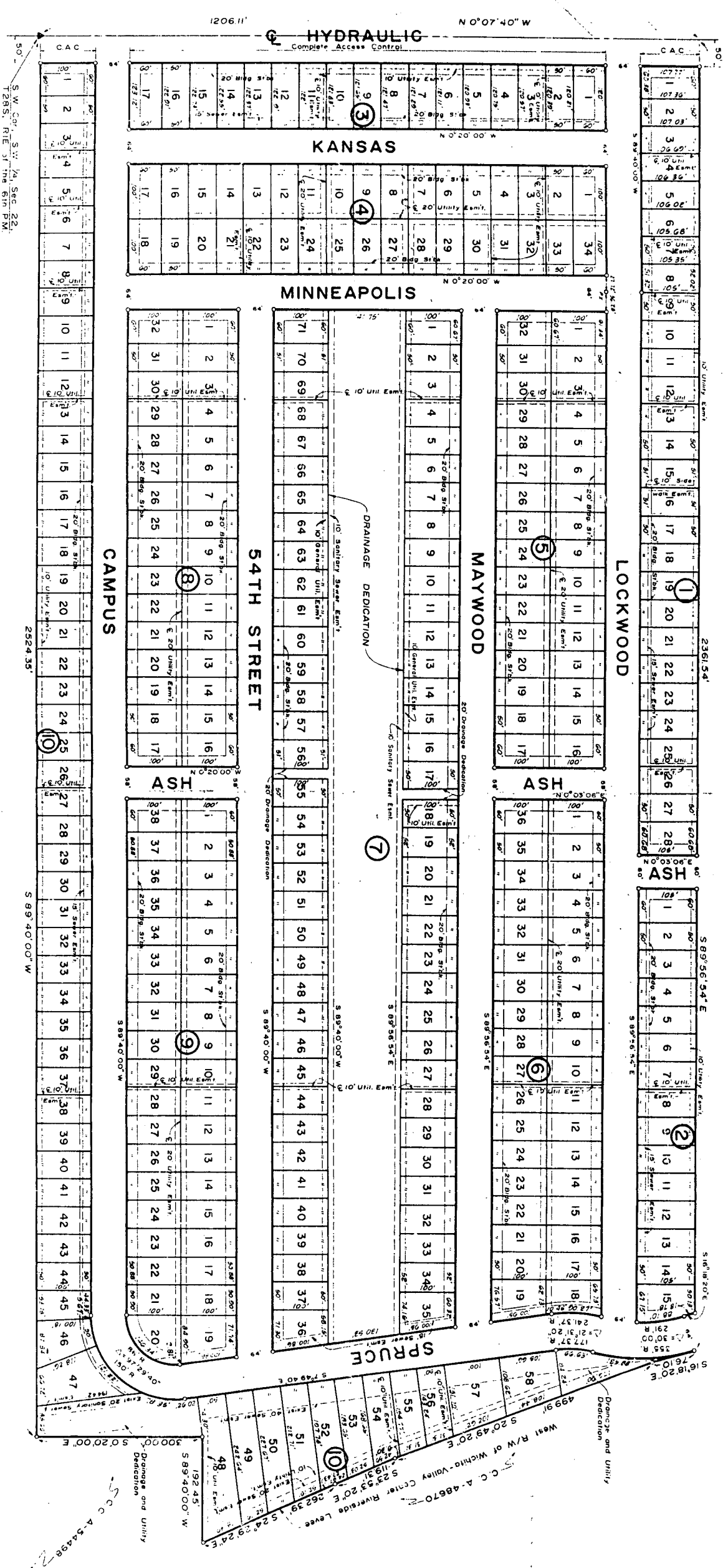
GENERAL NOTES

1. ALL CONSTRUCTION AND MATERIALS TO COMPLY WITH CITY OF WICHITA SPECIFICATIONS AND STANDARDS.
2. SEWER LINES TO BE INSPECTED BY THE DEPARTMENT OF PUBLIC WORKS ENGINEERING DIVISION.
3. AT LEAST 48 HOURS PRIOR TO BEGINNING EXCAVATION (EXCLUDING WEEKENDS AND HOLIDAYS), THE CONTRACTOR SHALL CONTACT THE UTILITY LOCATION SERVICE "KAM-U-DIG-IT" AT (316) 267-2889 TO REQUEST THE FOLLOWING UTILITY COMPANIES TO LOCATE ANY EXISTING LINES WITHIN THE PROJECT AREA: GAS SERVICE COMPANY, K. G. & E., SOUTHWESTERN BELL TELEPHONE COMPANY, AND THE WICHITA WATER DEPARTMENT.
4. EXCESS EXCAVATED MATERIAL AND OTHER DEBRIS SHALL BE WASTED AS DIRECTED BY THE ENGINEER.
5. ALL PROPERTY IRONS DISTURBED BY THE CONTRACTOR SHALL BE RESET AT THE CONTRACTOR'S EXPENSE AS DIRECTED BY THE ENGINEER.
6. THE CONTRACTOR SHALL BE RESPONSIBLE FOR MAINTAINING CONTINUOUS FLOW OF SEWAGE THROUGH THE EXISTING SEWERS DURING CONSTRUCTION. THE CONTRACTOR'S PROPOSED METHOD FOR MAINTAINING SEWAGE FLOW SHALL BE APPROVED BY THE ENGINEER. ANY COST OF MAINTAINING FLOW OF SEWAGE DURING CONSTRUCTION WILL NOT BE PAID FOR DIRECTLY BUT SHALL BE CONSIDERED SUBSIDIARY TO THE OTHER ITEMS OF WORK.
7. ALL ELEVATIONS SHOWN ARE CITY OF WICHITA DATUM. (USGS-1187.4-CITY DATUM)

BENCH MARKS

- CITY OF WICHITA BRASS CAP, 44" WEST AND 30' SOUTH OF INTERSECTION HYDRAULIC AND 55 ST. SOUTH. ELEV. = 76.5'
- CHISELED "C" IN NORTH END OF EAST HEADWALL OF CULVERT IN FLOOD CONTROL LEVEE 2 200' SOUTH OF SOUTH PROPERTY LINE, RIVER OAKS ADDITION. ELEV. = 75.3'

RIVER OAKS ADDITION TO WICHITA, SEDGWICK COUNTY, KANSAS



SCALE: 1" = 40'
DATE: August 23, 1980
K.C. 78-37 City of Wichita, Kansas
and 78-37 Sedgwick County, Kansas
MINIMUM PAD ELEVATIONS
All Lots - 78.50