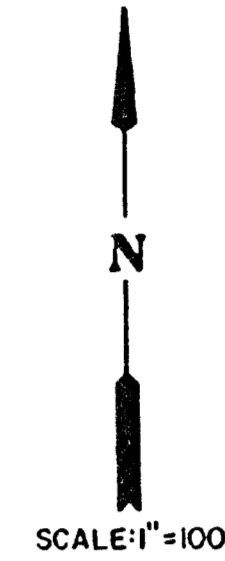
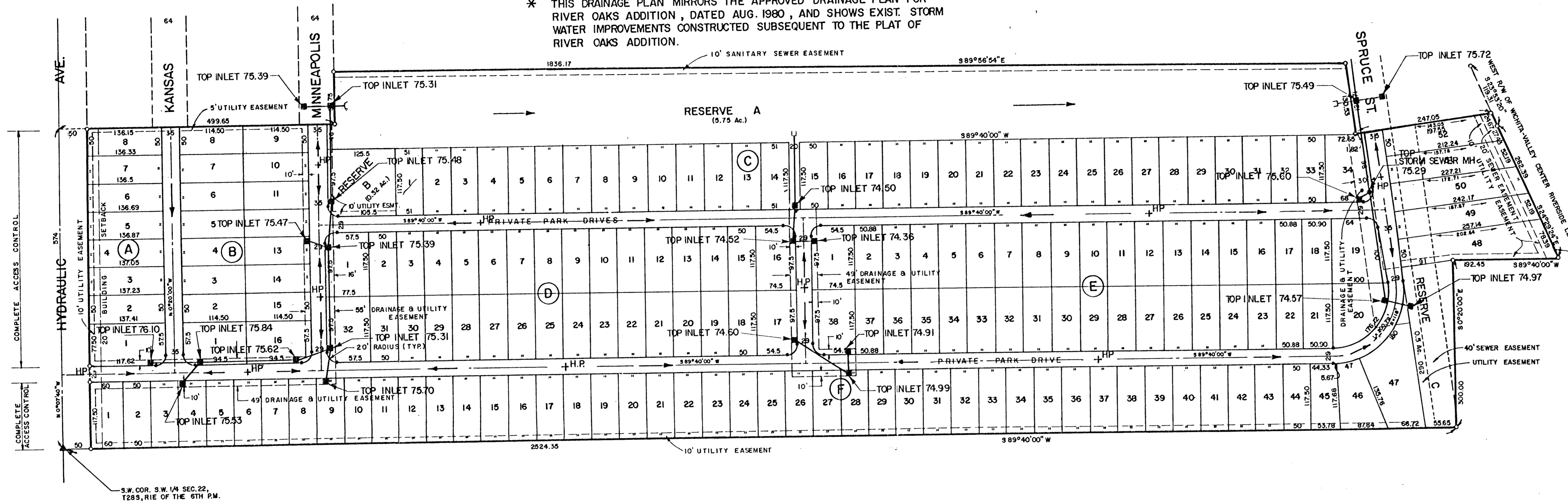


# DRAINAGE PLAN

## RIVER OAKS MOBILE HOME PARK\*

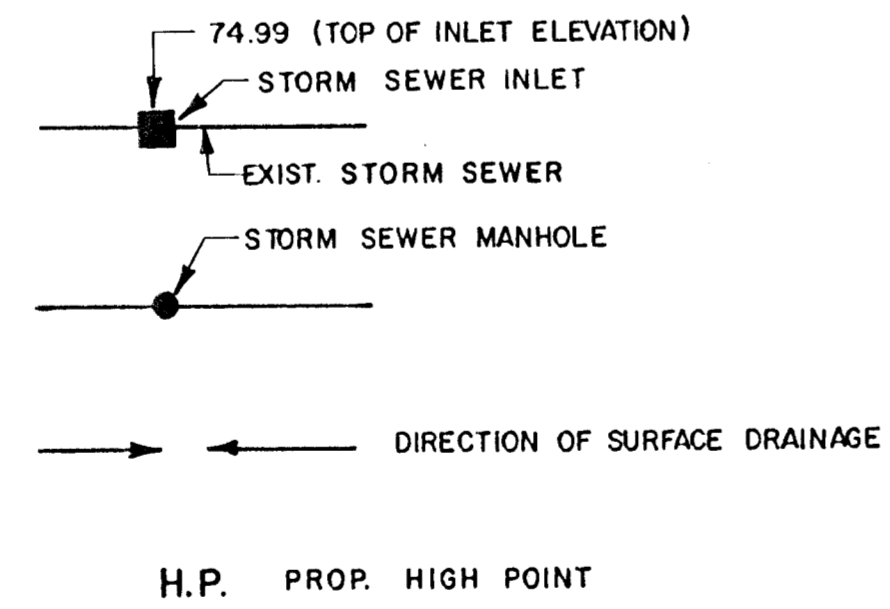
### WICHITA, SEDGWICK CO., KANSAS

\* THIS PLAT IS A REPLAT OF A PORTION OF RIVER OAKS ADDITION,  
 \* THIS DRAINAGE PLAN MIRRORS THE APPROVED DRAINAGE PLAN FOR  
 RIVER OAKS ADDITION, DATED AUG. 1980, AND SHOWS EXIST. STORM  
 WATER IMPROVEMENTS CONSTRUCTED SUBSEQUENT TO THE PLAT OF  
 RIVER OAKS ADDITION.



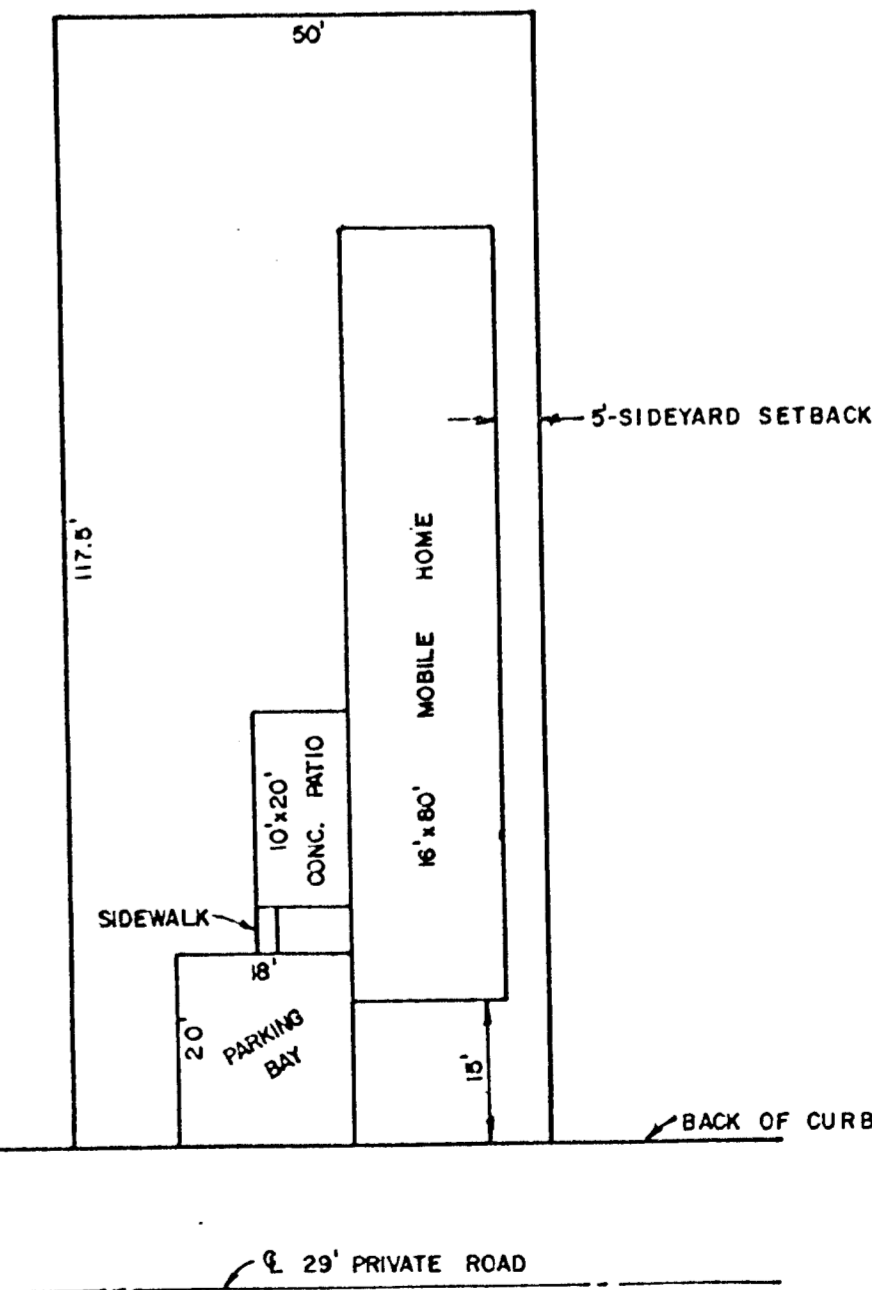
BM = 76.57 CITY BENCH MARK DISK.,  
 44' W. AND 30' S. OF HYDRAULIC B  
 55 TH. ST. SO.

**LEGEND**



**NOTES**

1. PUBLIC SANITARY SEWER IS AVAILABLE IN PUBLIC EASEMENTS. IT WILL BE EXTENDED TO THE SITE AND SHALL BE CONSTRUCTED AND MAINTAINED PRIVATELY.
2. PUBLIC WATER IS AVAILABLE IN PUBLIC STREET R-O-W. IT WILL BE EXTENDED INTO THE PROPERTY WITHIN 10 FOOT EASEMENTS ADJACENT TO THE PRIVATE STREET. EASEMENTS ARE YET TO BE ACQUIRED.
3. PARKING IS ALLOWED ON BOTH SIDES OF THE 35 FOOT WIDE INTERIOR ROADWAYS. PARKING IS PERMITTED ON ONLY ONE (1) SIDE OF THE 29 FOOT WIDE INTERIOR ROADWAYS. THE PARK MANAGER WILL BE RESPONSIBLE FOR POSTING AND ENFORCING THESE RESTRICTIONS.
4. GROSS ACREAGE OF PLAT IS 38.3 ACRES.  
 RESERVE A = 5.75 ACRES RECREATIONAL OPEN SPACE  
 RESERVE B = 0.32 ACRES RECREATIONAL OPEN SPACE  
 RESERVE C = 0.15 ACRES RECREATIONAL OPEN SPACE  
 TOTAL = 6.57 ACRES OR 17% OF RIVER OAKS MOBILE HOME PARK



**REISS & GOODNESS ENGINEERS**  
 2100 WEST 21<sup>ST</sup> STREET  
 WICHITA, KANSAS 67204  
 (316) 832-0213