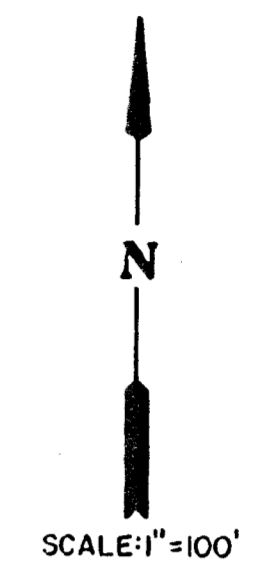
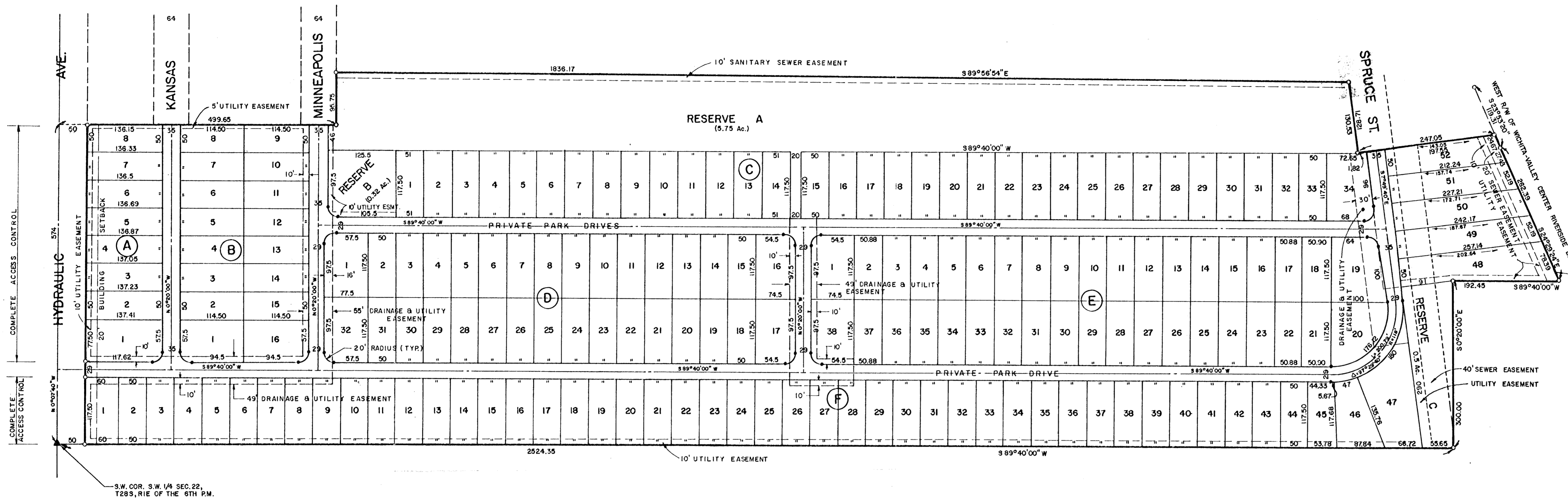


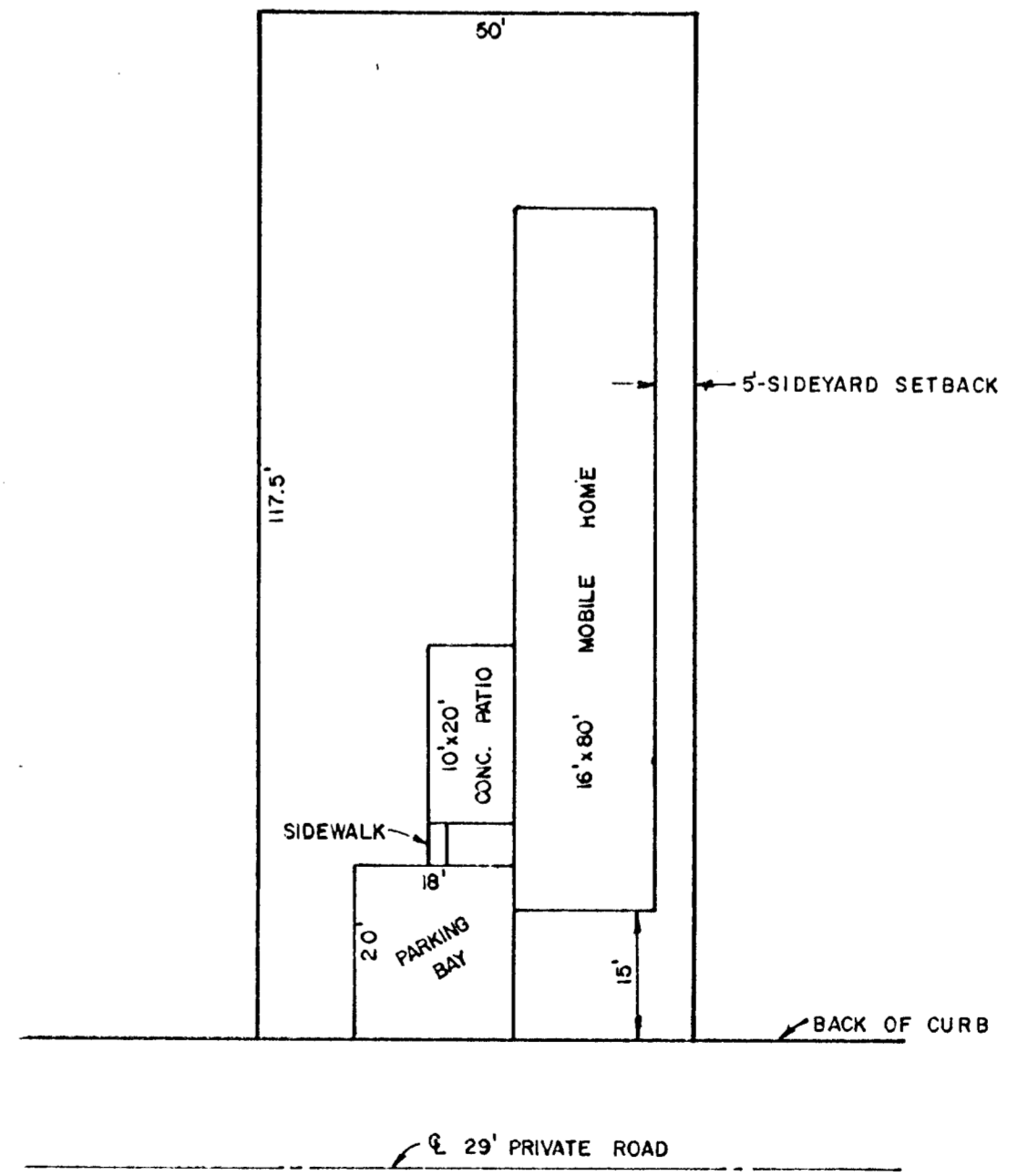
REVISED 10-14-87

PRELIMINARY SITE-DEVELOPMENT RIVER OAKS MOBILE HOME PARK WICHITA, SEDGWICK CO., KANSAS



NOTES

- PUBLIC SANITARY SEWER IS AVAILABLE IN PUBLIC EASEMENTS. IT WILL BE EXTENDED TO THE SITE AND SHALL BE CONSTRUCTED AND MAINTAINED PRIVATELY.
- PUBLIC WATER IS AVAILABLE IN PUBLIC STREET R-O-W. IT WILL BE EXTENDED INTO THE PROPERTY WITHIN 10 FOOT EASEMENTS ADJACENT TO THE PRIVATE STREET. EASEMENTS ARE YET TO BE ACQUIRED.
- PARKING IS ALLOWED ON BOTH SIDES OF THE 35 FOOT WIDE INTERIOR ROADWAYS. PARKING IS PERMITTED ON ONLY ONE (1) SIDE OF THE 29 FOOT WIDE INTERIOR ROADWAYS. THE PARK MANAGER WILL BE RESPONSIBLE FOR POSTING AND ENFORCING THESE RESTRICTIONS.
- GROSS ACREAGE OF PLAT IS 38.3 ACRES.
RESERVE A = 5.75 ACRES RECREATIONAL OPEN SPACE
RESERVE B = 0.32 ACRES RECREATIONAL OPEN SPACE
RESERVE C = 0.5 ACRES RECREATIONAL OPEN SPACE
TOTAL = 6.57 ACRES OR 17% OF RIVER OAKS MOBILE HOME PARK



REISS & GOODNESS ENGINEERS
2160 WEST 21ST STREET
WICHITA, KANSAS 67204
(316) 832-0213

MAY 1987

TYPICAL SITE LAYOUT
SCALE: 1" = 20'