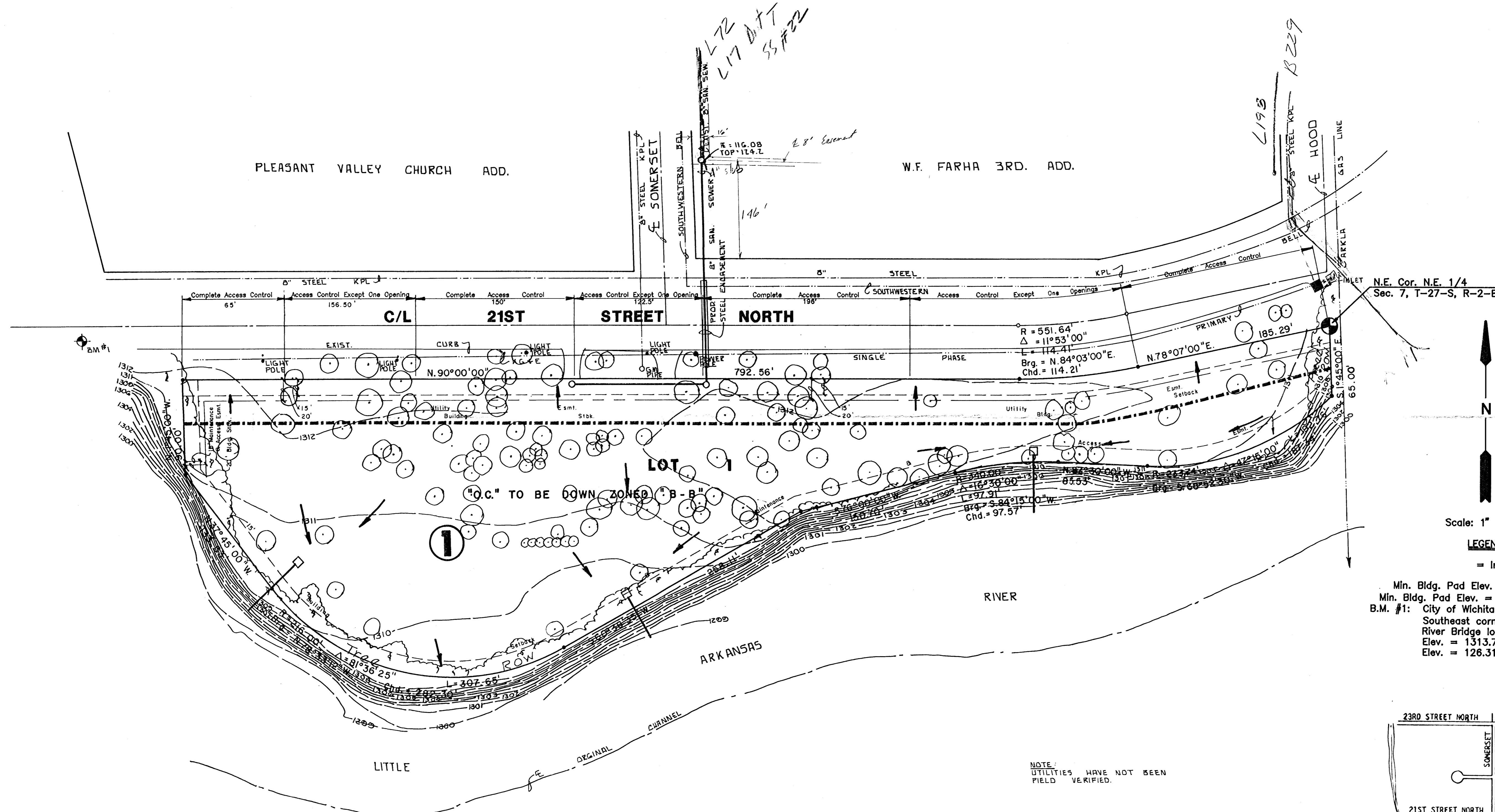


L 72
L 198
B 229

DRAINAGE + UTILITY CONCEPT
FOR

RIVERMILL MEDICAL ADDITION

AN ADDITION TO WICHITA, SEDGWICK COUNTY, KANSAS



N.E. Cor. N.E. 1/4
Sec. 7, T-27-S, R-2-E



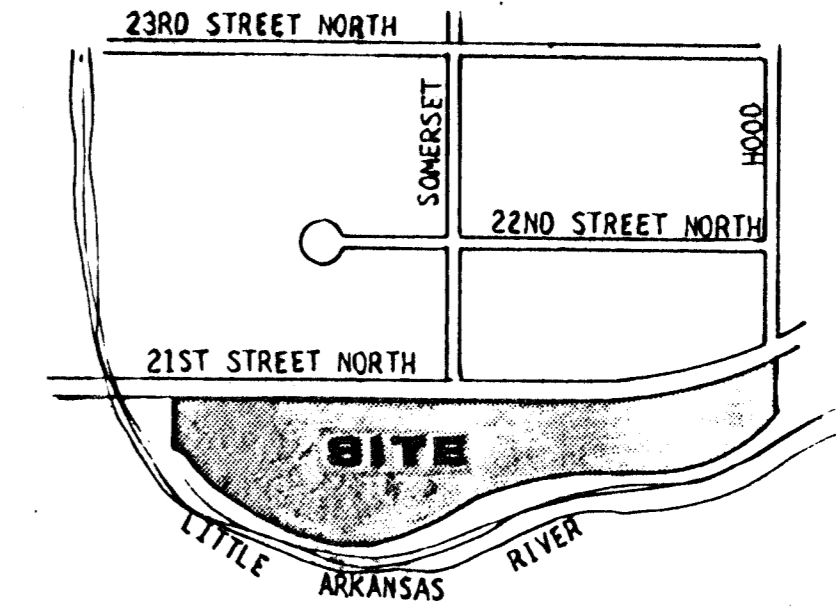
Scale: 1" = 50'

LEGEND

= Iron

Min. Bldg. Pad Elev. = 1305.00 MSL
Min. Bldg. Pad Elev. = 117.60 City Datum
B.M. #1: City of Wichita Bench Mark Disc on
Southeast corner of the Little Arkansas
River Bridge located on 21st Street North
Elev. = 1313.71 MSL
Elev. = 126.31 City Datum

NOTE:
UTILITIES HAVE NOT BEEN
FIELD VERIFIED.



LOCATION MAP

MK
MID-KANSAS ENGINEERING CONSULTANTS PA
3500 NORTH ROCK ROAD
WICHITA, KANSAS 67220 636-5566

OWNER: UNIVERSAL MOTER FUELS, INC.
2824 N. OHIO
WICHITA, KANSAS 67219

SUBDIVIDER: TYRONE D. ARTZ, M.D.
1125 N. TOPEKA
WICHITA, KANSAS 67214