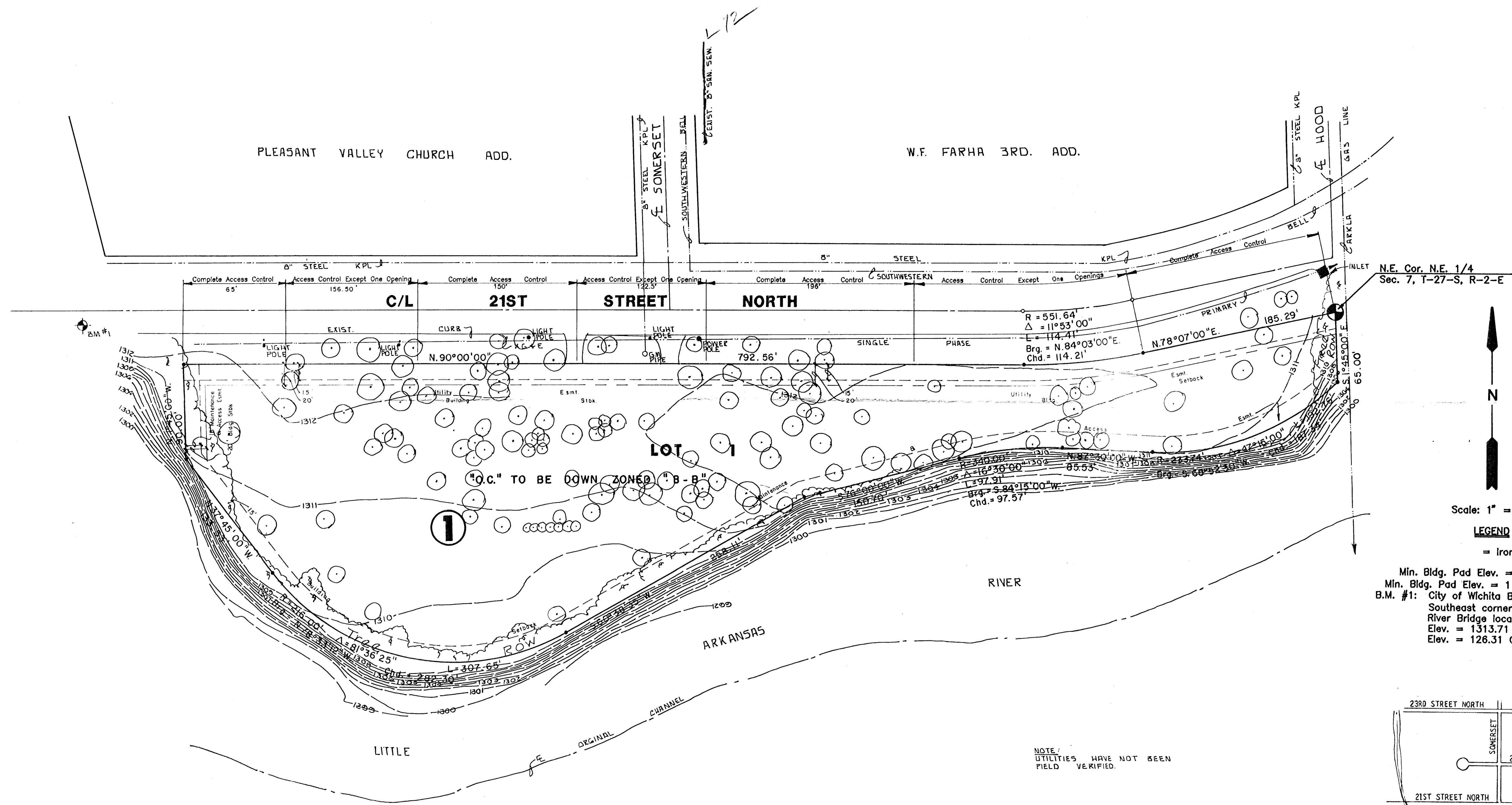
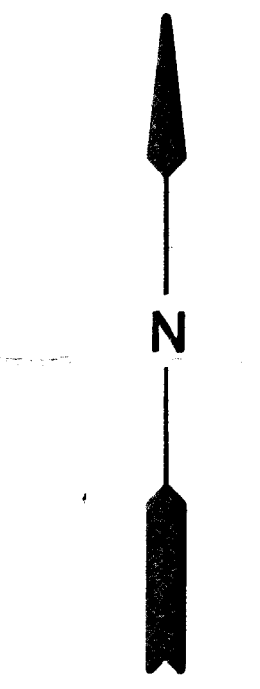


PRELIMINARY PLAT OF  
**RIVERMILL MEDICAL ADDITION**

AN ADDITION TO WICHITA, SEDGWICK COUNTY, KANSAS



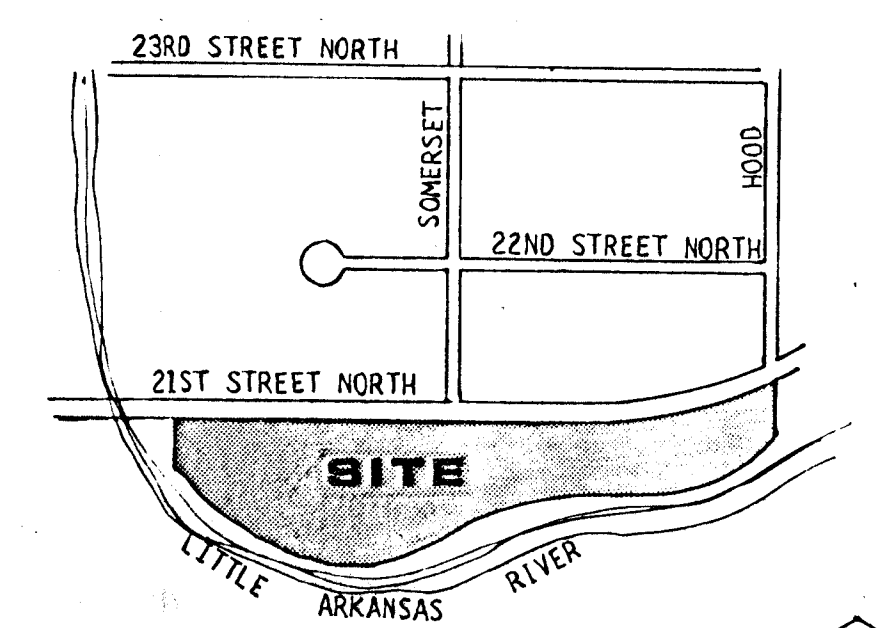
N.E. Cor. N.E. 1/4  
 Sec. 7, T-27-S, R-2-E



Scale: 1" = 50'

**LEGEND**

- = Iron
- Min. Bldg. Pad Elev. = 1305.00 MSL
- Min. Bldg. Pad Elev. = 117.60 City Datum
- B.M. #1: City of Wichita Bench Mark Disc on Southeast corner of the Little Arkansas River Bridge located on 21st Street North
- Elev. = 1313.71 MSL
- Elev. = 126.31 City Datum



**LOCATION MAP**

OWNER: UNIVERSAL MOTER FULES, INC.  
 2824 N. OHIO  
 WICHITA, KANSAS 67219

SUBDIVIDER: TYRONE D. ARTZ, M.D.  
 1125 N. TOPEKA  
 WICHITA, KANSAS 67214

MID-KANSAS ENGINEERING CONSULTANTS PA  
 3500 NORTH ROCK ROAD  
 BUILDING #800  
 WICHITA, KANSAS 67226      638-5568