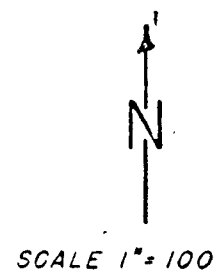


EXHIBIT "B"

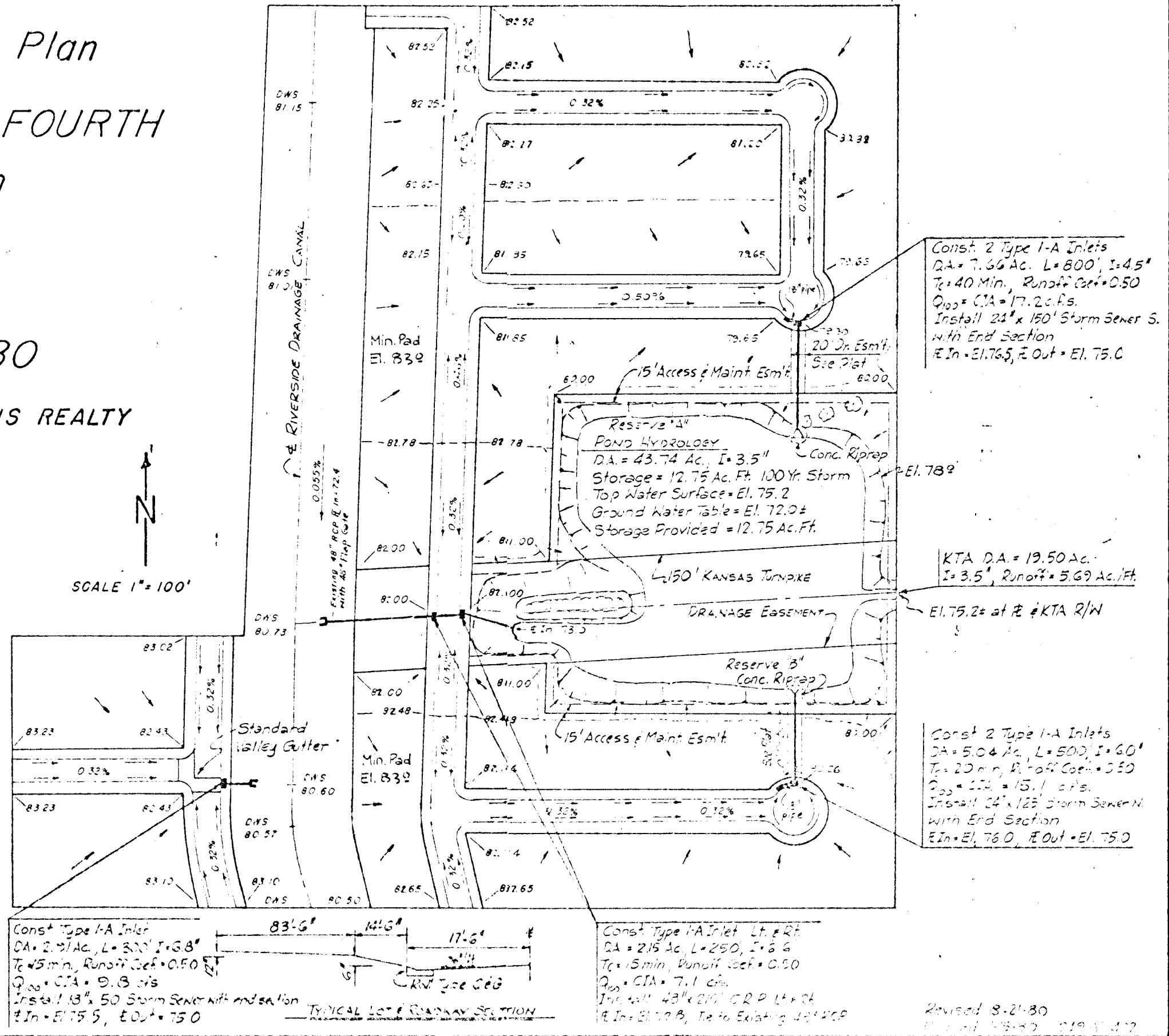
Drainage Plan RIVERSIDE FOURTH Addition

May, 1980

OWNER - ROBBINS REALTY



NOTE:
All lots, as platted in Riverside Fourth Addition, shall be graded to drain to streets except as indicated on this Drainage Plan.
See plat of Riverside Fourth Addition for dimensions and angles.



Const. 2 Type I-A Inlets
DA = 7.66 Ac. L = 800' I = 4.5"
T = 40 Min. Runoff Coef = 0.50
Q₁₀₀ = CIA = 17.20 cfs.
Install 24" x 150' Storm Sewer S.
with End Section
E In = El. 76.5, E Out = El. 75.0

POND HYDROLOGY
DA = 43.74 Ac. I = 3.5"
Storage = 12.75 Ac. Ft. 100 Yr. Storm
Top Water Surface = El. 75.2
Ground Water Table = El. 72.0 ±
Storage Provided = 12.75 Ac. Ft.

KTA DA = 19.50 Ac.
I = 3.5", Runoff = 5.69 Ac./Ft.
El. 75.2 ± at #2 & KTA R/W

Const. 2 Type I-A Inlets
DA = 5.04 Ac. L = 500' I = 6.0"
T = 20 Min. Runoff Coef = 0.50
Q₁₀₀ = CIA = 15.11 cfs.
Install 24" x 125' Storm Sewer N.
with End Section
E In = El. 76.0, E Out = El. 75.0

Const. Type I-A Inlet L = 80'
DA = 2.71 Ac. L = 300' I = 3.8"
T = 45 Min. Runoff Coef = 0.50
Q₁₀₀ = CIA = 9.13 cfs.
Install 18" x 50' Storm Sewer with end section
E In = El. 75.5, E Out = 75.0

TYPICAL LOT & DRIVEWAY SECTION

Const. Type I-A Inlet L = 80'
DA = 2.15 Ac. L = 250' I = 5.5"
T = 5 Min. Runoff Coef = 0.50
Q₁₀₀ = CIA = 7.11 cfs.
Install 18" x 25' CRP L = 25'
E In = El. 72.8, E In Existing 48" x 20'

Revised 8-21-80

part of plat B