

SAN. SEWER
M.H. 7+14.3
SOUTH R.O.W. 22ND ST. NORTH
GRD. 122.9
GRADE 116.6
8" V.C.P.

8" V.C.P. MATERIAL LINE
EXTENDS NORTH
FOR SOMERSET.

SAN SEWER
20' NORTH ALONG 5' E
EAST R.O.W. SOMERSET
M.H. 4+65.5
GRD. 124.2
GRADE 115.99
6" STUB

SAN. SEWER
M.H. 5+11.5
GRD. 123.6
GRADE 118.97
4" STUB

PLEASANT VALLEY CHURCH ADDITION
ZONED COMMERCIAL

SECURITY OIL CO.
ZONED COMMERCIAL

N.E. FARHA 3RD ADDITION
ZONED COMMERCIAL

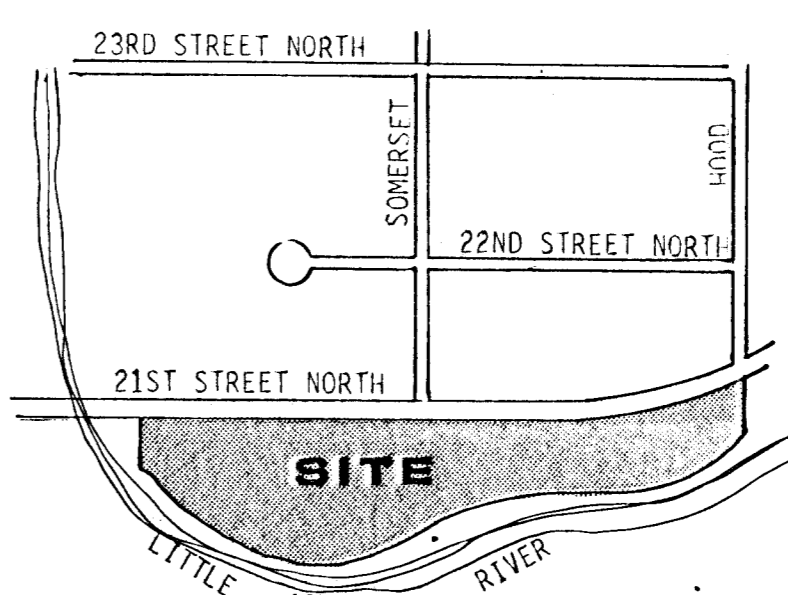
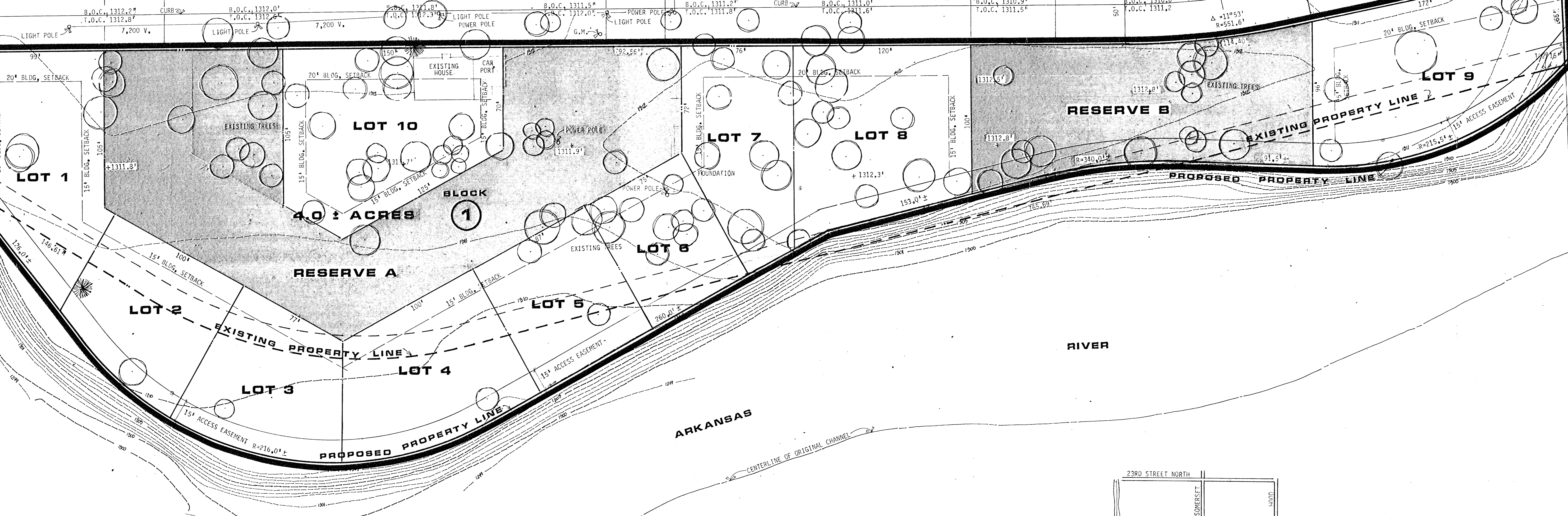
SOMERSET

HOOD

21ST STREET NORTH

STREET NORTH

STREET NORTH



LOCATION MAP

RESERVES "A" AND "B" FOR ACCESS,
PARKING, UTILITIES, LANDSCAPING,
IRRIGATION, WALLS, ENTRY SIGNS,
ENTRANCE STRUCTURES AND DRAINAGE.

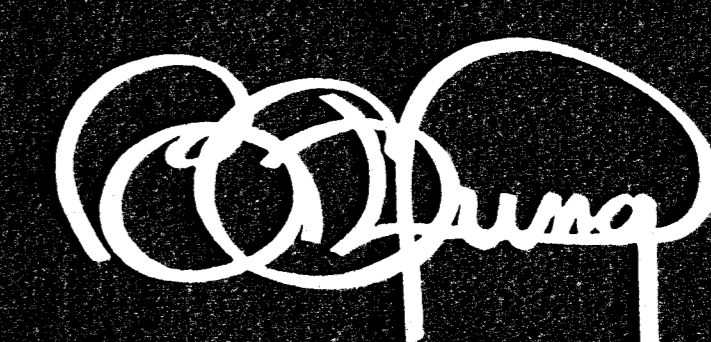
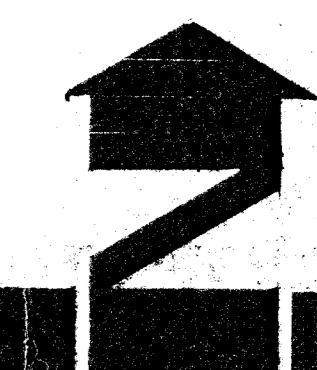
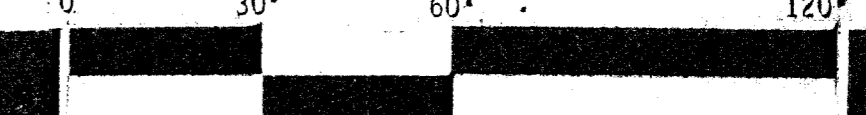
BENCH MARK:
DISC IN SIDEWALK AT N.E. CORNER
OF BRIDGE OVER LITTLE ARKANSAS
RIVER AT 21ST. STREET NORTH
ELEVATION = 1313.71 MEAN SEA LEVEL
1' CONTOUR INTERVAL

PRELIMINARY PLAT RIVERMILL

OWNER: UNIVERSAL MOTOR FUELS CO., INC., 2824 N. OHIO, WICHITA, KS 67219

APRIL 26, 1984

SCALE 1" = 30'



BILL G. YUNG DESIGN
8225 E. 35TH ST. NORTH, WICHITA, KS. 67226 316-683-5567