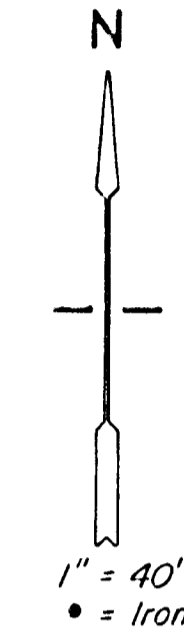
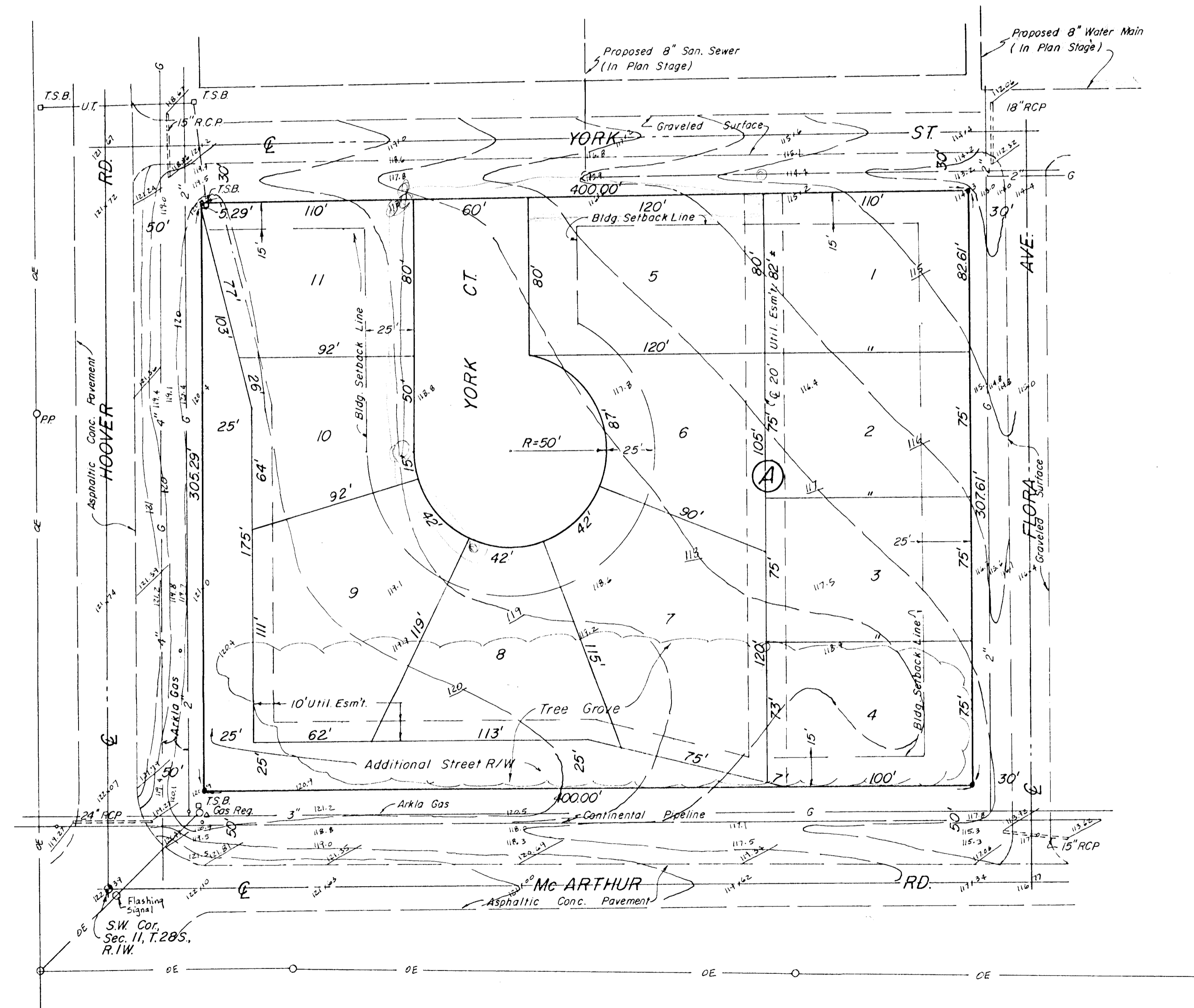


PRELIMINARY PLAT
of
SKYLINE HEIGHTS SECOND ADDITION
To Sedgwick Co., Kansas



Legend -

- O.E. = Overhead Electric
- U.T. = Underground Telephone
- T.S.B. = Telephone Splice Box
- = Spot Elevation
- G = Gas Main

BENCHMARK -

N.E. Cor. Conc. Pad for Telephone Splice Box at N.E. Cor. Hoover & York St. Elev. 120.07 City Datum.

LEGAL DESCRIPTION -

A Replat Of Block "A", Skyline Heights, Sedgwick County, Kansas.

Owner - Mervene H. Goff

Moehring & Associates
Consulting Engineers
Wichita
Sept. 11, 1986

