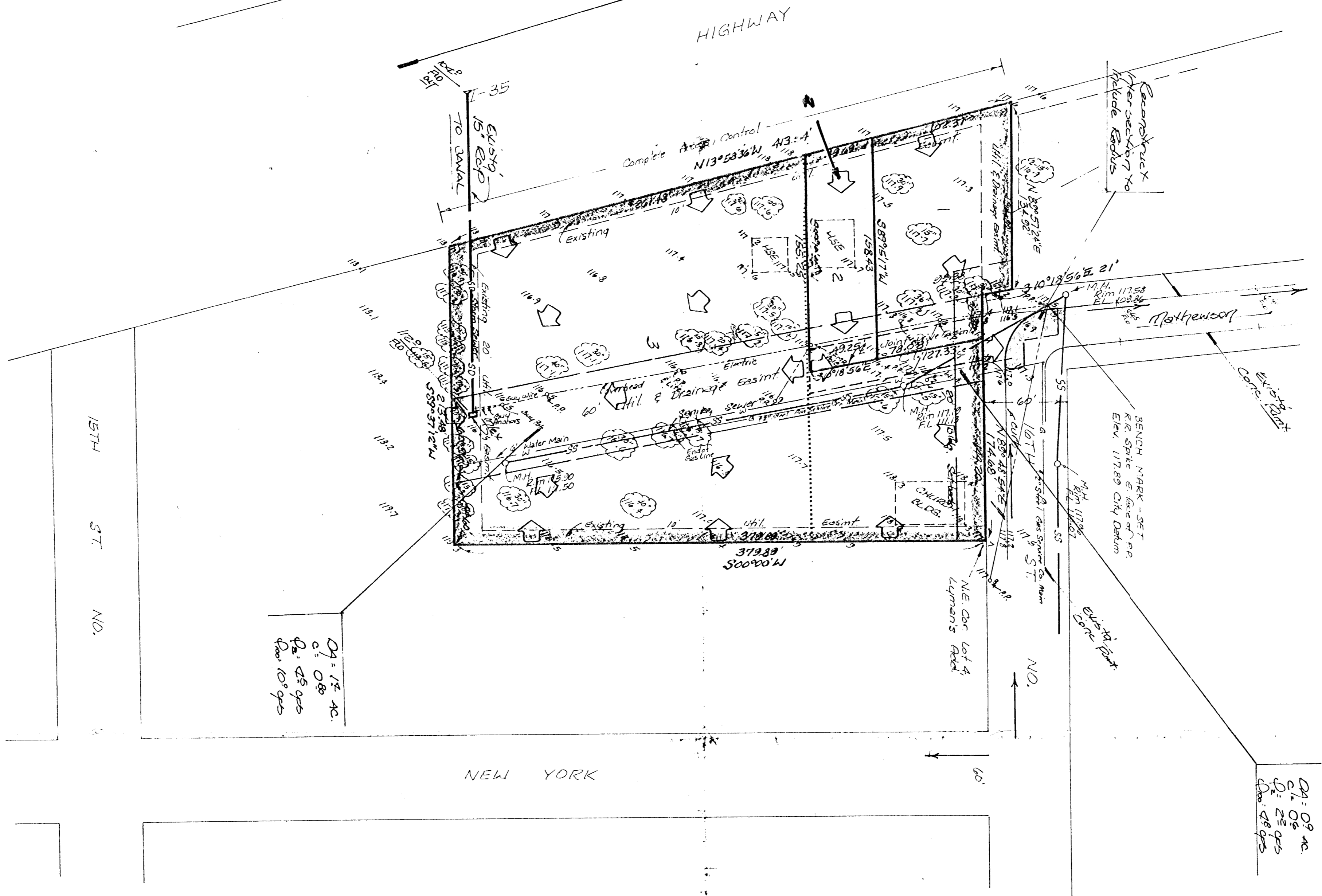


drainage plan

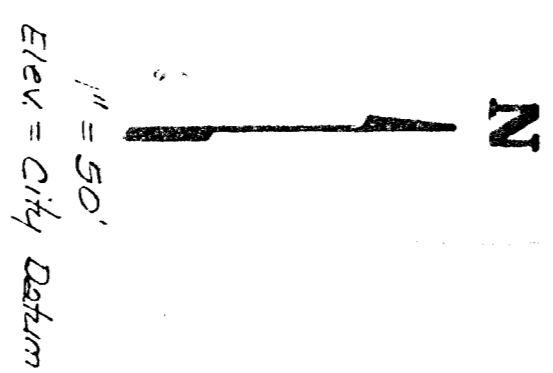
Revised
4-11-83



REVISED
SKETCH
PLAT
J. W. WASHINGTON ADDITION

All of Lots 1, 2, 3, 4 and the south 57.52 feet of Lot 5 and all of Lots 6, 7, 8, 9 and 10 together with all of Washington Ave., lying north of the south line of said lots 1 and 10 and south of the north line of said lot 4, extended west to the east line of said lot 5, Lyman's Addition to the City of Wichita, Sedgwick County, Kansas.

ANTIOCH MISSIONARY BAPTIST CHURCH
Rev ANDOS R. SANDERS, Trustee 67-81



GENCH MARK:
Steel Rod in concrete post 24'E &
26.5' N. of 174' x 16.6' block
Elev = 117.85 City Datum