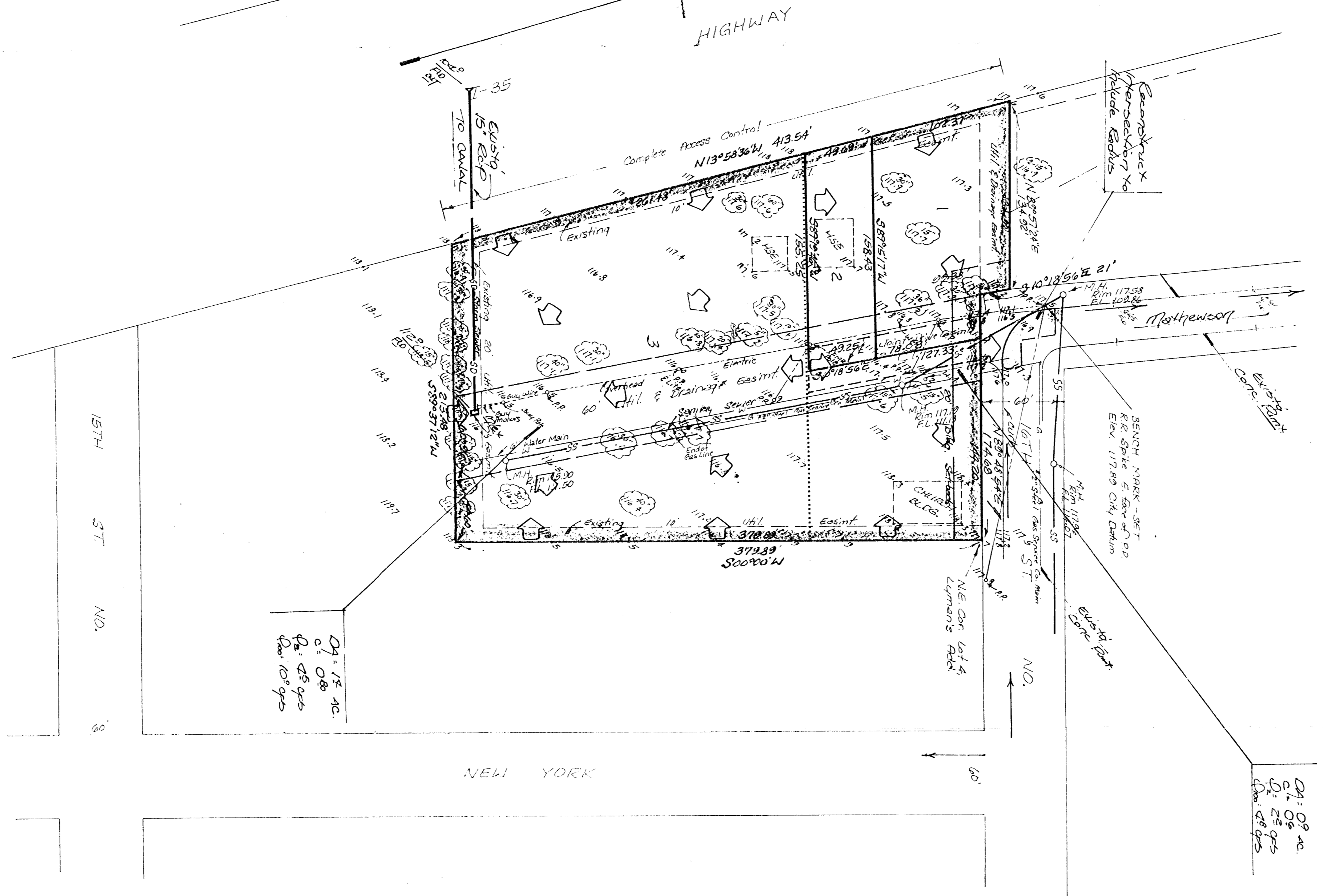


# drainage plan

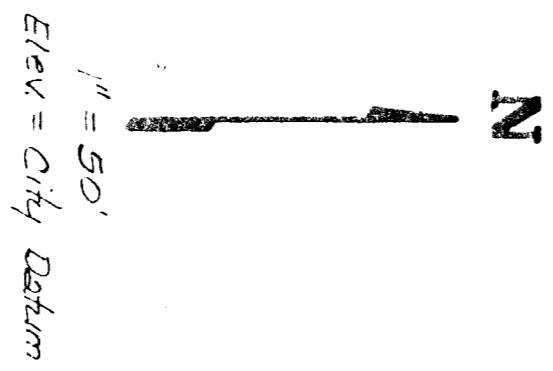
2-23-83



REVISED  
SKETCH  
PLAT  
**J. W. WASHINGTON ADDITION**

Plat of Lots 1, 2, 3, 4 and the south 57.32 feet of Lot 5 and all of Lots 6, 7, 8, 9 and 10 together with all of Robinson Ave., lying north of the south line of said lots 1 and 10 and south of the north line of said lot 4, extended west to the east line of said lot 5, Lyman's Addition to the City of Wichita, Sedgewick County, Kansas.

ANTI-OCH MISSIONARY BAPTIST CHURCH  
Rev. ANDOS R. SANDERS, Trustee ET-AL



BENCH MARK:  
Bench Rod in concrete post 24"E. &  
25.6' N. of E. 17th St. 7th & 1/2' W. of  
Elev = 117.25 City Datum

0.1 ± ac.  
0.1 ± ac.  
0.1 ± ac.  
0.1 ± ac.

0.1 ± ac.  
0.1 ± ac.  
0.1 ± ac.