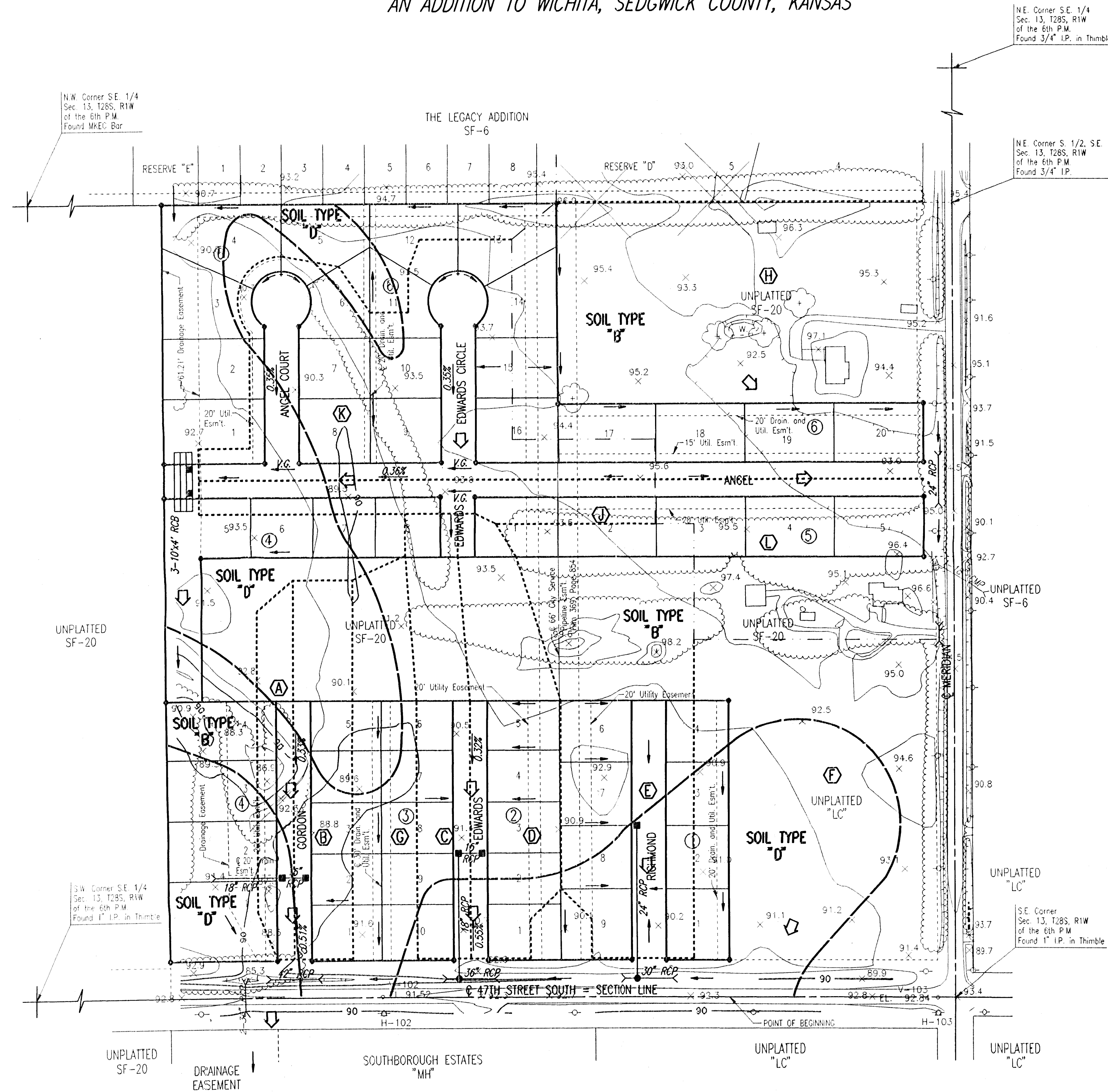


# DRAINAGE PLAN

## ANGEL ACRES

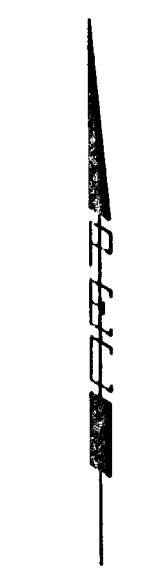
AN ADDITION TO WICHITA, SEDGWICK COUNTY, KANSAS



N.E. Corner S.E. 1/4  
Sec. 13, T28S, R1W  
of the 6th P.M.  
Found 3/4" I.P. in Thimble

N.W. Corner S.E. 1/4  
Sec. 13, T28S, R1W  
of the 6th P.M.  
Found MKED Bar

N.E. Corner S. 1/2, S.E. 1/4  
Sec. 13, T28S, R1W  
of the 6th P.M.  
Found 3/4" I.P.



SCALE: 1"=100'  
● = IRON SET

B.M. - CITY OF WICHITA STANDARD DISC, 44' NORTH AND 30' EAST  
OF THE INTERSECTION OF THE CENTERLINES OF MERIDIAN  
AND 47TH STREET SOUTH.  
ELEV.=91.777 CITY DATUM

### LEGEND

- SOIL GROUP BOUNDARY
- (A) BASIN IDENTIFIER
- - - MINOR BASIN BOUNDARY
- MAJOR BASIN BOUNDARY
- ⇨ MAJOR STORM WATER OVERFLOW (Q100)
- ⇨ MINOR STORM WATER FLOW (Q2)
- STORM SEWER AND INLET
- STORM SEWER AND MANHOLE

STORM WATER TO BE ROUTED  
TO MERIDIAN AND/OR 47TH STREET  
SOUTH VIA DRIVES, FLUMES, STREETS,  
PRIVATE STORM WATER SEWERS OR OTHER  
APPROVED DRAINAGE DEVICES.