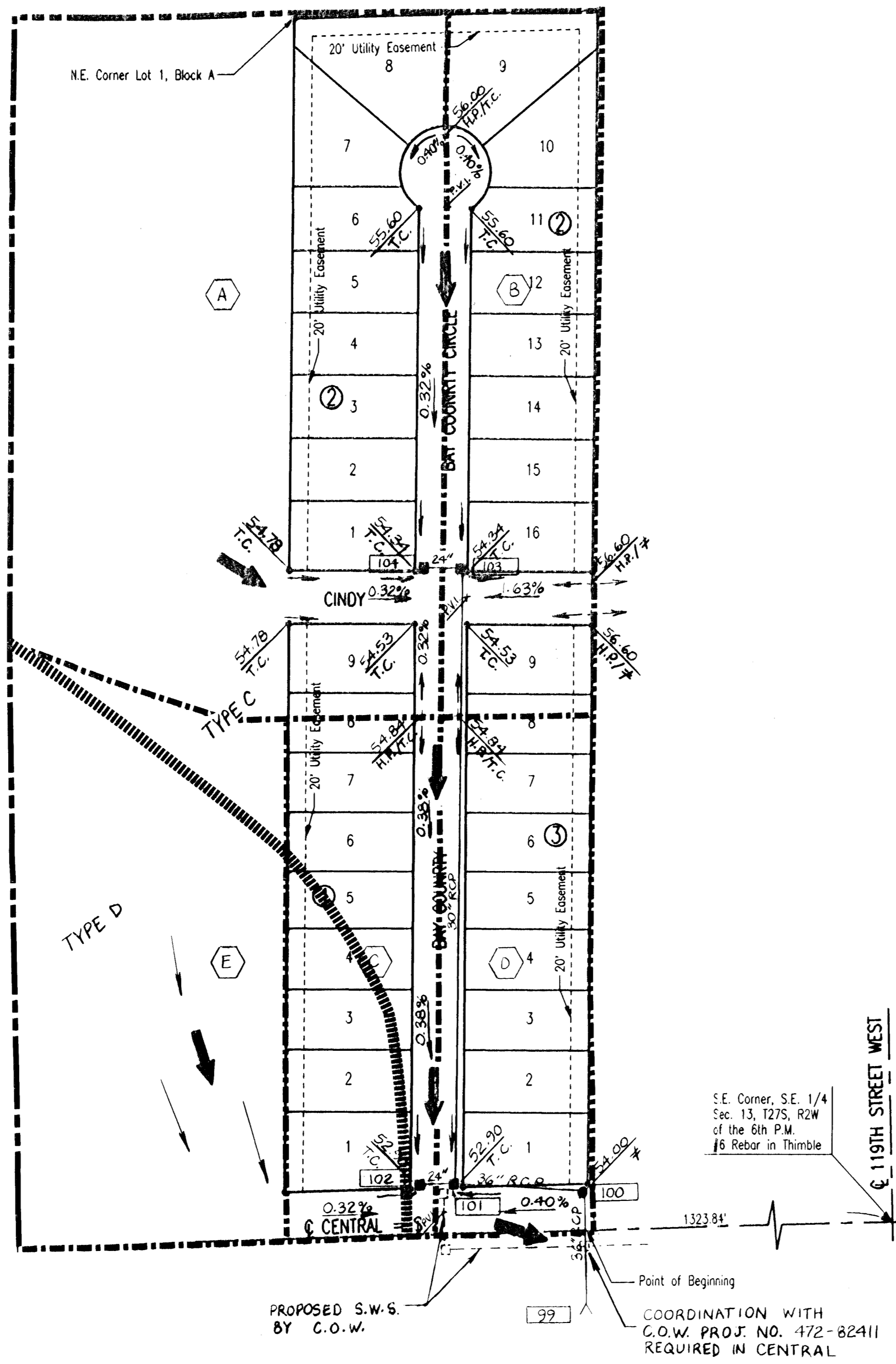


DRAINAGE PLAN  
**COUNTRY MEADOWS WEST ADDITION**  
 TO WICHITA, SEDGWICK COUNTY, KANSAS



SCALE: 1"=100'

• = IRON SET

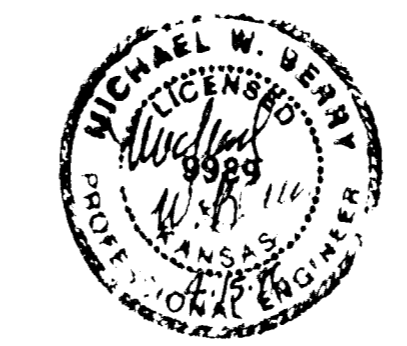
B.S.L. = BUILDING SETBACK LINE  
 (R) = RECORD DIMENSION

B.M. - STANDARD CITY OF WICHITA B.M. DISC 40' EAST AND 46' SOUTH OF THE INTERSECTION OF THE CENTERLINES OF CENTRAL AND 119TH STREET WEST.  
 ELEV.=156.93 CITY DATUM  
 ELEV.=1344.33 M.S.L.

B.M. - CHISELED "D" IN TOP OF CURB, NORTH SIDE HICKORY STREET, 56.5' EAST OF C. 119TH STREET WEST.  
 ELEV.=158.97 CITY DATUM  
 ELEV.=1346.37 M.S.L.

- LEGEND**
- MAJOR BASIN BOUNDARY
  - MINOR BASIN BOUNDARY
  - SOIL GROUP BOUNDARY
  - MINOR STORM FLOW
  - MAJOR STORM FLOW
  - PROPOSED STORM SEWER & INLET
  - PROPOSED STORM SEWER & MANHOLE
  - A DRAINAGE BASIN IDENTIFIER
  - 101 NODE IDENTIFIER
  - T.C. TOP OF CURB ELEVATION
  - H.P. HIGH POINT
  - ≠ MATCH EXISTING

NOTE: ELEVATIONS BASED ON C.O.W. DATUM  
 M.S.L. DATUM = C.O.W. DATUM + 1187.4  
 COMPUTATIONS BASED ON C.O.W.  
 STANDARD 6 3/8" CURB & GUTTER,  
 REINFORCED CONCRETE PIPE (n=0.013),  
 1/2" MINIMUM WALK GRADE OF 0.41 FT.  
 ABOVE TOP OF CURB.



S.E. Corner, S.E. 1/4  
 Sec. 13, T27S, R2W  
 of the 6th P.M.  
 #6 Rebar in Thimble

Point of Beginning

COORDINATION WITH  
 C.O.W. PROJ. NO. 472-82411  
 REQUIRED IN CENTRAL