

# THE ABBEY AT FAIRFIELD

## AN ADDITION TO WICHITA, SEDGWICK COUNTY, KANSAS



SCALE: 1"=50'

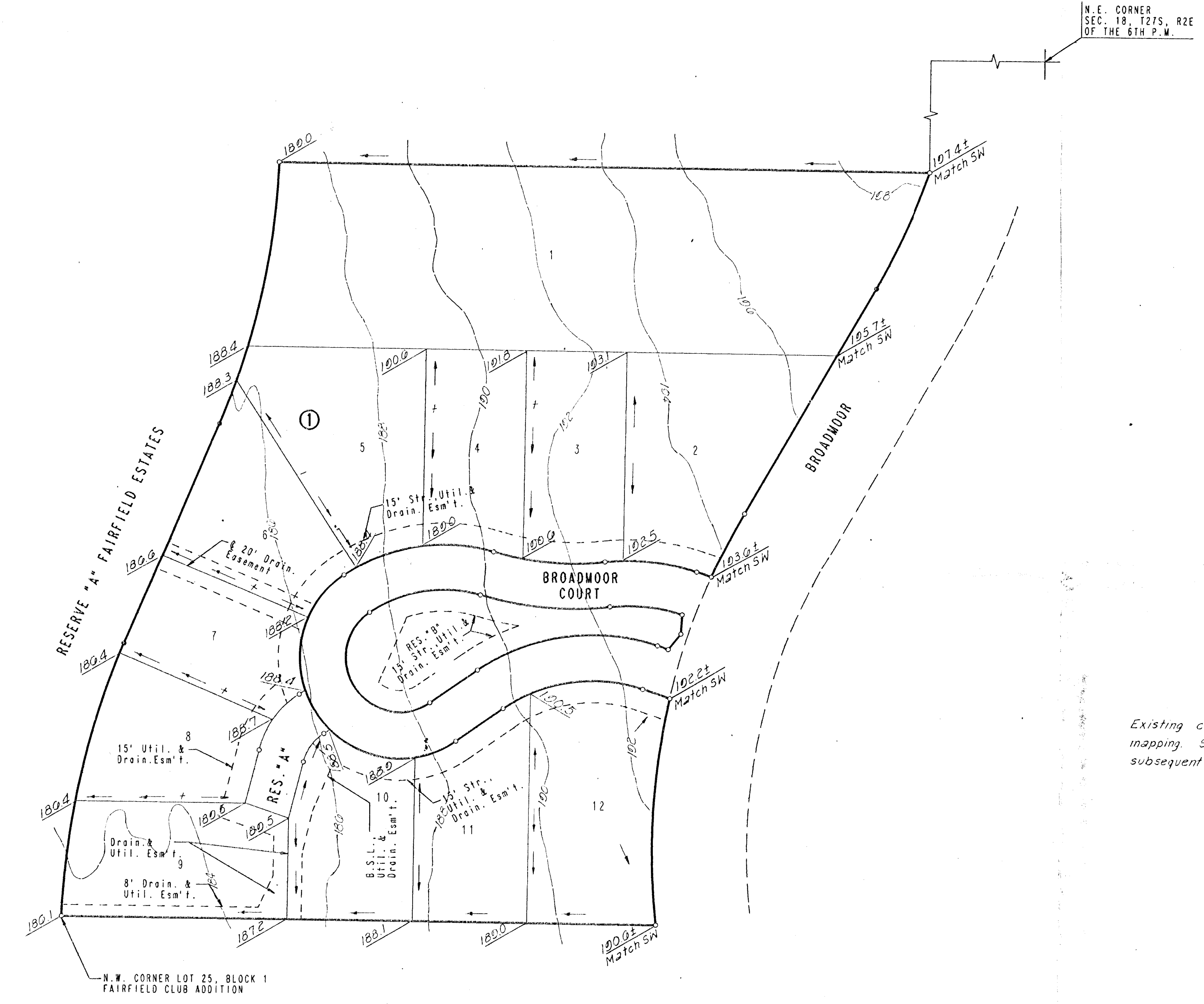
○ = IRON SET  
● = IRON FOUND

B.M. - CITY OF WICHITA BENCH MARK DISC  
42' NORTH AND 38' EAST OF INTERSECTION  
OF CENTERLINES OF ROCK ROAD AND  
13TH STREET NORTH.  
ELEV. = 186.85 (CITY DATUM)  
ELEV. = 1374.25 (M.S.L.)

B.M. - CHISELED "D" ON BACK OF CURB AT  
SOUTHEAST CORNER OF LOT 12, BLOCK 1,  
THE ABBEY AT FAIRFIELD.  
ELEV. = 190.49 (CITY DATUM)  
ELEV. = 1377.89 (M.S.L.)

MINIMUM PAD ELEVATION (LOWEST OPENING) FOR  
LOTS 1 AND 5 THROUGH 9, BLOCK 1, = 187.1  
CITY DATUM OR 1374.5 M.S.L.

PLAN	DATE
DESIGNED	
DRAWN	
CHECKED	
BY	



Existing contours shown are based on original topographic mapping. Some fill may have been placed in project area subsequent to mapping.

DRAWING NAME: 32-91314 PLAT  
LOCATION: 04 4975  
DATE LAST WORKED ON:  
SPECIAL INSTRUCTIONS:

THE ABBEY AT FAIRFIELD			
<b>DETAILED DRAINAGE PLAN</b>			
PROFESSIONAL ENGINEERING CONSULTANTS, P.A. ENGINEERS WICHITA, KANSAS			
Designed by	C.S.B.	Checked by	
Drawn by	DEP	Date	AUG., 1991 Job No. 91314