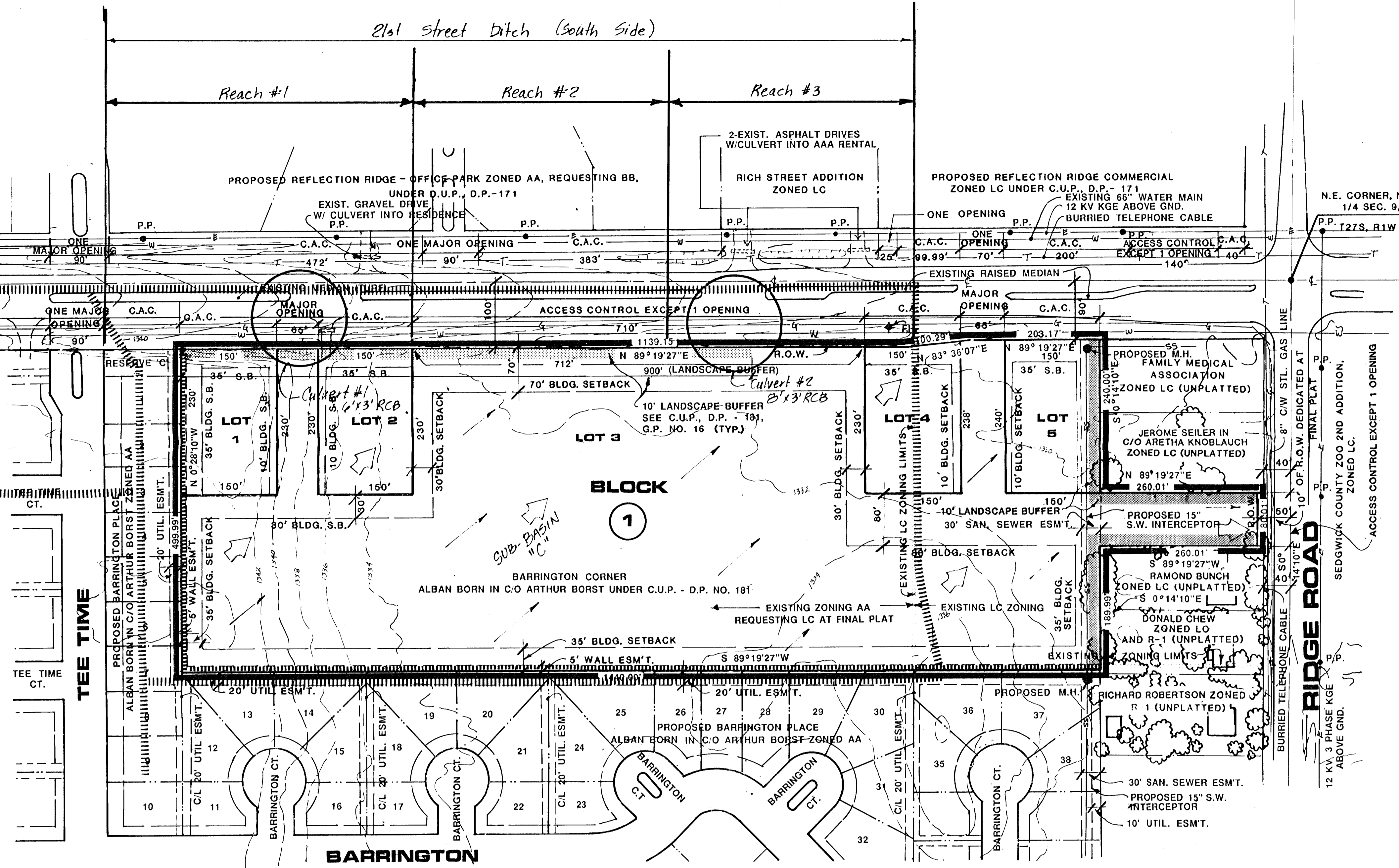
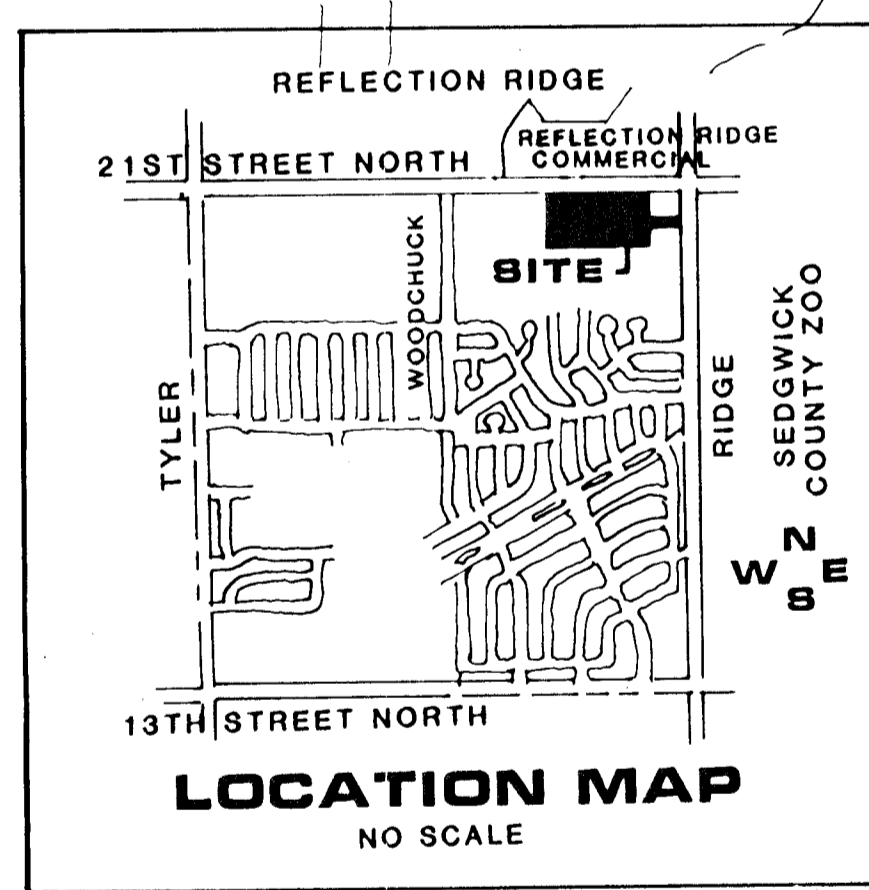
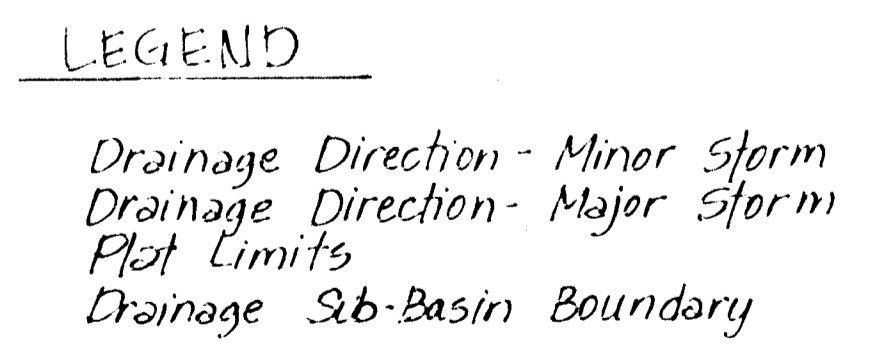


SCALE: 1" = 100'
CONTOUR INTERVAL = 2'



TOTAL ACRES = 17.075

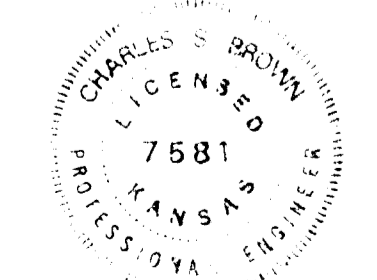


NOTES

- 1) REFERENCE THE REFLECTION RIDGE COMMERCIAL TRAFFIC STUDY DATED JULY 22, 1987 FOR INFORMATION CONCERNING DRIVE LANES, ACCEL/DECEL LANES, CHICKEN LANES, ETC. BOTH TRMPORARY AND FINAL SOLUTIONS WEST OF RIDGE ROAD ON 21ST. STREET NORTH.
- 2) TOPOGRAPHY PLOTTED FROM AERIAL PHOTOGRAPH OBTAINED JULY 25, 1986.
- 3) A DRAINAGE CONCEPT PLAN HAS BEEN PREPARED BY PROFESSIONAL ENGINEERING CONSULTANTS P.A.
- 4) BENCH MARK: N.E. CORNER OF RIDGE ROAD AND 21ST. STREET NORTH, R.R. SPIKE IN S.W. SIDE OF POWER POLE 75' NORTH AND 58' EAST OF THE CENTERLINE OF RIDGE ROAD AND 21ST. STREET NORTH. ELEVATION 1330.70

Note: Lots 1 through 5, Block 1 shall be graded to drain to existing streets and/or storm sewers via drives, flumes, private storm water sewers and/or other approved drainage facilities.

PROFESSIONAL ENGINEERING CONSULTANTS, P.A.
ENGINEERS
WICHITA, KANSAS

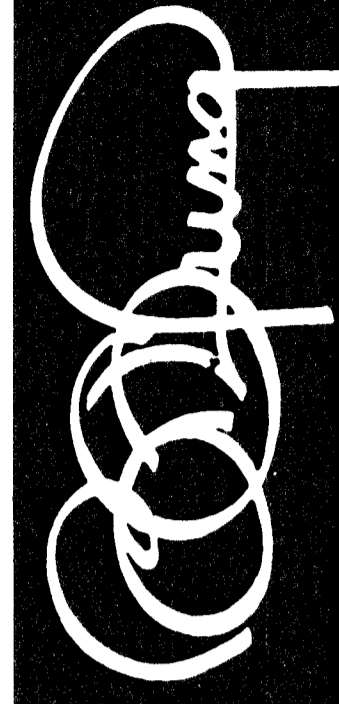


5.17.88 concept
6.17.88 plan

DRAINAGE CONCEPT PLAN (UNDER COMMERCIAL C.U.P., D.P.- 181)

BARRINGTON CORNER

RITCHE ASSOC. 8100 E. 22ND ST. N., BLDG. 500, WICHITA, KS. 67226



BILL G. YUNG DESIGN
4912 E. 29TH STREET NORTH, WICHITA, KS 67220
316-663-5667

date APRIL 25, 1988
rev.

sheet title PRELIMINARY PLAN

project BARRINGTON CORNER-COMMERCIAL

sheet 1 of 1