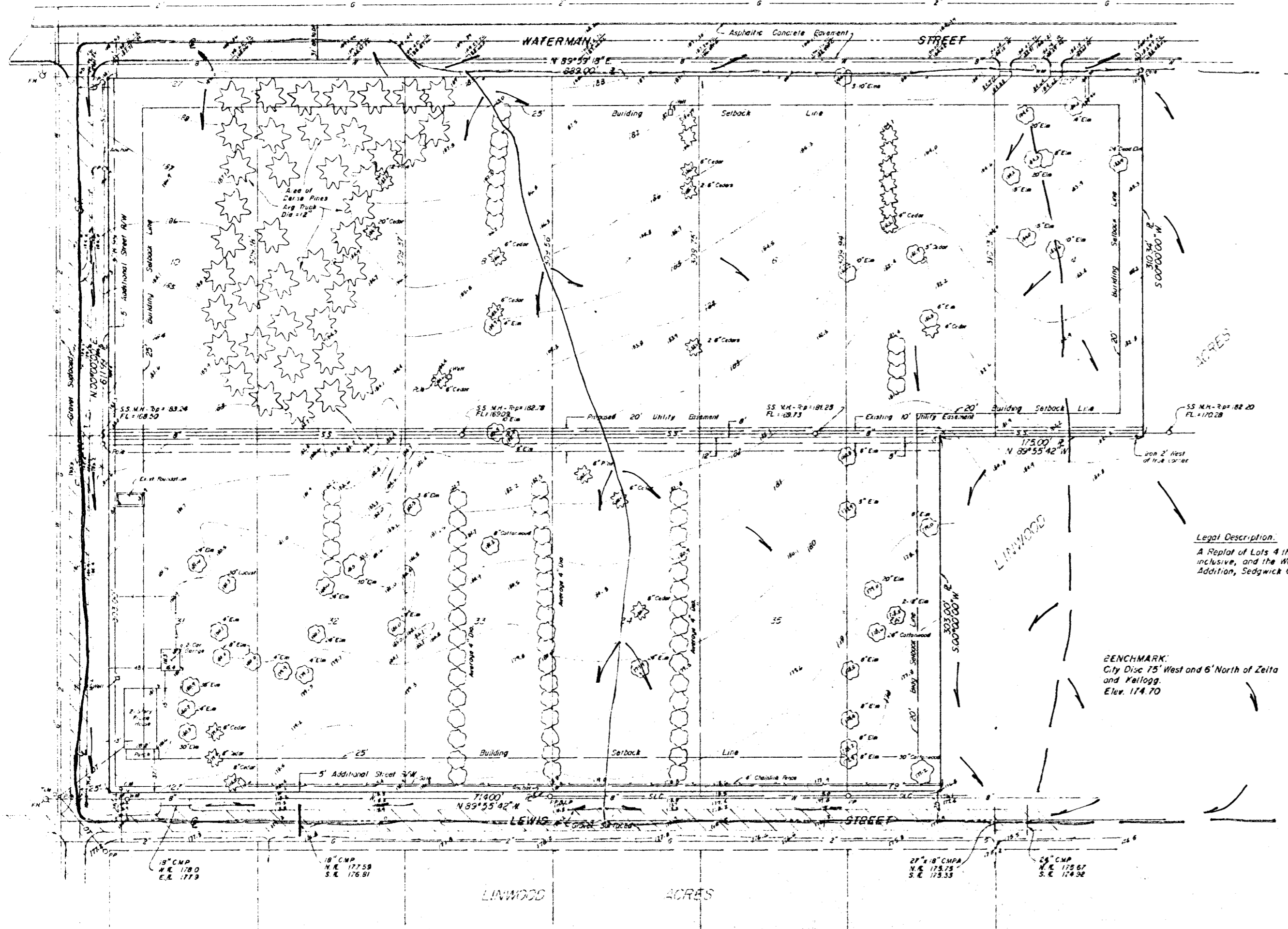
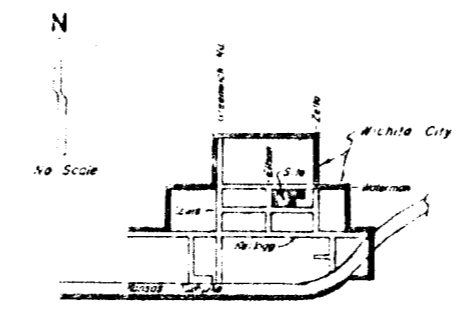


PRELIMINARY PLAT
of
BAXTER PLACE
TO WICHITA, KANSAS

EXISTING CONDITIONS



- 1" = 40'
- = Iron
 - W = Water Main
 - FM = Fire Hydrant
 - SS = Sanitary Sewer
 - SLC = Street Light Circuit
 - ℙ = Property Line
 - ℙℙ = Spot Elevation
 - ℙ = Gas Main
 - WM = Water Meter
 - SM = Gas Meter
 - OT = Overhead Pole
 - PP = Power Pole

Legal Description.
A Replat of Lots 4 thru 10 inclusive, and Lots 31 thru 35 inclusive, and the West 79' of Lot 36, Linwood Acres Addition, Sedgewick County, Kansas.

BENCHMARK:
City Disc 75' West and 6' North of Zelta and Follg.
Elev. 174.70

MCEHRING & ASSOCIATES
CONSULTING ENGINEERS
WICHITA

LINWOOD ACRES

15' CMP
N.E. 1780
S.E. 1773

18' CMP
N.E. 1775B
S.E. 1769I

27' x 18' CMP
N.E. 1775
S.E. 1753

28' CMP
N.E. 1756
S.E. 1749