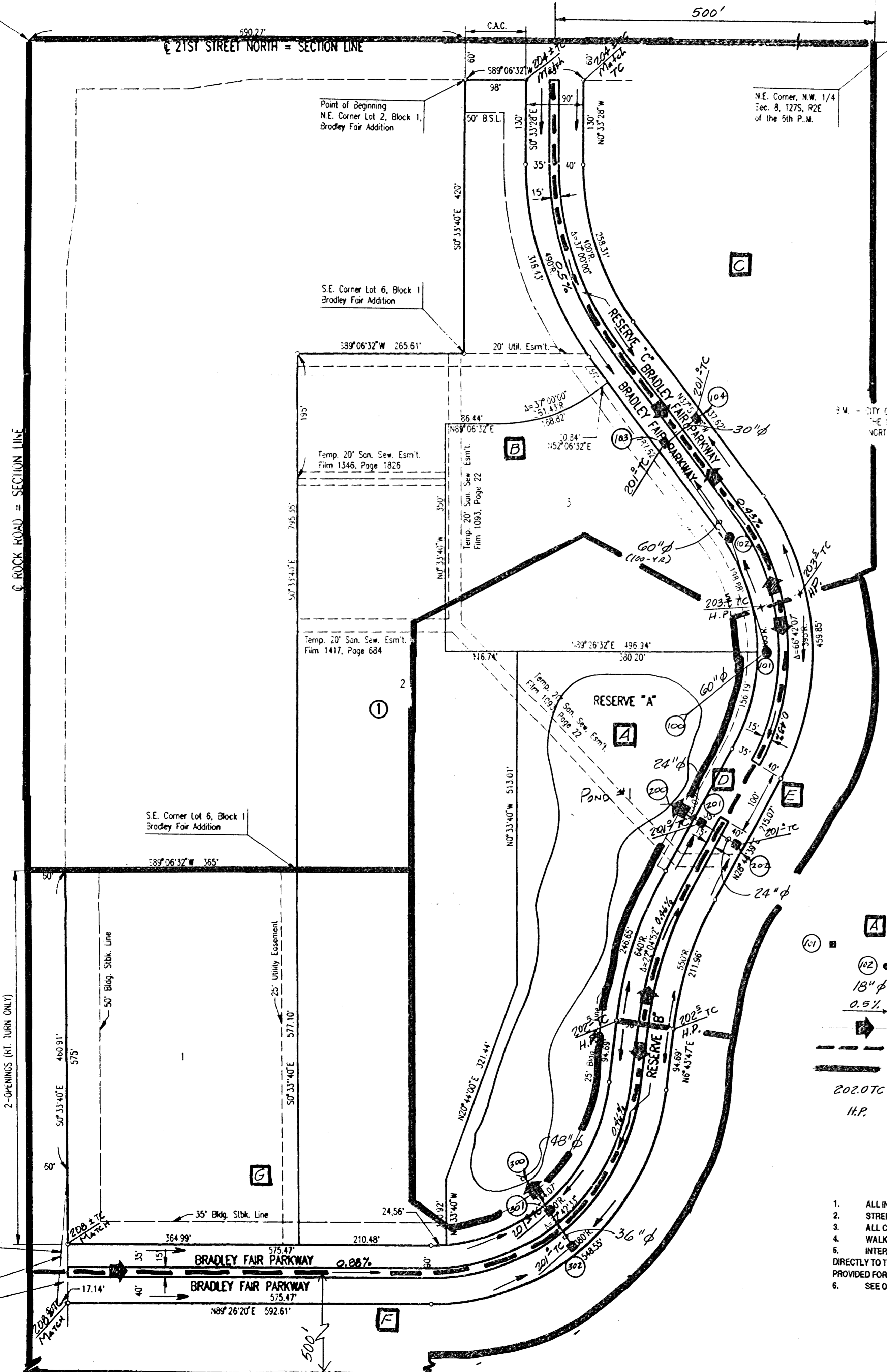


DRAINAGE PLAN BRADLEY FAIR 2ND ADDITION TO WICHITA, SEDGWICK COUNTY, KANSAS

N.W. Corner
Sec. 8, T27S, R2E
of the 5th P.M.



SCALE: 1"=100'

P.M. - CITY OF WICHITA B.M. DISC. 45' NORTH AND 48' EAST OF THE INTERSECTION OF THE CENTERLINES OF 21ST STREET NORTH AND ROCK ROAD. ELEV. 214.568 CITY DATUM

LEGEND

- A DRAINAGE AREA DESIGNATION
- INLET INLET WITH NODE NUMBER
- 182 MANHOLE WITH NODE NUMBER
- 18" φ STORM SEWER DIAMETER (n^o = 0.013)
- 0.5% MINOR STORM FLOW DIRECTION & LONGITUDINAL STREET GRADE
- MAJOR STORM FLOW DIRECTION
- MINOR STORM CREST
- MAJOR STORM CREST
- 202.0TC TOP OF CURB ELEVATION
- H.P. HIGH POINT

NOTES

1. ALL INLETS TO BE C.O.W. TYPE 1A.
2. STREET CROSS SLOPE 3/8 INCH PER FOOT.
3. ALL COMBINED CURB & GUTTER TO BE C.O.W. STANDARD 6 5/8 INCH.
4. WALK GRADE ELEVATION = T.C. + 0.5 FEET.
5. INTERIOR PAVED AREAS IN EXCESS OF 1.25 ACRES WILL NOT BE DISCHARGED DIRECTLY TO THE STREET. APPROVED PUBLIC/PRIVATE STORM WATER SEWERS WILL BE PROVIDED FOR THESE FLOWS.
6. SEE OTHER PLAN SHEET FOR POND NO. 1 DATA.

PREPARED BY
PROFESSIONAL ENGINEERING CONSULTANTS, P.A.
12/18/95

R/W Film 1484,
Page 937

204.81'
S4°14'23"W
Street
Dedication

C. ROCK ROAD = SECTION LINE

2-OPENINGS (W/ TURN ONLY)

S.E. Corner Lot 6, Block 1
Bradley Fair Addition

Point of Beginning
N.E. Corner Lot 2, Block 1,
Bradley Fair Addition

S.E. Corner Lot 6, Block 1
Bradley Fair Addition

N.E. Corner, N.W. 1/4
Sec. 8, T27S, R2E
of the 5th P.M.

RESERVE "A"

Pond #1

RESERVE "C"

RESERVE "B"

RESERVE "D"

RESERVE "E"

RESERVE "F"

RESERVE "G"

RESERVE "H"

RESERVE "I"

RESERVE "J"