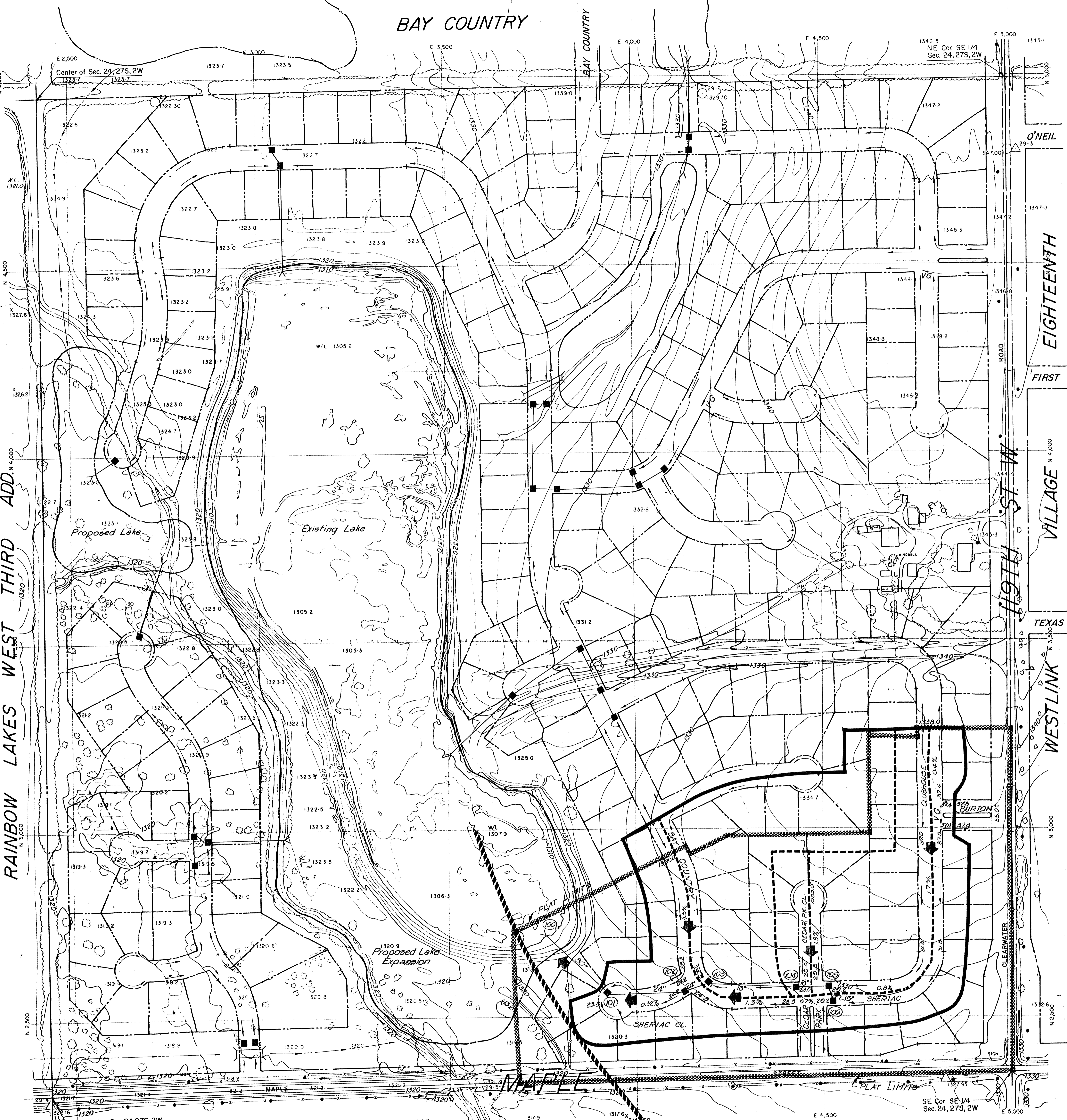


BAY COUNTRY



RAINBOW LAKES WEST THIRD ADD

EIGHTEENTH  
FIRST  
VILLAGE  
WESTLINK  
TEXAS

DRAINAGE PLAN

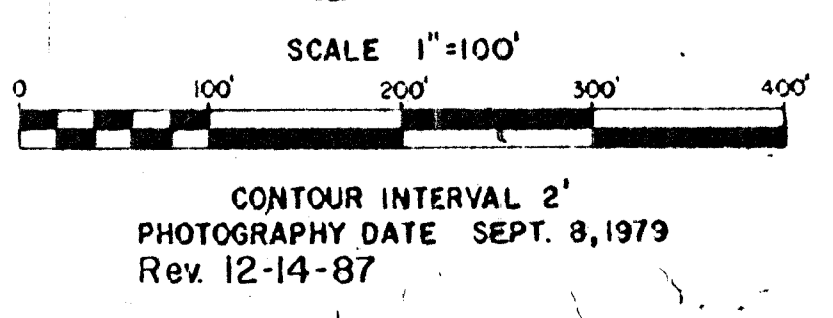
# BAY COUNTRY ESTATES

OWNER: WESTLINK INVESTMENT CORPORATION - THURMAN SMITH  
11216 W. MAPLE WICHITA, KS. 67209

PREPARED BY  
MILES AIR PHOTO SURVEY  
PHOTOGRAMMETRIC SERVICES  
OWING, KANSAS 66849  
(913) 482-3550 FILE NO. M-13-43

PREPARED FOR  
ALLIED LABORATORIES

TOPOGRAPHIC MAP OF LANDS LOCATED  
IN THE S.E. 1/4 OF SEC. 24  
T. 27S. R. 2W., SEDGWICK COUNTY, KANSAS



- LEGEND**
- Drainage Basin Boundary
  - - - Drainage Sub-basin Boundary
  - Drainage Direction - Minor Storm
  - Drainage Direction - Major Storm
  - ⊙ Node Identification
  - ⊙ Inlet & Pipe Size
  - 29.2 Approx. Top Curb Elev.

