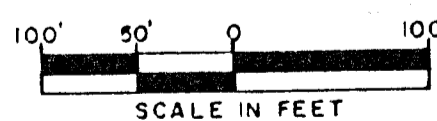
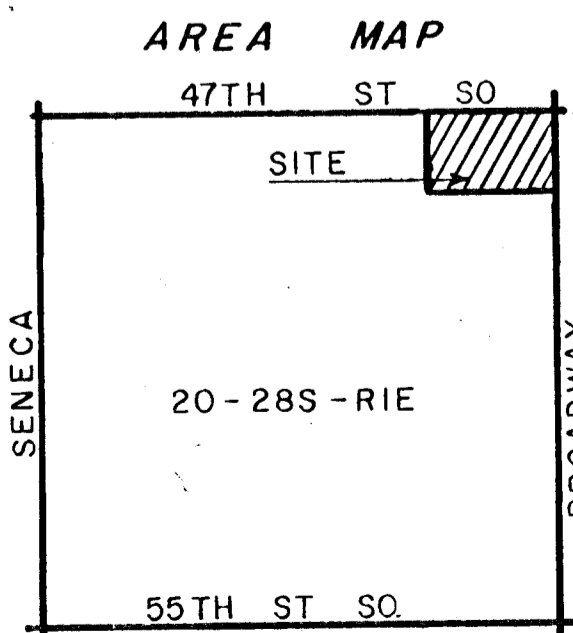


DRAINAGE PLAN BROADWAY 47 PLAZA 2nd

OWNER: TRABORN INVESTMENT CO.
C/O GARY L. NEWGENT
3831-A NORTH SANTA FE
OKLA. CITY, OKLA. 73118

ENGINEER: P.E.C. p.a
1440 ENGLISH
WICHITA, KS. 67211

Note: Lot 1 shall be graded to drain to existing streets and storm water sewers via drives, flumes, private storm water sewers and/or other approved drainage facilities.



OCTOBER, 1986
B.M.: City of Wichita Brass
Cap 40.8' E 44.4' North of
Inter. Broadway & 143rd
Elev. = 85.98 City Datum
Topo: 9-4-86 & 1-20-87

