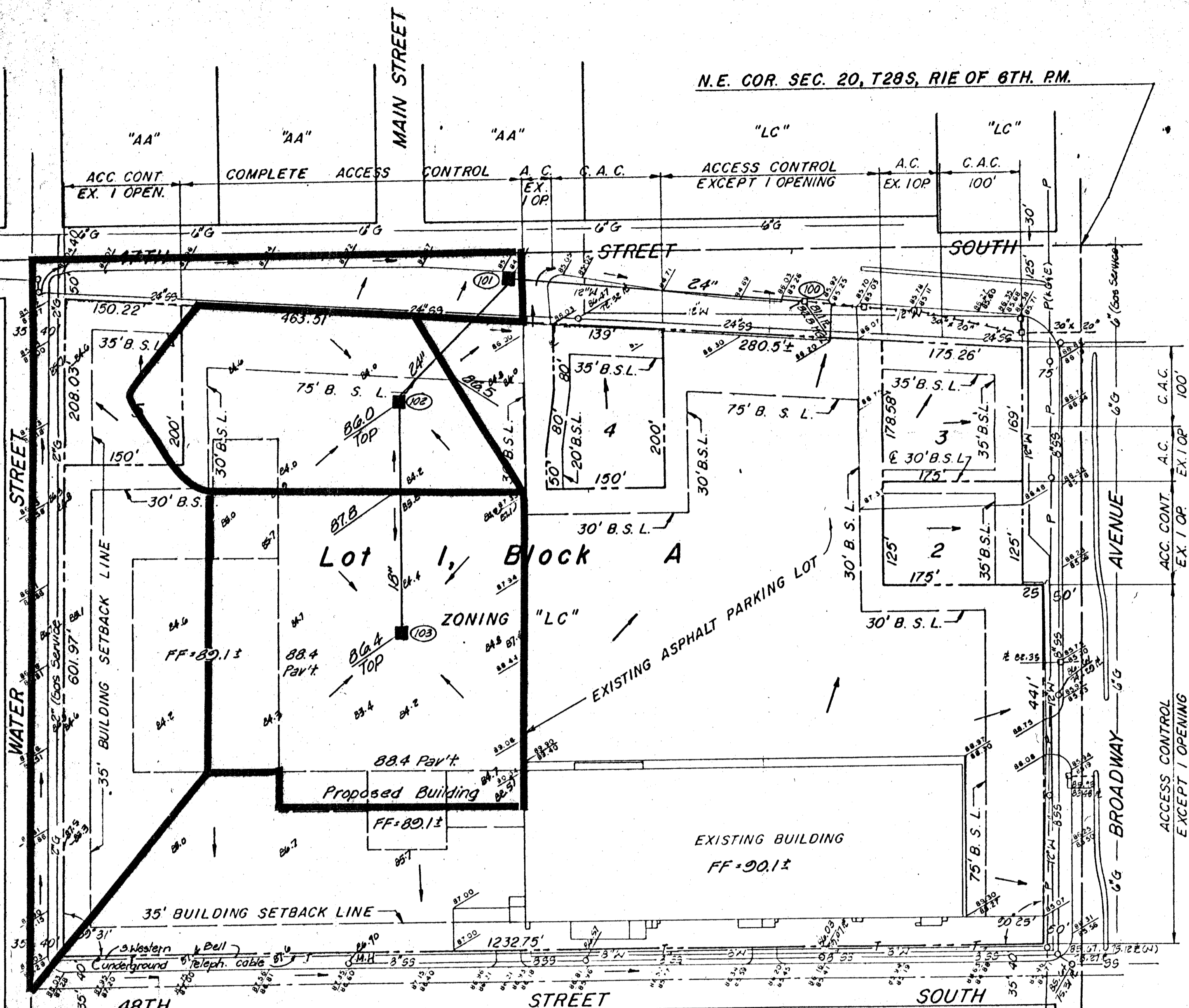


N.E. COR. SEC. 20, T28S, R1E OF 6TH. PM.



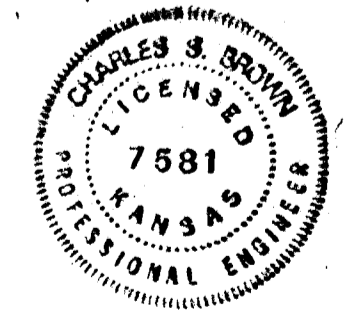
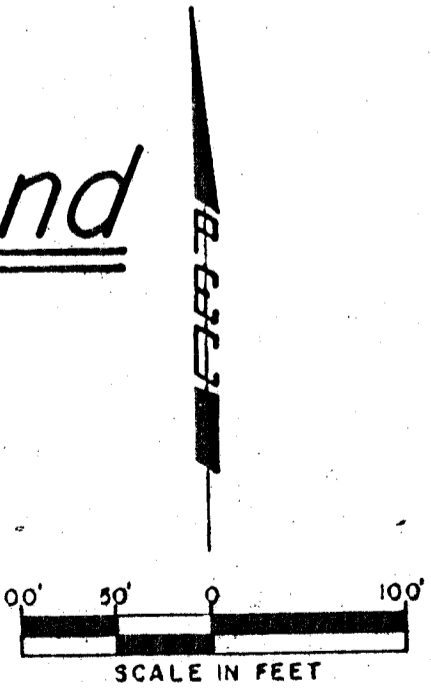
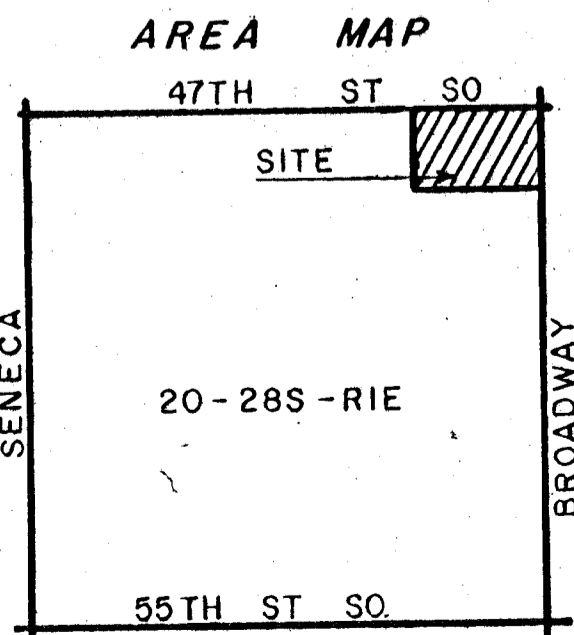
DRAINAGE PLAN 3-27-87

BROADWAY 47 PLAZA 2nd

OWNER: TRABORN INVESTMENT CO.
 C/O GARY L. NEWGENT
 3831-A NORTH SANTA FE
 OKLA. CITY, OKLA. 73118

ENGINEER: P.E.C. p. a
 1440 ENGLISH
 WICHITA, KS. 67211

Notes: E 1/2 Lot 1 shall continue to drain to existing streets and storm water sewers via drives, flumes, etc.
 W 1/2 Lot 1 shall be graded to drain to streets & to existing storm water sewers via drives, flumes, private storm water sewers and/or other approved drainage facilities.



OCTOBER, 1986
 B.M.: City of Wichita Brass
 Cap 40.8' E 144.4' North of
 Inter. Broadway & 143rd
 Elev. = 85.98 City Datum
 Topo: 9-4-86 & 1-20-87