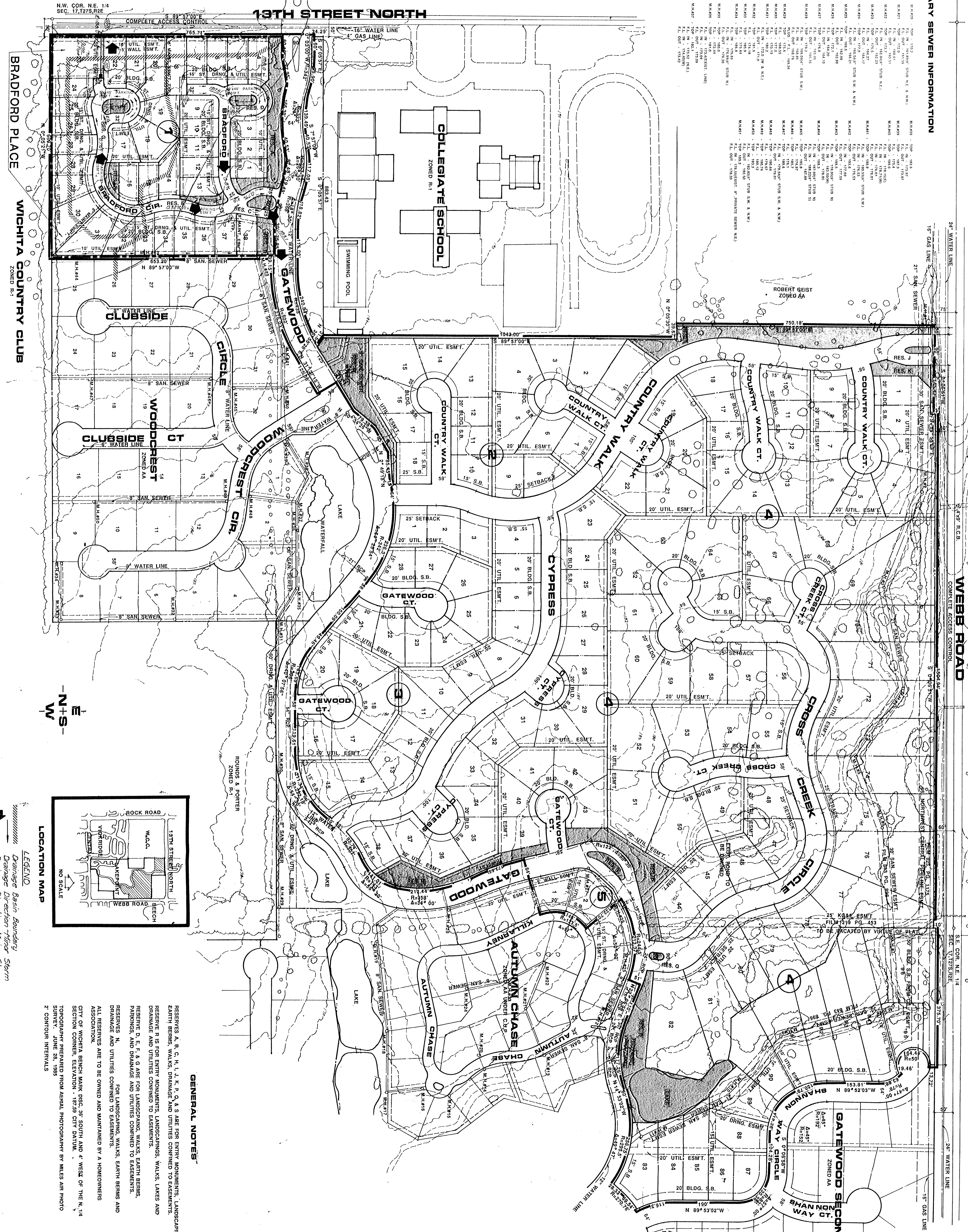


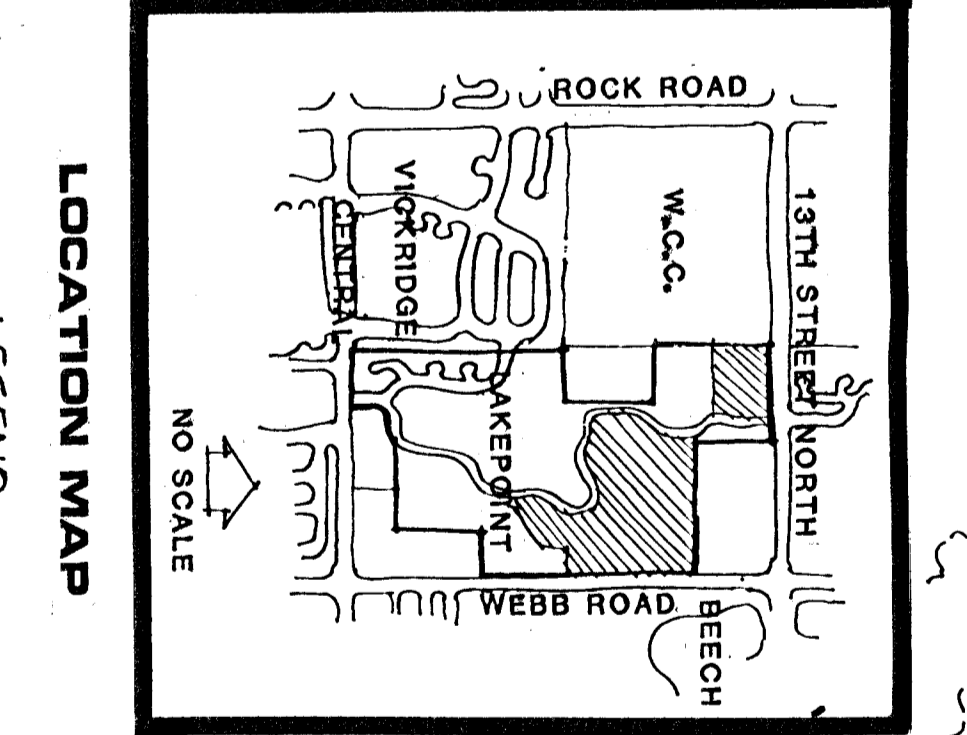
SANITARY SEWER INFORMATION

NO.	TYPE	SIZE	DEPTH	LOCATION
MS401	18"	18"	4'-0"	18" WATER LINE
MS402	18"	18"	4'-0"	18" GAS LINE
MS403	18"	18"	4'-0"	18" SAN. SEWER
MS404	18"	18"	4'-0"	18" SAN. SEWER
MS405	18"	18"	4'-0"	18" SAN. SEWER
MS406	18"	18"	4'-0"	18" SAN. SEWER
MS407	18"	18"	4'-0"	18" SAN. SEWER
MS408	18"	18"	4'-0"	18" SAN. SEWER
MS409	18"	18"	4'-0"	18" SAN. SEWER
MS410	18"	18"	4'-0"	18" SAN. SEWER
MS411	18"	18"	4'-0"	18" SAN. SEWER
MS412	18"	18"	4'-0"	18" SAN. SEWER
MS413	18"	18"	4'-0"	18" SAN. SEWER
MS414	18"	18"	4'-0"	18" SAN. SEWER
MS415	18"	18"	4'-0"	18" SAN. SEWER
MS416	18"	18"	4'-0"	18" SAN. SEWER
MS417	18"	18"	4'-0"	18" SAN. SEWER
MS418	18"	18"	4'-0"	18" SAN. SEWER
MS419	18"	18"	4'-0"	18" SAN. SEWER
MS420	18"	18"	4'-0"	18" SAN. SEWER
MS421	18"	18"	4'-0"	18" SAN. SEWER
MS422	18"	18"	4'-0"	18" SAN. SEWER
MS423	18"	18"	4'-0"	18" SAN. SEWER
MS424	18"	18"	4'-0"	18" SAN. SEWER
MS425	18"	18"	4'-0"	18" SAN. SEWER
MS426	18"	18"	4'-0"	18" SAN. SEWER
MS427	18"	18"	4'-0"	18" SAN. SEWER
MS428	18"	18"	4'-0"	18" SAN. SEWER
MS429	18"	18"	4'-0"	18" SAN. SEWER
MS430	18"	18"	4'-0"	18" SAN. SEWER
MS431	18"	18"	4'-0"	18" SAN. SEWER
MS432	18"	18"	4'-0"	18" SAN. SEWER
MS433	18"	18"	4'-0"	18" SAN. SEWER
MS434	18"	18"	4'-0"	18" SAN. SEWER
MS435	18"	18"	4'-0"	18" SAN. SEWER
MS436	18"	18"	4'-0"	18" SAN. SEWER
MS437	18"	18"	4'-0"	18" SAN. SEWER
MS438	18"	18"	4'-0"	18" SAN. SEWER
MS439	18"	18"	4'-0"	18" SAN. SEWER
MS440	18"	18"	4'-0"	18" SAN. SEWER
MS441	18"	18"	4'-0"	18" SAN. SEWER
MS442	18"	18"	4'-0"	18" SAN. SEWER
MS443	18"	18"	4'-0"	18" SAN. SEWER
MS444	18"	18"	4'-0"	18" SAN. SEWER
MS445	18"	18"	4'-0"	18" SAN. SEWER
MS446	18"	18"	4'-0"	18" SAN. SEWER
MS447	18"	18"	4'-0"	18" SAN. SEWER
MS448	18"	18"	4'-0"	18" SAN. SEWER
MS449	18"	18"	4'-0"	18" SAN. SEWER
MS450	18"	18"	4'-0"	18" SAN. SEWER



PLAN
DRAINAGE CONCEPT (REPLAT OF A PORTION OF GATEWOOD SECOND AND AUTUMN CHASE ADDITIONS)

COUNTRY CLUB WALK



- LEGEND**
- Drainage Basin Boundary
 - Drainage Direction (Tidal Storm)
 - Proposed S.M.S. Trunks
 - Proposed Valley Gutters
 - NO SCALE

GENERAL NOTES

RESERVES A, B, C, H, I, J, K, P, Q, & R ARE FOR ENTRY MONUMENTS, LANDSCAPING, EARTH BERMS, WALKS, DRAINAGE AND UTILITIES CONFINED TO EASEMENTS. RESERVE R IS FOR ENTRY MONUMENTS, LANDSCAPING, WALKS, LAKES AND DRAINAGE AND UTILITIES CONFINED TO EASEMENTS. RESERVE D, E, F, & G ARE FOR LANDSCAPING, WALKS, EARTH BERMS, PARKINGS, AND DRAINAGE AND UTILITIES CONFINED TO EASEMENTS. RESERVES N AND UTILITIES CONFINED TO EASEMENTS. ALL RESERVES ARE TO BE OWNED AND MAINTAINED BY A HOMEOWNERS ASSOCIATION. FOR LANDSCAPING, WALKS, EARTH BERMS AND DRAINAGE AND UTILITIES CONFINED TO EASEMENTS. CITY OF WICHITA BEING MARK SEC. 3F, SOUTH AND 4' WEST OF THE N. 1/4 SECTION CORNER, ELEVATION - 1872.9 CITY DATUM. TOPOGRAPHY PREPARED FROM AERIAL PHOTOGRAPHY BY MILES AIR PHOTO SURVEY, LINE 26, 1988. 2' CONTOUR INTERVALS.