

November 25, 1997

Young & Associates, P.A.
Civil and Environmental Engineers



Ms. Vicki Huang, P.E.
City Engineer's Office
City of Wichita, City Hall - 7th Floor
455 North Main Street
Wichita, Kansas 67202

RE: **Eastside Community Church Addition**
(SE Corner of 21st St. N. and Greenwich Rd.)
Y&A Project No. 97-041-115

Dear Vicki,

Attached herewith as requested is a revised Drainage Basin Map indicating a concept layout plan for constructing on-site detention pond(s) for the above referenced plat.

The platted reserve area is intended to be used for stormwater detention as needed to accommodate the difference between pre-developed and post-developed stormwater discharge. In accordance with the Drainage Study, submitted with the above plat, the maximum discharge rate along the south line of Reserve A is $Q_{(100\text{-year})} = 590$ cfs.

If you should require any additional information, or have questions regarding the proposed future detention facility, or the plat in general, please do not hesitate contacting me at 788-2552.

Very truly yours,

Christopher R. Young, P.E.

xc: Mr. Vic Schimming

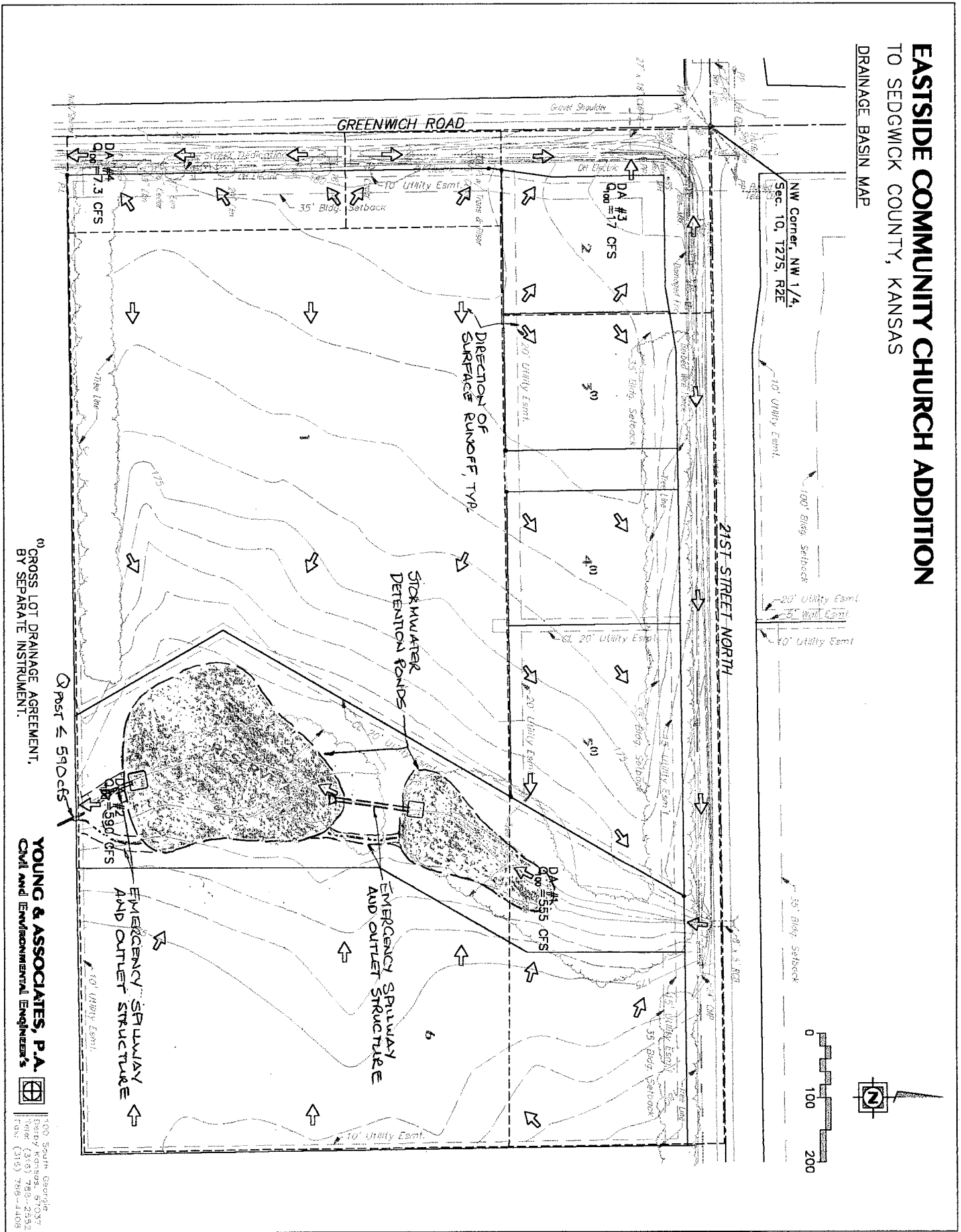
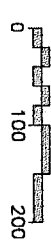
RECEIVED

NOV 25 1997

CITY - ENGINEERING

EASTSIDE COMMUNITY CHURCH ADDITION TO SEDGWICK COUNTY, KANSAS DRAINAGE BASIN MAP

NW Corner, NW 1/4,
Sec. 10, T27S, R2E



1) CROSS LOT DRAINAGE AGREEMENT,
BY SEPARATE INSTRUMENT.

YOUNG & ASSOCIATES, P.A.
CIVIL AND ENVIRONMENTAL ENGINEERS

100 South Georgia
Berwyn, Kansas, 67037
Phone: (316) 788-2352
Fax: (316) 788-4408

September 30, 1997

Young & Associates, P.A.
Civil and Environmental Engineers



Mr. Vicki Huang, P.E.
City Engineer's Office
City Hall - Seventh Floor
455 North Main Street
Wichita, Kansas 67202

RE: **Eastside Community Church Addition**
(SE Corner of 21st St. N. and Greenwich Rd.)
Y&A Project No. 97-041-115

Dear Vicki,

Transmitted herewith for your review and approval is the Drainage Study and Hydraulic Computations for the above referenced plat.

We appreciate your continued assistance in reviewing the attached plat. If you should require any additional information, or have questions regarding document attached, please do not hesitate contacting the undersigned at 788-2552.

Very truly yours,



Christopher R. Young, P.E.

xc: Mr. Vic Schimming