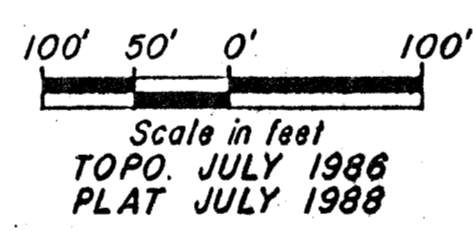
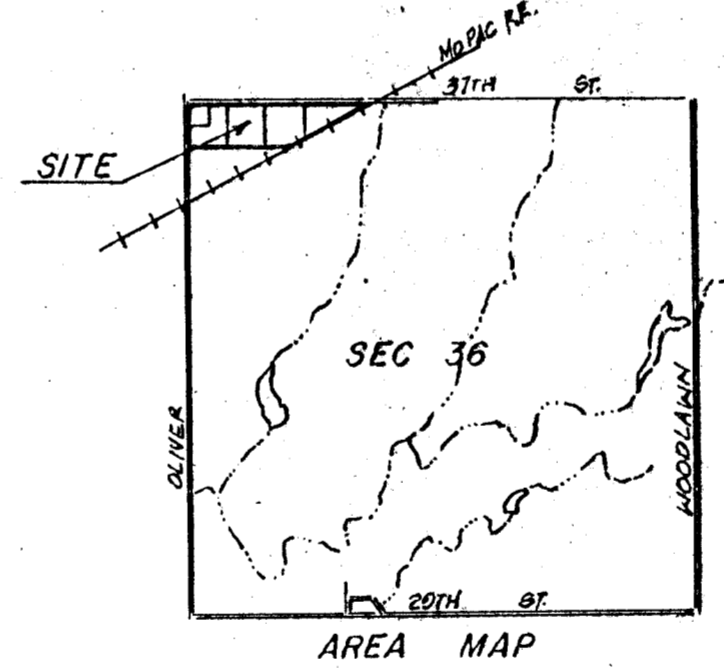


B.M. City of Wichita B.M. disc, east end of headwall to R.B.C. on 37th St. 34 ft west & 22.5 ft south of intersection of centerlines of Oliver & 37th St. No. Elev = 184.031 City datum = 1972.031 M.S.L.



DRAINAGE PLAN 10-21-88 rev. 11-10-88

# EXPRESSWAY CENTER

Owner:  
**McArthur Beach Properties**  
 c/o Jack Ritchie  
 8100 E. 22nd St. No. Bldg. 500  
 Wichita, Ks. 67226

Engr. **P. E. C. p.a.**  
 1440 English  
 Wichita, Ks. 67211

**NOTE:**

Lots 1 through 4, Block 1 shall be graded to drain to existing ditches, streams, etc. via drives, flumes, private storm water sewers and/or other approved drainage facilities.

**LEGEND:**

- Drainage Direction - Minor Storm
- Drainage Direction - Major Storm
- Drainage Basin Boundary
- 
- 
- Drainage Sub-Basin Boundary

