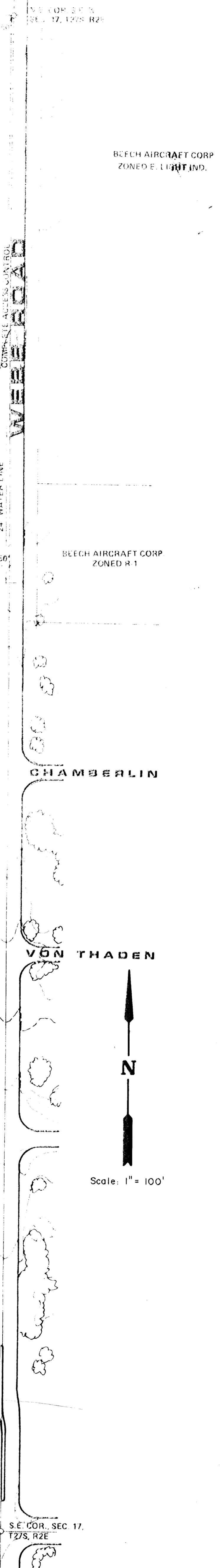
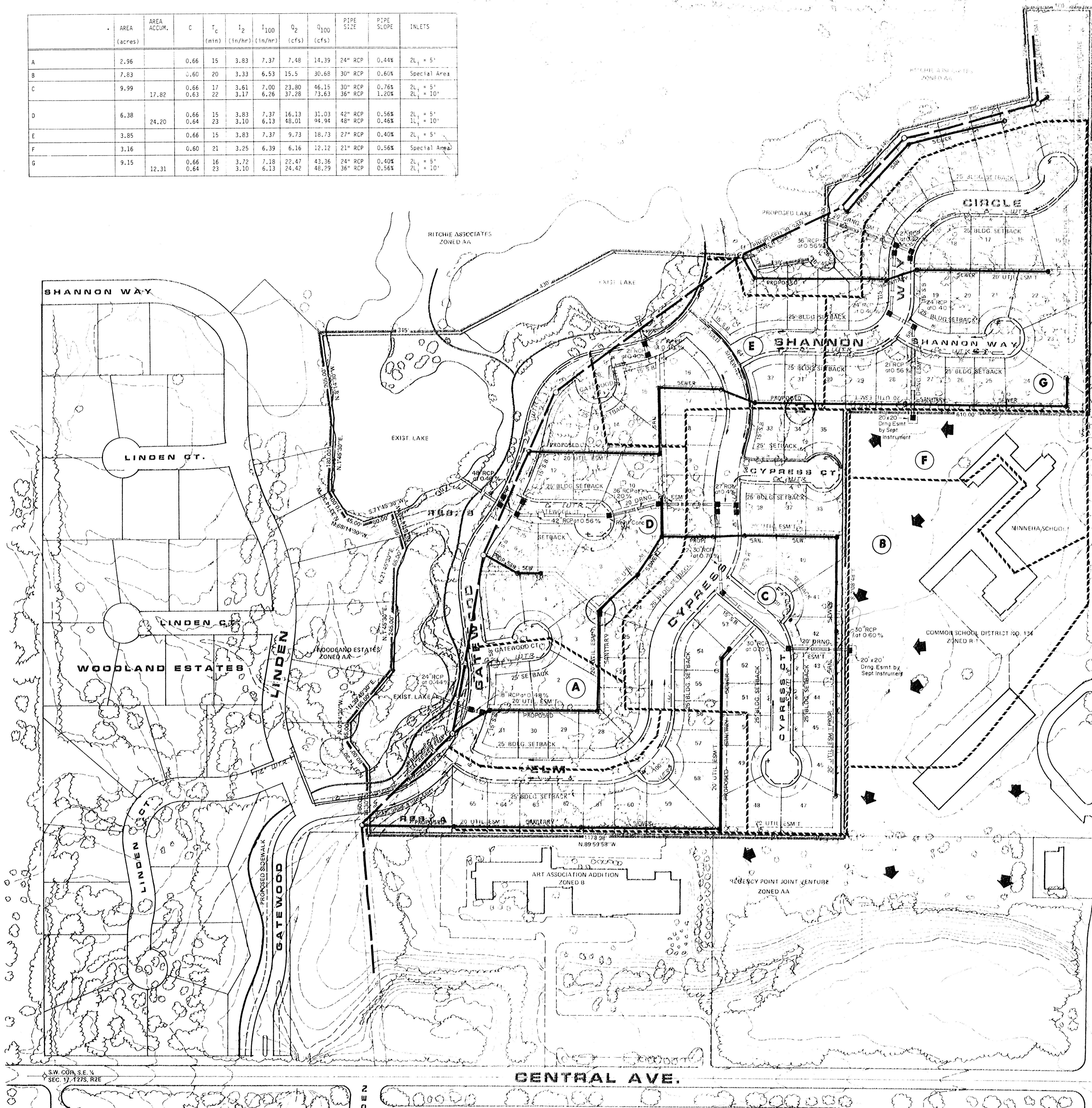


	AREA (acres)	AREA ACCUM.	C	T <sub>c</sub> (min)	I <sub>2</sub> (in/hr)	I <sub>100</sub> (in/hr)	Q <sub>2</sub> (cfs)	Q <sub>100</sub> (cfs)	PIPE SIZE	PIPE SLOPE	INLETS
A	2.96		0.66	15	3.83	7.37	7.48	14.39	24" RCP	0.44%	2L, + 5'
B	7.83		0.60	20	3.33	6.53	15.5	30" RCP	0.60%		Special Area
C	9.99	17.82	0.66	17	3.61	7.00	23.80	30" RCP	0.75%	2L, + 5'	
			0.63	22	3.17	6.26	37.28	36" RCP	1.20%	2L, + 10'	
D	6.38	24.20	0.66	15	3.83	7.37	16.13	42" RCP	0.56%	2L, + 5'	
			0.64	23	3.10	6.13	46.01	48" RCP	0.46%	1L, + 10'	
E	3.85		0.66	15	3.83	7.37	9.73	27" RCP	0.40%	2L, + 5'	
F	3.16		0.60	21	3.25	6.39	6.16	12.12	21" RCP	0.56%	Special Area
G	9.15	12.31	0.66	16	3.72	7.18	22.47	24" RCP	0.40%	2L, + 5'	
			0.64	23	3.10	6.13	24.42	36" RCP	0.56%	2L, + 10'	



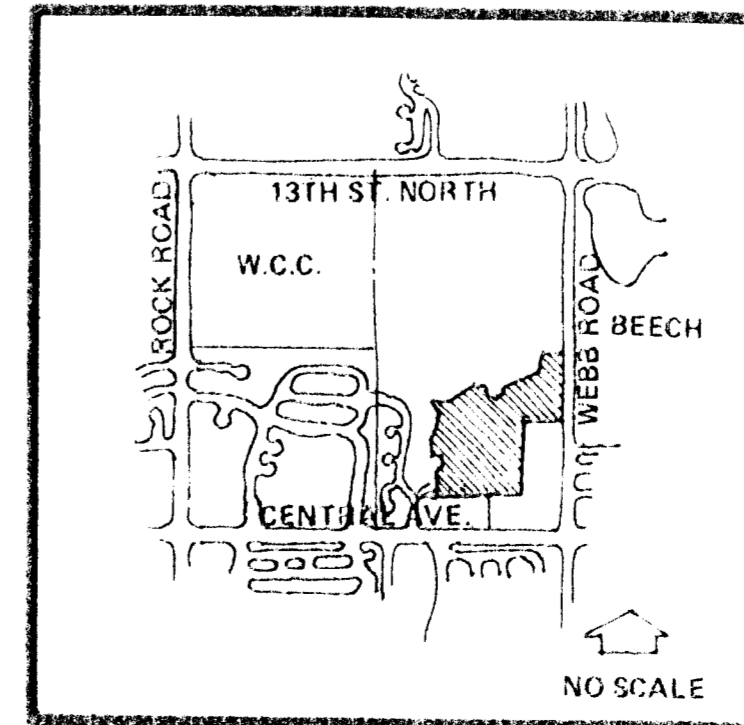
**NOTES:**

- TOPOGRAPHY IS FROM AERIAL PHOTOGRAPHY TAKEN JUNE 1985
- A DRAINAGE CONCEPT PLAN IS TO BE SUBMITTED TO CITY ENGINEER BY M.K.E.C.
- RESERVE "A" IS FOR DRAINAGE, UTILITIES, LANDSCAPING, ENTRY MONUMENTS AND WALKS.
- RESERVE "B" IS FOR DRAINAGE, UTILITIES, LANDSCAPING, ENTRY MONUMENTS, WALKS, GAZEBOS AND EXERCISE PATHS.

DRAINAGE AND UTILITY PLAN

# GATEWOOD

OWNER: RITCHIE ASSOCIATES, 8100 E. 22ND ST. NO., BLDG. 800, WICHITA, KANSAS 67228



**LOCATION MAP**

MID-KANSAS ENGINEERING CONSULTANTS PA  
 8500 N. ROCK ROAD  
 SUITE 100  
 WICHITA, KANSAS 67228  
 652-6561