

# DRAINAGE PLAN

LOT 1, P.C. INDUSTRIAL ADDITION,  
WICHITA, KANSAS.

**PARCEL A:**

That part of Lot 1, P.C. Industrial Addition, Wichita, Sedgwick County, Kansas, lying north of the south line of the 60 foot Railroad Spur Track easement, as platted in said Addition.

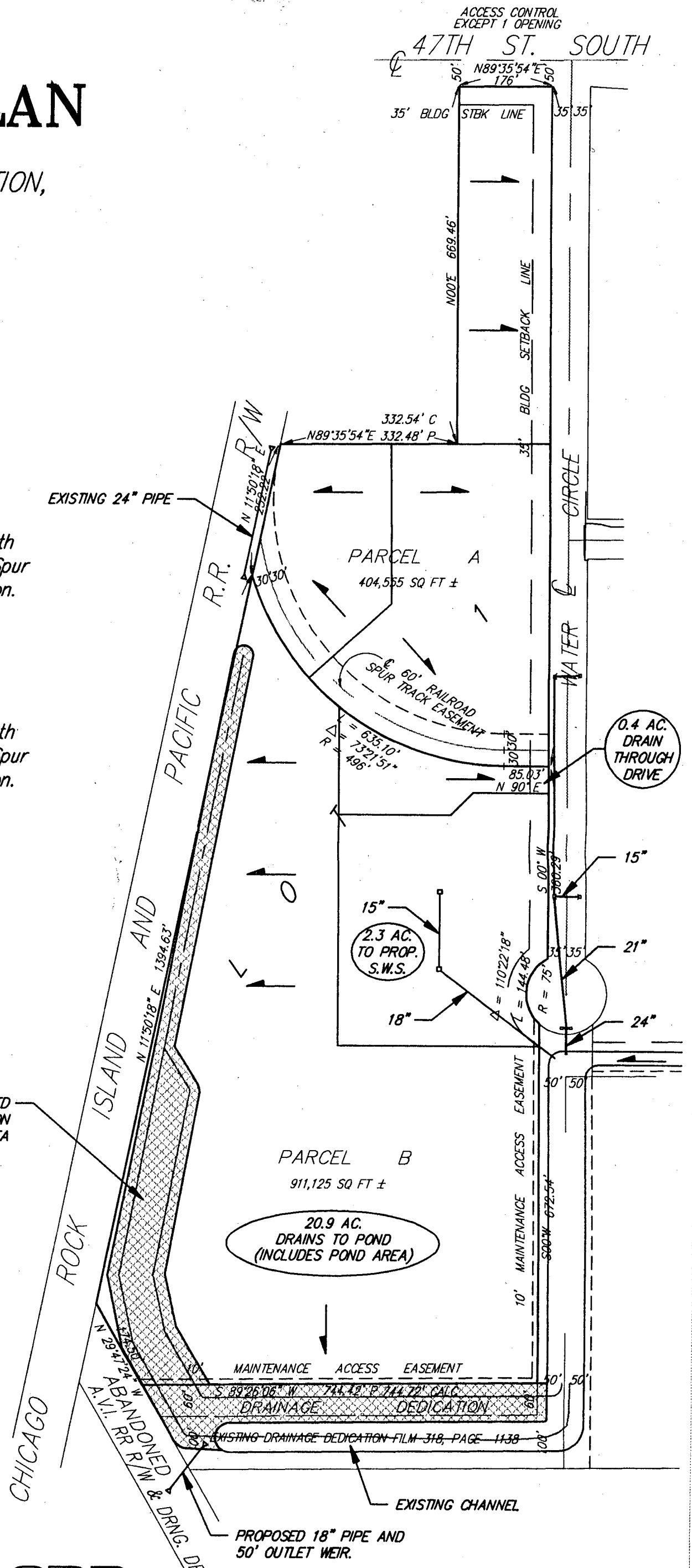
**PARCEL B:**

That part of Lot 1, P.C. Industrial Addition, Wichita, Sedgwick County, Kansas, lying south of the south line of the 60 foot Railroad Spur Track easement, as platted in said Addition.

1" = 200'

**NOTES:**

- TOTAL DETENTION STORAGE INDICATED = 20.2 AC. FT. @ ELEV. 84.6 (1272.0 M.S.L.) NOT INCLUDING CHANNEL STORAGE EAST OF WATER CIRCLE
- 1984 DRAINAGE REPORT INDICATES DETENTION OF 20.1 AC. FT. @ 1272.0 M.S.L.
- SITE GRADING PLANS TO BE APPROVED BY ENGINEERING DEPT. AT TIME OF DEVELOPMENT



**SRB** 924 NORTH MAIN 316-264-8008  
WICHITA, KANSAS 67203 FAX 264-4621

**SAVOY, RUGGLES & BOHM, P. A.**  
ENGINEERING & SURVEYING

DATE: JULY 29, 1994  
DWG FILE: 168E\JOOSBER2