

# REVISED DRAINAGE PLAN FOR LOT SPLIT

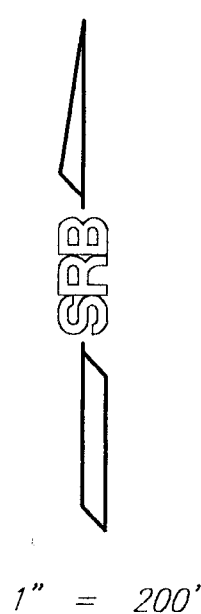
LOT 1, P.C. INDUSTRIAL ADDITION, WICHITA, KANSAS.

**PARCEL A:**

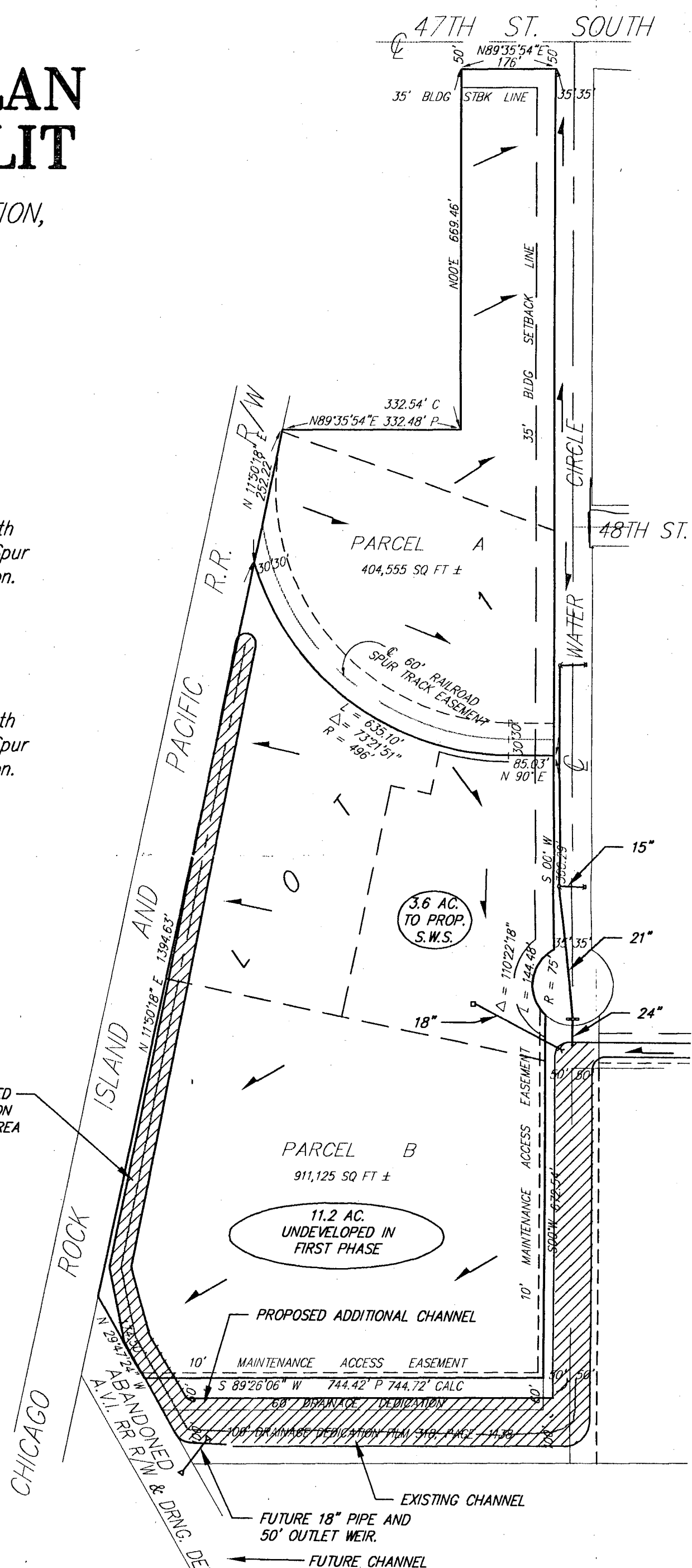
That part of Lot 1, P.C. Industrial Addition, Wichita, Sedgwick County, Kansas, lying north of the south line of the 60 foot Railroad Spur Track easement, as platted in said Addition.

**PARCEL B:**

That part of Lot 1, P.C. Industrial Addition, Wichita, Sedgwick County, Kansas, lying south of the south line of the 60 foot Railroad Spur Track easement, as platted in said Addition.



- NOTES:**
- TOTAL DETENTION STORAGE INDICATED = 11.3 AC. FT. @ ELEV. 84.6 (1272.0 M.S.L.) NOT INCLUDING CHANNEL STORAGE EAST OF WATER CIRCLE
  - DEVELOPMENT OF THE SOUTH PART OF PARCEL B (11.2 ACRES) WILL REQUIRE ADDITIONAL RETENTION POND VOLUME.
  - SEE ACCOMPANYING REPORT BY SRB, DATED 8-15-94.



**SRB** 924 NORTH MAIN 316-264-8008  
 WICHITA, KANSAS 67203 FAX 264-4621

**SAVOY, RUGGLES & BOHM, P. A.**  
 ENGINEERING & SURVEYING

E: AUGUST 15, 1994  
 FILE: 16RE.DWG