

```

*****
*
* FLOOD HYDROGRAPH PACKAGE (HEC-1) *
* MAY 1991 *
* VERSION 4.0.1E *
*
* RUN DATE 07/06/95 TIME 11:30:56 *
*
*****

```

```

*****
*
* U.S. ARMY CORPS OF ENGINEERS
* HYDROLOGIC ENGINEERING CENTER
* 609 SECOND STREET
* DAVIS, CALIFORNIA 95616
* (916) 551-1748
*
*****

```

```

X X XXXXXXX XXXX X
X X X X X XX
X X X X X
XXXXXXXX XXXX X XXXX X
X X X X X
X X X X X
X X XXXXXXX XXXX XXX

```

THIS PROGRAM REPLACES ALL PREVIOUS VERSIONS OF HEC-1 KNOWN AS HEC1 (JAN 73), HEC1GS, HEC1DB, AND HEC1KW.

THE DEFINITIONS OF VARIABLES -RTIMP- AND -RTIOR- HAVE CHANGED FROM THOSE USED WITH THE 1973-STYLE INPUT STRUCTURE. THE DEFINITION OF -AMSK- ON RM-CARD WAS CHANGED WITH REVISIONS DATED 28 SEP 81. THIS IS THE FORTRAN77 VERSION
 NEW OPTIONS: DAMBREAK OUTFLOW SUBMERGENCE , SINGLE EVENT DAMAGE CALCULATION, DSS:WRITE STAGE FREQUENCY,
 DSS:READ TIME SERIES AT DESIRED CALCULATION INTERVAL LOSS RATE:GREEN AND AMPT INFILTRATION
 KINEMATIC WAVE: NEW FINITE DIFFERENCE ALGORITHM

PEPPERMINT PARK
 FOR VICKI

LINE	ID.....1.....2.....3.....4.....5.....6.....7.....8.....9.....10
1	ID PEPPERMINT PARK
2	ID EXISTING CONDITION
3	ID Q100 - 6HR STORM
4	ID FILE: PEPPER
5	IT 2 0 300
6	IO 5 0
7	KK SB1
8	KO 21
9	KM COMPUTE THE RUN OFF HYDROGRAPH
10	BA .625
11	PH 100 0 .87 1.86 3.8 4.6 5.1 6.0
12	LS 0 78.4
13	UD 3.21
14	ZZ

 *
 * FLOOD HYDROGRAPH PACKAGE (HEC-1) *
 * MAY 1991 *
 * VERSION 4.0.1E *
 *
 * RUN DATE 07/06/95 TIME 11:30:56 *
 *

 *
 * U.S. ARMY CORPS OF ENGINEERS
 * HYDROLOGIC ENGINEERING CENTER
 * 609 SECOND STREET
 * DAVIS, CALIFORNIA 95616
 * (916) 551-1748
 *

PEPPERMINT PARK
 EXISTING CONDITION
 Q100 - 6HR STORM
 FILE: PEPPER

6 IO OUTPUT CONTROL VARIABLES

IPRNT 5 PRINT CONTROL
 IPLOT 0 PLOT CONTROL
 QSCAL 0. HYDROGRAPH PLOT SCALE

IT HYDROGRAPH TIME DATA

NMIN 2 MINUTES IN COMPUTATION INTERVAL
 IDATE 1 0 STARTING DATE
 ITIME 0000 STARTING TIME
 NQ 300 NUMBER OF HYDROGRAPH ORDINATES
 NDDATE 1 0 ENDING DATE
 NDTIME 0958 ENDING TIME
 ICENT 19 CENTURY MARK

COMPUTATION INTERVAL 0.03 HOURS
 TOTAL TIME BASE 9.97 HOURS

ENGLISH UNITS

DRAINAGE AREA SQUARE MILES
 PRECIPITATION DEPTH INCHES
 LENGTH, ELEVATION FEET
 FLOW CUBIC FEET PER SECOND
 STORAGE VOLUME ACRE-FEET
 SURFACE AREA ACRES
 TEMPERATURE DEGREES FAHRENHEIT

*** **

7 KK

* *
 * SBI *
 * *

8 KO

OUTPUT CONTROL VARIABLES

IPRNT 5 PRINT CONTROL
 IPLOT 0 PLOT CONTROL

QSCAL	0.	HYDROGRAPH PLOT SCALE
IPNCH	0	PUNCH COMPUTED HYDROGRAPH
IOUT	21	SAVE HYDROGRAPH ON THIS UNIT
ISAV1	1	FIRST ORDINATE PUNCHED OR SAVED
ISAV2	300	LAST ORDINATE PUNCHED OR SAVED
TIMINT	0.033	TIME INTERVAL IN HOURS

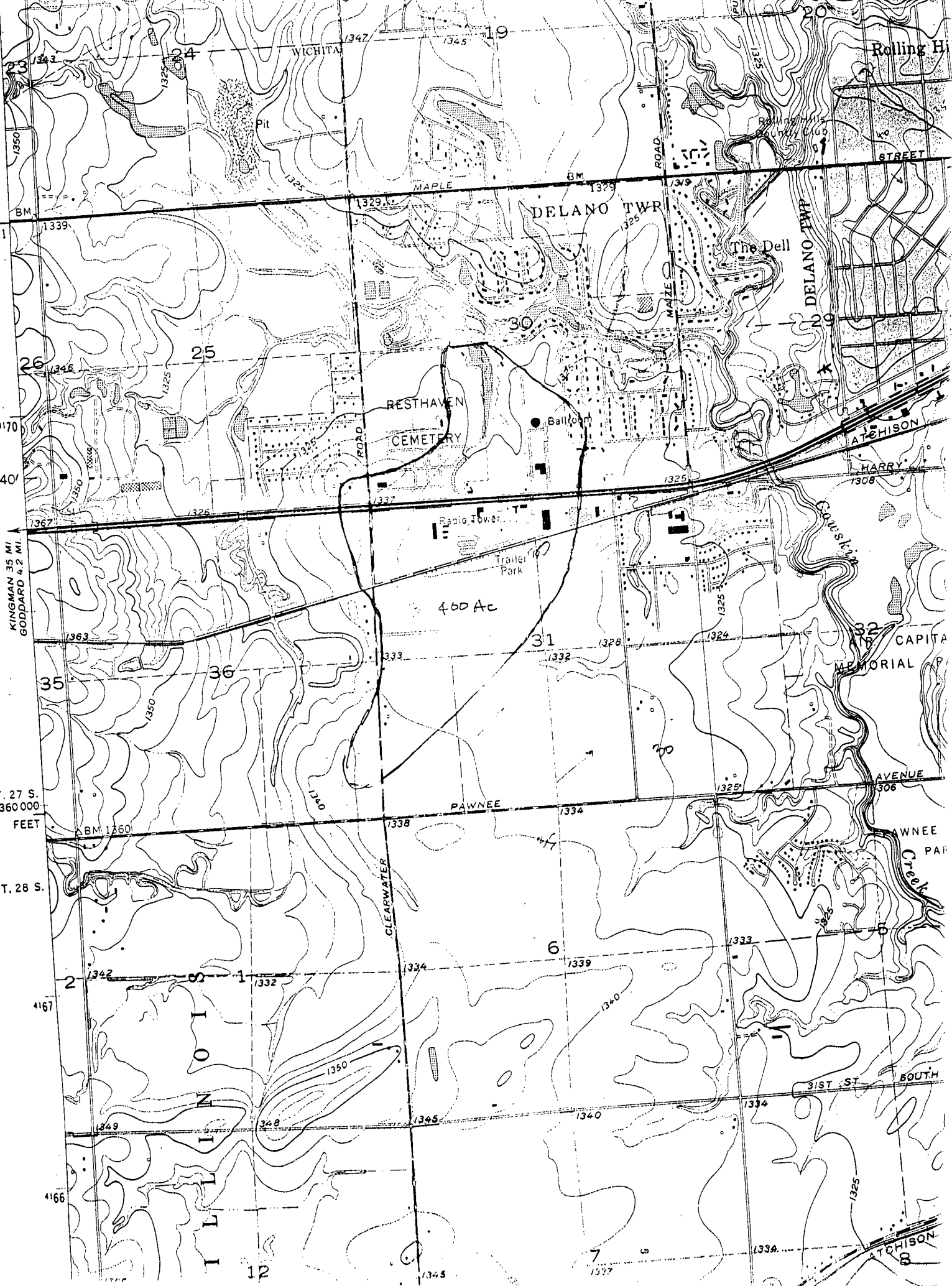
*** WARNING *** UNIT HYDROGRAPH TRUNCATED FROM 483 TO 300 INTERVALS

RUNOFF SUMMARY
FLOW IN CUBIC FEET PER SECOND
TIME IN HOURS, AREA IN SQUARE MILES

OPERATION	STATION	PEAK FLOW	TIME OF PEAK	AVERAGE FLOW FOR MAXIMUM PERIOD			BASIN AREA	MAXIMUM STAGE	TIME OF MAX STAGE
				6-HOUR	24-HOUR	72-HOUR			
HYDROGRAPH AT	SB1	311.	6.57	211.	129.	129.	0.63		

*** NORMAL END OF HEC-1 ***

6459 II NE (GODDARD)



KINGMAN 35 MI
GODDARD 4.2 MI.

T. 27 S.
360 000
FEET

T. 28 S.

4167

4166

12

1345

1337

1334

1325

1308

1306

1325

1325

1325

1325

1325

1325

1325

1325

1325

1325

1325

1325

1325

1325

1325

1325

1325

1325

1325

1325

1325

1325

1325

1325

1325

1325

1325

1325

1325

1325

1325

1325

1325

1325

1325

1325

1325

1325

1325

1325

1325

1325

1325

1325

1325

1325

1325

1325

1325

1325

1325

1325

1325

1325

1325

1325

1325

1325

1325

1325

1325

1325

1325

1325

1325

1325

1325

1325

1325

1325

1325

1325

1325

1325

1325

1325

1325

1325

1325

1325

1325

1325

1325

1325

1325

1325

1325

1325

1325

1325

1325

1325

1325

1325

1325

1325

1325

1325

1325

1325

1325

1325

1325

1325

1325

1325

1325

1325

1325

1325

1325

1325

1325

1325

1325

1325

1325

1325

1325

1325

1325

1325

1325

1325

1325

1325

1325

1325

1325

1325

1325

1325

1325

1325

1325

1325

1325

1325

1325

1325

1325

1325

1325

1325

1325

1325

1325

1325

1325

1325

1325

1325

1325

1325

1325

1325

1325

1325

1325

1325

1325

1325

1325

1325

1325

1325

1325

1325

1325

1325

1325

1325

1325

1325

1325

1325

1325

1325

1325

1325

1325

1325

1325

1325

1325

1325

1325

1325

1325

1325

1325

1325

1325

1325

1325

1325

1325

1325

1325

1325

1325

1325

1325

1325

1325

1325

1325

1325

1325

1325

1325

1325

1325

1325

1325

1325

1325

1325

1325

1325

1325

1325

1325

1325

1325

1325

1325

1325

1325

1325

1325

1325

1325

1325

1325

1325

1325

1325

1325

1325

1325

1325

1325

1325

1325

1325

1325

1325

1325

1325

1325

1325

1325

1325

1325

1325

1325

1325

1325

1325

1325

1325

1325

1325

1325

1325

1325

1325

1325

1325

1325

1325

1325

1325

1325

1325

1325

1325

1325

1325

1325

1325

1325

1325

1325

1325

1325

1325

1325

1325

1325

1325

1325

1325

1325

1325

1325

1325

1325

1325

1325

7-6-95

PEPPERMIAT PARK - DRAINAGE FROM SOUTH

400 AC D.A.

SEC 30

SEC 31

SOIL TYPE Ba Bb

Ta Wb

HYD GROUP C

HYD GROUP D

150 AC C CEMETERY CN=74 11100

250 AC D CULT. LAND CN=81 20250

31350 ÷ 400 = 78.4

COMPOSITE CN = 78.4

$$L = \frac{8100^{0.8} (2.76)^{0.7}}{1900^{0.2} 0.5^{0.5}} = 3.21 \text{ HR.}$$

7-6-95

CAPACITY

PEPPERMINA - 3-48" ZCP UNDER DRIVE

HEAD WATER 8'

ASSUME INLET CONTROL

$$H_w/D = 2$$

$$Q = 142 \text{ cfs PER PIPE}$$

$$142 \times 3 = 426 \text{ cfs}$$

7-6-95

PEPPERMINT PARK - WATER EXTENSION
SEWER EXTENSION

TL, ROB YUKKIN

PEPPERMINT PARK - ADDITION IS 46000 TO 9
LOTS OR \$5111/LOT. NEED 200' EXTENSION TO
SERVE PEPPERMINT PARK.

$$\begin{array}{r} 200' \times \$25 = 5000 \\ FH \quad \quad \quad 1500 \\ \hline \quad \quad \quad 2000 \end{array}$$

ENGR, ADMIN, MAP

\$8500

TOTAL WATER PETITION

$$350' \times \$25 = 8750$$

$$1 \text{ MANHOLE @ } \$2500 \quad \underline{2500}$$

11250

$$30\% \quad \underline{3375}$$

14625

USE \$15000

7-6-95

PEPPERMINT PARK - PAVING CUR-DE-SAC

$$\pi 33.0^2 \div 9 \times \$30 = 11404$$

USE \$12000

DRAINAGE IMPROVEMENTS

$$270' \ 44'' \text{ RCP} \times 75 \ 22850$$

20%

26325

\$26500.00