

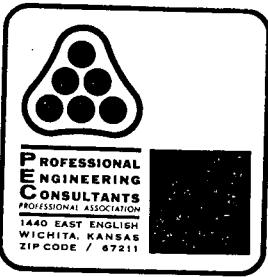
PROFESSIONAL
ENGINEERING
CONSULTANTS
PROFESSIONAL ASSOCIATION

DRAINAGE PLAN
AND
SUPPORTING CALCULATIONS

FOR
REFLECTION RIDGE COMMERCIAL
AN ADDITION TO WICHITA, SEDGWICK COUNTY, KANSAS

PREPARED BY
PROFESSIONAL ENGINEERING CONSULTANTS, P.A.
ENGINEERS
WICHITA, KANSAS

OCTOBER 23, 1987



Date 10.23.87 Page 1 of 4
Project Reflection Ridge Commercial
Item Drainage Plan.

Introduction

Reflection Ridge Commercial Addition is located on the northwest corner of Ridge Rd + 21st St. It is a portion of the overall Reflection Ridge project which is generally in the south half of Section 4, T26S, R1W.

At the present time, approximately 85.4 Acres of pasture drains from west to east, discharging into the west ditch of Ridge Road. The proposed conditions indicate that the majority of this drainage area will be intercepted via Phase I streets, storm sewers (now being designed) which will empty into ponds located within the proposed golf course. (See Reflection Ridge Drainage Plan dated 7.31.87).

The reduced area of approximately 24.7 Acres will continue to drain toward Ridge Road as shown on the Reflection Ridge Commercial Drainage Plan.



Date 10.23.87 Page 2 of 4
 Project Reflection Ridge Commercial
 Item Drainage Plan

I. HYDROLOGY - EXISTING CONDITIONS

Use Rational Formula $Q = CIA$.

1. Determine " C_{100} " (Land use = ag. pasture)

Soil Type	Hyd. Group	C_{100}	X
45% Sa	B	0.43	0.1935
15% Ba	C	0.55	0.0825
40% Fa	B	0.43	0.1720

composite " C_{100} " = 0.448

2. Determine " I_{100} "

Determine to: Overland Flow
 Land Slope = $\frac{1357 - 1327}{2660} = 1.13\%$
 Land Use = short grass pasture
 overland Flow Velocity = 0.30 fps
 1000' overland flow @ 0.30 fps = 55 min
 1700' "channelized flow" @ 2fps = 14 min

$I_{100} = 3.45$

3. Determine "A"

Planimeter $0.939^a = 85.4 \text{ Ac.}$

4. Determine " Q_{100} "

$Q_{100} = C_{100} I_{100} A = 0.448 \times 3.45 \times 85.4 = 132 \text{ cfs}$



Date 10.23.87 Page 3 of 4

Project Reflection Ridge Commercial

Item Drainage Plan.

II HYDROLOGY - PROPOSED CONDITIONS

Use Rational Method $Q = c IA$

1. Determine "c"

soil type	Hyd. Group	Land Use	C_{100}	%	
Fa	B	Res. $\frac{1}{4}$ Ac.	0.61	6	0.0366
Fa	B	Golf Course	0.41	36	0.1476
Fa	B	Commercial	0.90	36	0.3240
Fa	B	Office	0.70	22	0.1540
				<u>100</u>	
composite				" C_{100} " =	0.6622

2. Determine " I_{100} "

Determine t_c : Overland Flow
 200' @ $\approx 1\%$ open space = $200 / 0.28 \text{ fps} = 11.9$
 1000' channelized flow @ 2fps = $500 \text{ sec} = 8.2$
20.1 min

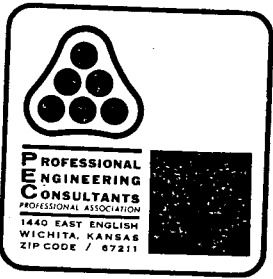
$I_{100} = 6.53$

3. Determine "A"

Planimeter $107.6 \text{ sq}'' = 1,076,000 \text{ sq}' = 24.7 \text{ Ac.}$

4. Determine " Q_{100} "

$Q_{100} = C_{100} I_{100} A = 0.6622 \times 6.53 \times 24.7 = 106.8 \text{ cfs.}$



Date 10.23.87 Page 4 of 4
Project Reflection Road Commercial
Item Drainage Plan

SUMMARY

	<u>t_c</u>	<u>C_{100}</u>	<u>I_{100}</u>	<u>A</u>	<u>Q_{100}</u>
1. Existing Conditions:	69 min	0.44	3.45	85.4	132 [±]
2. Proposed Conditions:	20 min	0.66	6.53	24.7	107 [±]

The proposed runoff of 107 cfs will be conveyed to existing streets, streams, etc. via drives, flumes, ditches, private storm water sewers, and/or other approved drainage facilities depending on final development concepts for the subject plat.

STATE OF KANSAS

27'30" 636

637

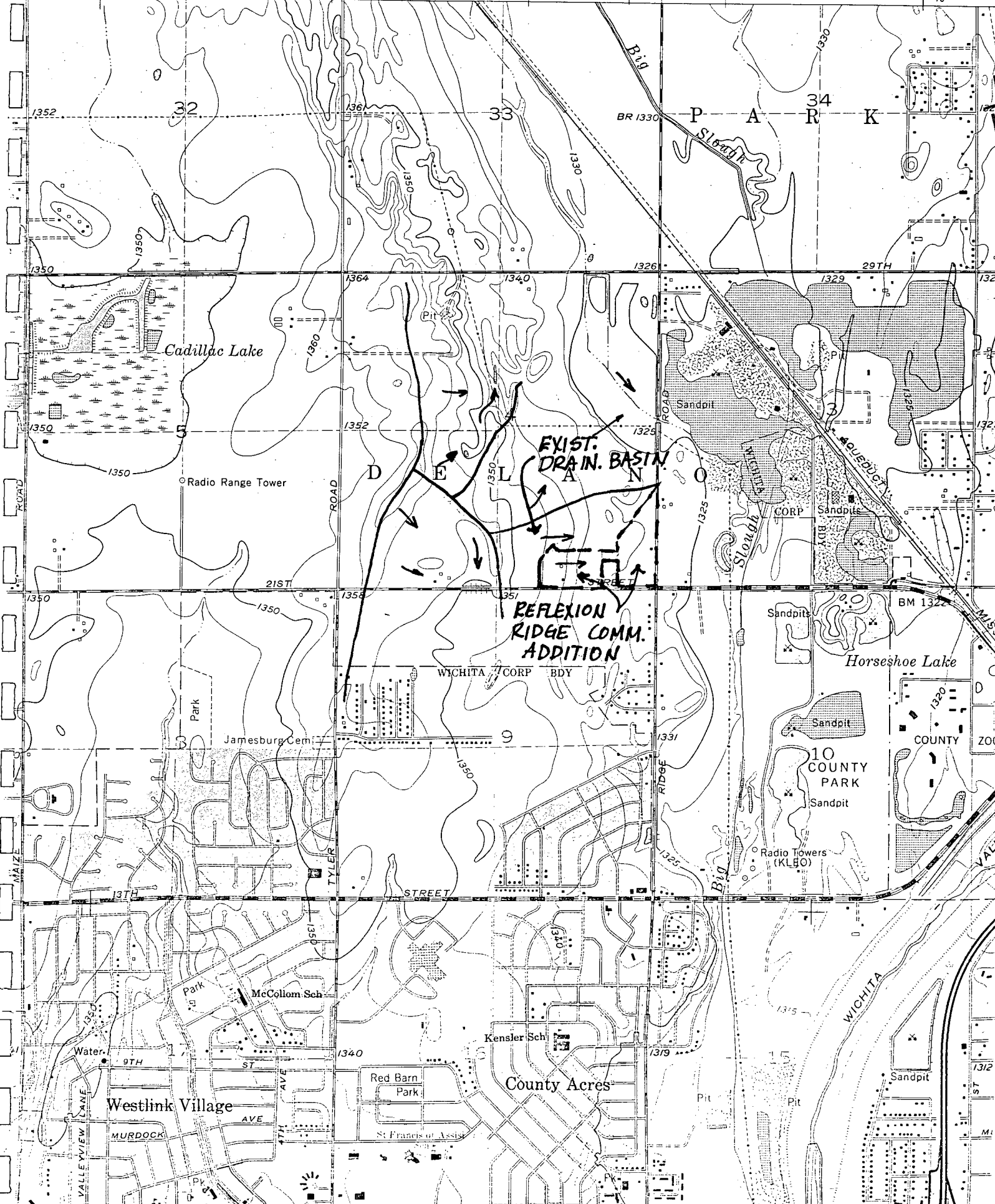
6559 IV SW
(MAIZE)

638

SEDGWICK 12 31.

25'

640



Cadillac Lake

Radio Range Tower

EXIST. DRAIN. BASIN

REFLEXION
RIDGE COMM.
ADDITION

WICHITA CORP BDY

Horseshoe Lake

10 COUNTY PARK

Westlink Village

County Acres

WICHITA

EXHIBIT NO. 1

SOIL LEGEND

<u>SYMBOL</u>	<u>HYDROLOGIC GROUP</u>	<u>NAME</u>
Aa	B	Albion-Shellabarger sandy loams, 1 to 4 percent slopes
Ab	B	Albion and Shellabarger sandy loams, 7 to 15 percent slopes
Ba	C	Blanket silt loam, 0 to 1 percent slopes
Bb	C	Blanket silt loam, 1 to 3 percent slopes
Ca	B	Canadian fine sandy loam
Cb	B	Canadian-Waldeck fine sandy loams
Cc	D	Carwile fine sandy loam
Cd	B	Clark-Ost clay loams, 1 to 4 percent slopes
Ce	C	Cline silty clay, 3 to 6 percent slopes
Ea	B	Elandco silt loam
Eb	B	Elandco silt loam, occasionally flooded
Ec	B	Elandco silt loam, frequently flooded
Fa	B	Farnum loam, 0 to 1 percent slopes
Fb	B	Farnum loam, 1 to 3 percent slopes
Fc	B	Farnum loam, sandy substratum, 0 to 1 percent slopes
Ga	D	Goessel silty clay, 0 to 1 percent slopes
Gb	D	Goessel silty clay, 1 to 2 percent slopes
Ia	D	Irwin silty clay loam, 1 to 3 percent slopes
Ib	D	Irwin silty clay loam, 3 to 6 percent slopes
Ic	D	Irwin silty clay loam, 2 to 6 percent slopes, eroded
La	C	Lesho loam
Lb	A	Lincoln soils
Ma	B	Milan loam, 1 to 3 percent slopes
Mb	B	Milan form, 3 to 6 percent slopes
Mc	B	Milan clay loam, 2 to 6 percent slopes, eroded
Na	B	Naron fine sandy loam
Oc	D	Owens clay loam, 1 to 3 percent slopes
Od	D	Owens-Rock outcrop complex, 3 to 10 percent slopes
Pa		Pits
Pb	D	Plevna fine sandy loam
Pc	A	Pratt loamy fine sand, undulating
Pd	A	Pratt-Tivoli complex, rolling
Ra	D	Renfrow silty clay loam, 1 to 3 percent slopes
Rb	D	Renfrow silty clay loam, 3 to 6 percent slopes
Rc	D	Renfrow-Owens clay loams, 1 to 4 percent slopes
Rd	D	Rosehill silty clay, 1 to 3 percent slopes
Sa	B	Shellabarger sandy loam, 1 to 3 percent slopes
Sb	B	Shellabarger sandy loam, 3 to 6 percent slopes
Sc	B	Shellabarger sandy loam, 3 to 6 percent slopes, eroded
Ta	D	Tabler silty clay loam
Tb	D	Tabler-Drummond complex
Ua	B	Urban land-Canadian complex
Ub	B	Urban land-Elandco complex
Uc	B	Urban land-Farnum complex, 0 to 3 percent slopes
Ud	D	Urban land-Irwin complex, 1 to 3 percent slopes
Ue	D	Urban land-Tabler complex
Va	B	Vanoss silt loam, 0 to 1 percent slopes
Vb	B	Vanoss silt loam, 1 to 3 percent slopes
Vc	B	Vanoss silt loam, 3 to 6 percent slopes
Vd	B	Vanoss silt loam, 3 to 6 percent slopes, eroded
Ve	D	Vernon sandy loam, 1 to 3 percent slopes
Vf	D	Vernon sandy loam, 3 to 6 percent slopes
Wa	C	Waldeck sandy loam
Wb	D	Waurika silt loam

ATTACHMENT D

DRAINAGE CRITERIA

CITY OF WICHITA, KANSAS

RECOMMENDED RUNOFF COEFFICIENTS FOR RATIONAL METHOD
AND PERCENT IMPERVIOUS FOR UNIT HYDROGRAPH METHOD

Land Use or Surface Characteristics	Percent Impervious	Frequency			
		2	5	10	100
1. Business:					
Downtown Areas	95	0.84	0.85	0.87	0.91
Neighborhood Areas	70	0.68	0.69	0.73	0.80
2. Residential:					
<u>Single Family (Soil Group D)</u>					
1/8 Acre	50	0.57	0.61	0.66	0.79
1/4 Acre	38	0.50	0.54	0.62	0.76
1/3 Acre	30	0.46	0.50	0.59	0.73
1/2 Acre	25	0.42	0.48	0.56	0.72
3/4 Acre	22	0.42	0.46	0.55	0.71
1 Acre	20	0.41	0.45	0.54	0.71
<u>Multi-Family (Soil Group D)</u>					
Multi-Unit (detached)	60	0.62	0.66	0.72	0.82
Multi-Unit (attached)	65	0.64	0.68	0.73	0.83
Apartments	75	0.70	0.73	0.79	0.86
<u>Single Family (Soil Group C)</u>					
1/8 Acre	50	0.55	0.58	0.64	0.73
1/4 Acre	38	0.48	0.51	0.57	0.68
1/3 Acre	30	0.43	0.46	0.53	0.65
1/2 Acre	25	0.40	0.43	0.50	0.63
3/4 Acre	22	0.39	0.42	0.49	0.62
1 Acre	20	0.37	0.40	0.48	0.61
<u>Multi-Family (Soil Group C)</u>					
Multi-Unit (detached)	60	0.60	0.63	0.69	0.77
Multi-Unit (attached)	65	0.63	0.66	0.71	0.79
Apartments	75	0.68	0.72	0.77	0.83
<u>Single-Family (Soil Group B)</u>					
1/8 Acre	50	0.52	0.54	0.59	0.67
1/4 Acre	38	0.44	0.46	0.52	0.61
1/3 Acre	30	0.39	0.41	0.47	0.57
1/2 Acre	25	0.36	0.38	0.44	0.54
3/4 Acre	22	0.34	0.36	0.42	0.52
1 Acre	20	0.33	0.35	0.40	0.51
<u>Multi-Family (Soil Group B)</u>					
Multi-Unit (detached)	60	0.58	0.60	0.65	0.72
Multi-Unit (attached)	65	0.61	0.64	0.68	0.75
Apartments	75	0.67	0.70	0.74	0.80

Land Use or Surface Characteristics	Percent Impervious	Frequency			
		<u>2</u>	<u>5</u>	<u>10</u>	<u>100</u>
<u>Single Family (Soil Group A)</u>					
1/8 Acre	50	0.47	0.50	0.54	0.60
1/4 Acre	38	0.39	0.41	0.45	0.52
1/3 Acre	30	0.33	0.35	0.39	0.47
1/2 Acre	25	0.30	0.31	0.35	0.44
3/4 Acre	22	0.28	0.29	0.33	0.42
1 Acre	20	0.26	0.28	0.32	0.40
<u>Multi-Family (Soil Group A)</u>					
Multi-Unit (detached)	60	0.55	0.57	0.61	0.67
Multi-Unit (attached)	65	0.58	0.60	0.64	0.70
Apartments	75	0.65	0.68	0.72	0.77
3. Industrial:					
Light Areas	70	0.68	0.69	0.73	0.80
Heavy Areas	80	0.74	0.76	0.79	0.84
4. Playgrounds:					
	15	0.33	0.35	0.42	0.55
5. Schools:					
	40	0.49	0.51	0.56	0.66
6. Railroad Yard Areas:					
	30	0.43	0.45	0.50	0.62
7. Undeveloped Urban Areas: Offsite Flow Analysis (when land use not defined)					
	45	0.52	0.54	0.59	0.68
8. Streets:					
Paved	99	0.87	0.88	0.90	0.93
Gravel	00	0.24	0.26	0.33	0.48
9. Drive, Parking Lots and Walks:					
	96	0.87	0.87	0.88	0.89
10. Roofs:					
	90	0.80	0.85	0.90	0.93
11. Urban Lawn Areas (See Note No. 1 below):					
<u>Soil Group A</u>					
Slope less than 1%	00	0.08	0.09	0.13	0.23
Slope 1% to 4%	00	0.12	0.13	0.17	0.27
Slope more than 4%	00	0.16	0.17	0.21	0.31
<u>Soil Group B</u>					
Slope less than 1%	00	0.16	0.18	0.24	0.37
Slope 1% to 4%	00	0.20	0.22	0.28	0.41
Slope more than 4%	00	0.24	0.26	0.32	0.45
<u>Soil Group C</u>					
Slope less than 1%	00	0.24	0.27	0.35	0.51
Slope 1% to 4%	00	0.26	0.29	0.37	0.53
Slope more than 4%	00	0.28	0.31	0.39	0.55

Land Use or
Surface Characteristics

Percent
Impervious

Frequency

Soil Group D

		<u>2</u>	<u>5</u>	<u>10</u>	<u>100</u>
Slope less than 1%	00	0.28	0.33	0.43	0.63
Slope 1% to 4%	00	0.30	0.35	0.45	0.65
Slope more than 4%	00	0.32	0.37	0.47	0.67

Note No. 1: Coefficients shown in the above table are for pervious open space areas with thick turf which includes pervious areas in parks and cemeteries. Coefficients shown above must be increased 0.02 for use with agricultural pasture areas. Coefficients shown above must be reduced by 0.04 for use with agricultural cultivated areas. Group A soils are well-drained, coarse textured sands with high infiltration rates. Group B soils are moderately well-drained, moderately coarse textured soils with moderate infiltration rates. Group C soils are moderately poor-drained, moderately fine textured soils with slow infiltration rates. Group D soils are poor-drained, fine textured soils with very slow infiltration rates.

GENERAL NOTE: These Rational Formula Coefficients may not be valid for basins 320 acres or larger.

ATTACHMENT E

DRAINAGE CRITERIA

CITY OF WICHITA, KANSAS

AVERAGE OVERLAND FLOW VELOCITY FOR USE WITH URBANIZED AREAS

Surface Type	VELOCITY IN FEET/SECOND FOR SLOPES IN PERCENT SHOWN																			
	0.1	0.2	0.3	0.4	0.5	0.6	0.7	0.8	0.9	1.0	2.0	3.0	4.0	5.0	6.0	7.0	8.0	9.0	10.0	20.0
Forest with Heavy Ground Litter or Meadow	0.03	0.04	0.06	0.07	0.08	0.09	0.10	0.11	0.12	0.13	0.16	0.21	0.28	0.33	0.39	0.46	0.53	0.60	0.72	1.10
Fallow or Minimum Tillage Cultivation	0.06	0.08	0.10	0.12	0.13	0.14	0.16	0.17	0.18	0.19	0.29	0.40	0.51	0.66	0.78	0.91	1.05	1.20	1.44	2.10
Short Grass Pasture or Lawns	0.09	0.13	0.15	0.18	0.20	0.21	0.23	0.25	0.26	0.28	0.45	0.60	0.77	0.96	1.17	1.33	1.50	1.68	1.98	3.20
Almost Bare Ground	0.16	0.22	0.28	0.31	0.35	0.38	0.41	0.44	0.46	0.49	0.70	0.85	1.05	1.26	1.50	1.75	2.03	2.32	2.79	4.40
Grassed Waterway	0.35	0.48	0.58	0.67	0.77	0.84	0.91	0.98	1.05	1.12	1.54	1.82	2.10	2.38	2.78	3.20	3.66	4.14	4.56	7.00
Paved Areas (Sheet Flow) or Shallow Gutter Flow	0.44	0.62	0.77	0.91	1.05	1.12	1.19	1.26	1.33	1.40	2.00	2.55	3.20	3.83	4.41	5.04	5.70	6.00	6.20	9.00

April 15, 1986

ATTACHMENT A
DRAINAGE CRITERIA MANUAL

CITY OF WICHITA, KANSAS

RAINFALL INTENSITY TABLE FOR SEDGWICK COUNTY, KANSAS

The following tabulation contains rainfall intensity in inches per hour as derived from ESSA Weather Bureau Technical Paper 40 Modified to NWS Hydro-35, 1977 During First Hour

DURATION IN MINUTES	RETURN PERIODS OF						
	1-YR	2-YR	5-YR	10-YR	25-YR	50-YR	100-YR
5	4.18	5.57	6.53	7.41	8.52	9.48	10.32
6	3.99	5.32	6.25	7.09	8.16	9.09	9.89
7	3.81	5.09	5.99	6.81	7.84	8.74	9.50
8	3.66	4.89	5.75	6.55	7.55	8.42	9.15
9	3.52	4.70	5.54	6.31	7.28	8.13	8.83
10	3.39	4.52	5.34	6.09	7.04	7.86	8.54
11	3.27	4.36	5.16	5.89	6.81	7.61	8.27
12	3.18	4.21	4.99	5.71	6.60	7.38	8.02
13	3.05	4.08	4.84	5.53	6.41	7.17	7.79
14	2.96	3.95	4.69	5.37	6.23	6.97	7.57
15	2.87	3.83	4.56	5.22	6.06	6.78	7.37
16	2.78	3.72	4.43	5.08	5.90	6.60	7.18
17	2.71	3.61	4.31	4.95	5.75	6.44	7.00
18	2.63	3.51	4.20	4.83	5.61	6.29	6.84
19	2.56	3.42	4.10	4.71	5.47	6.14	6.68
20	2.50	3.33	4.00	4.60	5.35	6.00	6.53
21	2.44	3.25	3.90	4.50	5.23	5.87	6.39
22	2.38	3.17	3.81	4.40	5.12	5.75	6.26
23	2.32	3.10	3.73	4.31	5.01	5.63	6.13
24	2.27	3.03	3.65	4.22	4.91	5.52	6.01
25	2.22	2.96	3.57	4.13	4.81	5.41	5.90
26	2.20	2.90	3.50	4.05	4.72	5.31	5.79
27	2.16	2.84	3.43	3.98	4.63	5.21	5.69
28	2.14	2.78	3.37	3.90	4.55	5.12	5.59
29	2.11	2.72	3.30	3.83	4.47	5.03	5.49
30	2.08	2.67	3.24	3.76	4.39	4.94	5.40
31	2.05	2.62	3.19	3.70	4.32	4.86	5.32
32	2.02	2.57	3.10	3.63	4.25	4.79	5.22
33	1.99	2.52	3.05	3.57	4.18	4.71	5.14
34	1.96	2.48	3.01	3.51	4.11	4.63	5.07
35	1.93	2.44	2.98	3.46	4.05	4.56	5.00
36	1.91	2.39	2.93	3.41	3.99	4.50	4.93
37	1.89	2.35	2.88	3.36	3.93	4.43	4.86
38	1.87	2.32	2.84	3.31	3.87	4.37	4.79
39	1.85	2.28	2.80	3.26	3.82	4.31	4.73
40	1.83	2.24	2.76	3.22	3.76	4.25	4.66
41	1.81	2.21	2.72	3.17	3.71	4.19	4.60
42	1.79	2.18	2.68	3.13	3.66	4.13	4.54
43	1.77	2.14	2.64	3.09	3.61	4.08	4.49
44	1.75	2.11	2.61	3.05	3.57	4.03	4.43
45	1.73	2.08	2.57	3.01	3.52	3.98	4.38

ATTACHMENT A CONTINUED
Page 2

DURATION IN MINUTES	RETURN PERIODS OF						
	1-YR	2-YR	5-YR	10-YR	25-YR	50-YR	100-YR
46	1.70	2.05	2.54	2.97	3.48	3.93	4.33
47	1.67	2.02	2.50	2.93	3.44	3.88	4.28
48	1.66	2.00	2.47	2.90	3.39	3.84	4.23
49	1.64	1.97	2.44	2.86	3.35	3.79	4.18
50	1.61	1.95	2.41	2.83	3.32	3.75	4.13
51	1.59	1.92	2.38	2.79	3.28	3.71	4.09
52	1.56	1.89	2.35	2.76	3.24	3.67	4.05
53	1.54	1.86	2.33	2.73	3.20	3.63	4.00
54	1.52	1.84	2.30	2.70	3.17	3.59	3.96
55	1.50	1.81	2.27	2.67	3.14	3.55	3.92
56	1.47	1.79	2.25	2.64	3.10	3.51	3.88
57	1.45	1.76	2.22	2.61	3.07	3.48	3.84
58	1.43	1.74	2.20	2.59	3.04	3.44	3.81
59	1.42	1.72	2.18	2.56	3.01	3.41	3.77
60	1.40	1.69	2.15	2.53	2.98	3.37	3.73
61	1.38	1.67	2.13	2.51	2.95	3.34	3.70
62	1.36	1.65	2.11	2.48	2.92	3.31	3.67
63	1.34	1.63	2.09	2.46	2.89	3.28	3.63
64	1.33	1.61	2.07	2.44	2.86	3.25	3.60
65	1.31	1.59	2.05	2.41	2.84	3.22	3.57
66	1.30	1.57	2.03	2.39	2.81	3.19	3.54
67	1.28	1.56	2.01	2.37	2.79	3.16	3.51
68	1.26	1.54	1.99	2.35	2.76	3.13	3.48
69	1.25	1.52	1.97	2.33	2.74	3.10	3.45
70	1.24	1.50	1.95	2.31	2.71	3.08	3.42
71	1.22	1.49	1.93	2.28	2.69	3.05	3.39
72	1.21	1.47	1.92	2.26	2.67	3.02	3.36
73	1.20	1.46	1.90	2.25	2.64	3.00	3.34
74	1.18	1.44	1.88	2.23	2.63	2.98	3.31
75	1.17	1.43	1.86	2.21	2.61	2.95	3.29
76	1.16	1.41	1.85	2.19	2.58	2.93	3.26
77	1.15	1.40	1.83	2.17	2.55	2.90	3.24
78	1.13	1.38	1.82	2.15	2.53	2.88	3.22
79	1.12	1.37	1.80	2.14	2.50	2.86	3.19
80	1.11	1.36	1.79	2.12	2.48	2.84	3.16
81	1.10	1.34	1.77	2.10	2.46	2.82	3.13
82	1.09	1.33	1.76	2.08	2.43	2.79	3.10
83	1.08	1.32	1.74	2.06	2.41	2.76	3.07
84	1.07	1.31	1.73	2.04	2.39	2.74	3.04
85	1.06	1.30	1.72	2.02	2.37	2.71	3.01
86	1.05	1.28	1.70	2.00	2.34	2.69	2.99
87	1.04	1.27	1.69	1.99	2.32	2.66	2.96
88	1.03	1.26	1.68	1.97	2.30	2.64	2.93
89	1.02	1.25	1.68	1.95	2.28	2.62	2.91
90	1.01	1.24	1.66	1.93	2.26	2.59	2.88

ATTACHMENT A CONTINUED
Page 3

<u>DURATION IN MINUTES</u>	<u>RETURN PERIODS OF</u>						
	<u>1-YR</u>	<u>2-YR</u>	<u>5-YR</u>	<u>10-YR</u>	<u>25-YR</u>	<u>50-YR</u>	<u>100-YR</u>
91	1.00	1.23	1.65	1.92	2.24	2.57	2.86
92	1.00	1.22	1.63	1.90	2.22	2.55	2.83
93	0.99	1.21	1.62	1.89	2.20	2.53	2.81
94	0.98	1.20	1.61	1.87	2.19	2.51	2.79
95	0.97	1.19	1.59	1.85	2.17	2.49	2.76
96	0.96	1.18	1.58	1.84	2.15	2.46	2.74
97	0.96	1.17	1.57	1.82	2.13	2.44	2.72
98	0.95	1.16	1.56	1.81	2.12	2.42	2.70
99	0.94	1.15	1.54	1.80	2.10	2.41	2.67
100	0.93	1.14	1.53	1.78	2.08	2.39	2.65
101	0.93	1.13	1.52	1.77	2.07	2.39	2.65
102	0.92	1.13	1.51	1.75	2.05	2.35	2.61
103	0.91	1.12	1.50	1.74	2.04	2.33	2.59
104	0.90	1.11	1.49	1.73	2.02	2.31	2.57
105	0.90	1.10	1.47	1.72	2.01	2.30	2.55
106	0.89	1.09	1.46	1.70	1.99	2.28	2.54
107	0.88	1.09	1.45	1.69	1.98	2.26	2.52
108	0.88	1.08	1.44	1.68	1.96	2.25	2.50
109	0.87	1.07	1.43	1.67	1.95	2.23	2.48
110	0.87	1.06	1.42	1.65	1.93	2.21	2.46
111	0.86	1.06	1.41	1.64	1.92	2.20	2.45
112	0.85	1.05	1.40	1.63	1.91	2.18	2.43
113	0.85	1.04	1.39	1.62	1.89	2.17	2.41
114	0.84	1.03	1.38	1.61	1.88	2.15	2.40
115	0.84	1.03	1.37	1.60	1.87	2.14	2.38
116	0.83	1.02	1.36	1.59	1.86	2.12	2.36
117	0.82	1.01	1.36	1.58	1.84	2.11	2.35
118	0.82	1.01	1.35	1.57	1.83	2.09	2.33
119	0.81	1.00	1.34	1.56	1.82	2.08	2.32
120	0.81	0.99	1.33	1.55	1.81	2.07	2.30

<u>DURATION IN HOURS</u>	<u>RETURN PERIODS OF</u>						
	<u>1-YR</u>	<u>2-YR</u>	<u>5-YR</u>	<u>10-YR</u>	<u>25-YR</u>	<u>50-YR</u>	<u>100-YR</u>
2	0.81	0.99	1.33	1.55	1.81	2.07	2.30
3	0.59	0.72	0.97	1.13	1.32	1.51	1.68
4	0.47	0.58	0.78	0.91	1.06	1.21	1.35
5	0.40	0.49	0.66	0.77	0.89	1.02	1.14
6	0.35	0.42	0.57	0.67	0.78	0.89	0.99
8	0.28	0.34	0.46	0.53	0.62	0.71	0.79
10	0.23	0.29	0.39	0.45	0.52	0.60	0.67
12	0.20	0.25	0.33	0.39	0.45	0.52	0.58
18	0.15	0.18	0.24	0.28	0.33	0.38	0.42
24	0.12	0.15	0.20	0.23	0.27	0.31	0.34