

DRAINAGE PLAN NORTHRIDGE LAKES

AN ADDITION TO WICHITA, SEDGWICK COUNTY, KANSAS

N.E. Corner N.W. 1/4
Sec. 4, T27S, R1W
of the 6th p.m.
Fd. 1/2" I.P.

SCALE: 1"=100'

○ = IRON SET

B.S.L. = BUILDING SETBACK LINE
C.A.C. = COMPLETE ACCESS CONTROL

B.M. - CITY OF WICHITA BENCH MARK DISC, 38 FEET WEST AND 90 FEET SOUTH OF THE INTERSECTION OF THE CENTERLINES OF TYLER ROAD AND 21ST STREET NORTH.
ELEV. 1357.349 M.S.L. = 169.949 CITY DATUM

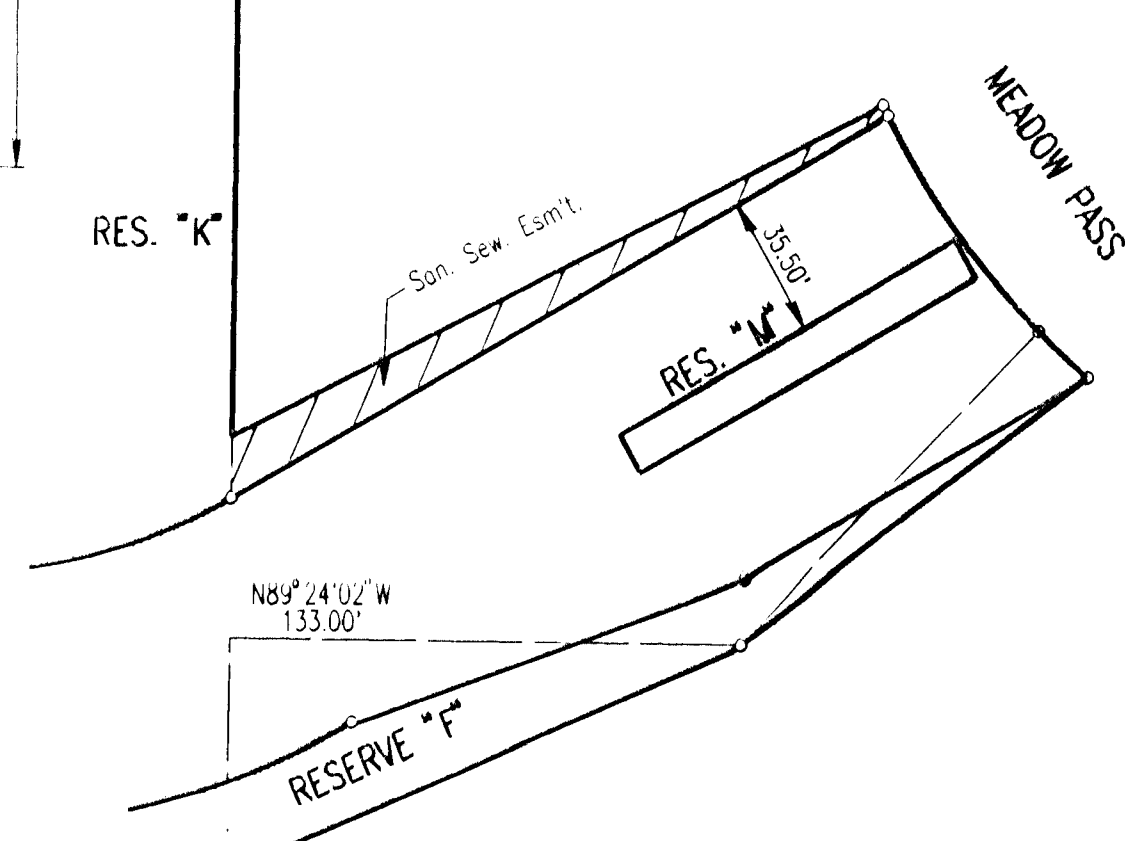
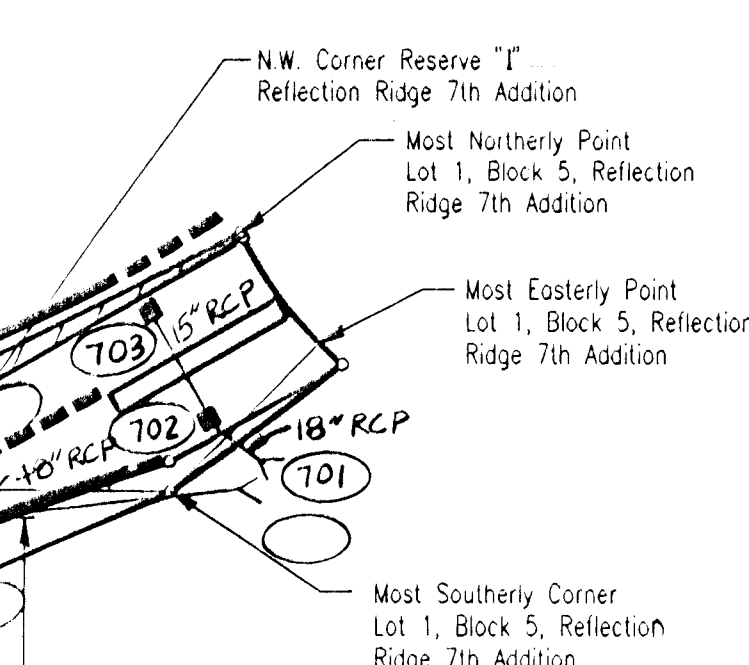
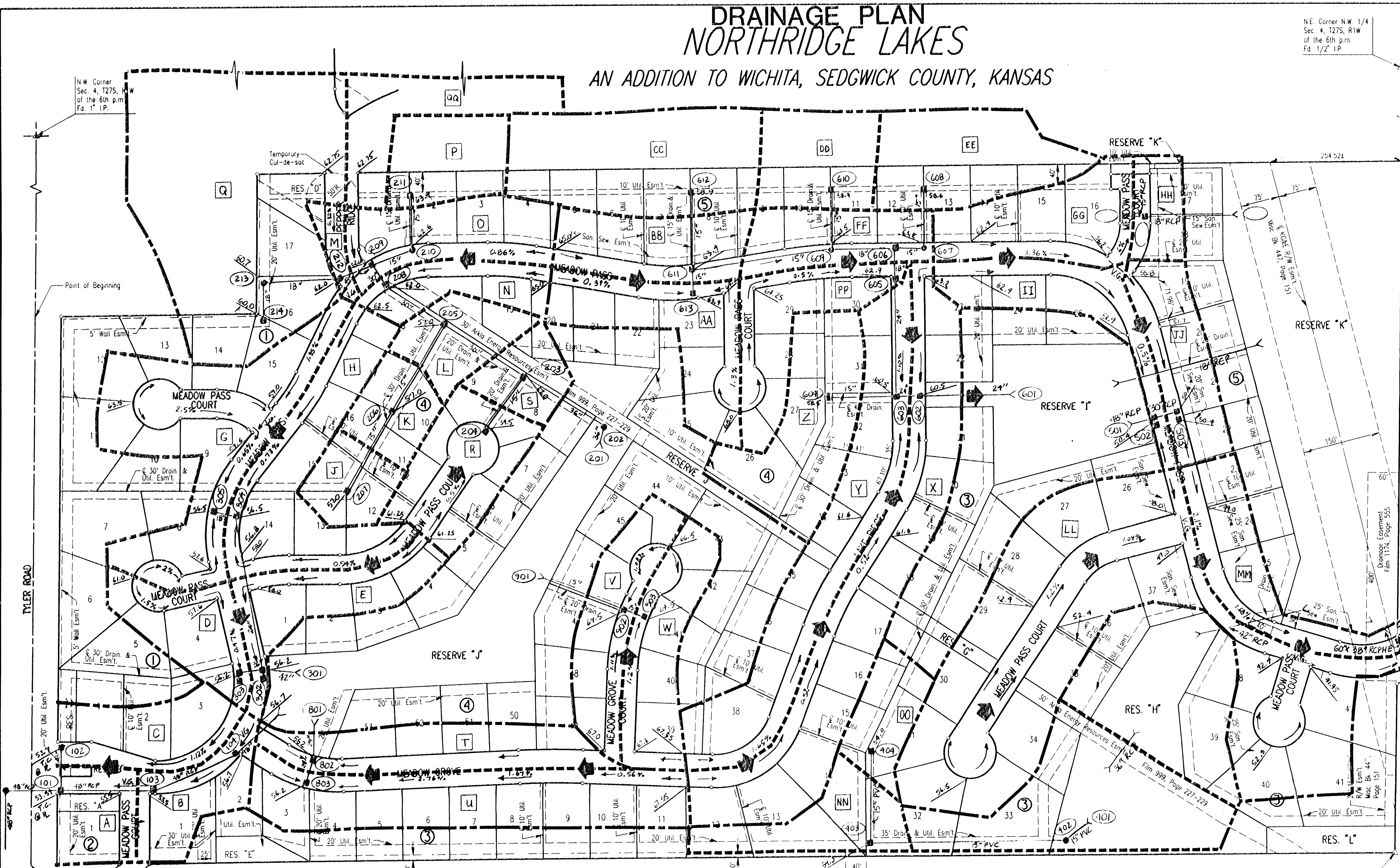
B.M. - RAILROAD SPIKE IN SOUTHWEST SIDE OF POWER POLE LOCATED 75' NORTH AND 58' EAST OF THE INTERSECTION OF THE CENTERLINES OF RIDGE ROAD AND 21ST STREET NORTH.
ELEV. 1330.70 M.S.L. = 143.30 CITY DATUM

MINIMUM PAD ELEVATION (LOWEST OPENING) AS FOLLOWS:

BLOCK 3
LOTS 20 THROUGH 27 ELEV. = 1349.5 M.S.L. = 162.1 CITY DATUM
LOTS 33, 34, 39, AND 40 ELEV. = 1350.5 M.S.L. = 163.1 CITY DATUM
LOTS 35 THROUGH 38 ELEV. = 1344.6 M.S.L. = 157.2 CITY DATUM

BLOCK 4
LOTS 1 THROUGH 9 ELEV. = 1357.0 M.S.L. = 169.6 CITY DATUM
LOTS 19 THROUGH 25 ELEV. = 1357.0 M.S.L. = 169.6 CITY DATUM
LOTS 44 THROUGH 48 ELEV. = 1357.0 M.S.L. = 169.6 CITY DATUM
LOTS 50 THROUGH 53 ELEV. = 1357.0 M.S.L. = 169.6 CITY DATUM

BLOCK 5
LOTS 17 THROUGH 25 ELEV. = 1338.4 M.S.L. = 151.0 CITY DATUM



LEGEND

- INLET
- MANHOLE
- MAJOR BASIN BOUNDARY
- - - - SUBBASIN
- A DRAINAGE BASIN DESIGNATION
- (101) STORM SEWER SYSTEM NODE
- ➔ MAJOR STORM FLOW
- ➔ MINOR STORM FLOW

CURB TYPES:
ALL COMBINED CURB & GUTTER MAY BE 3 3/8" KULL EXCEPT AS NOTED BELOW, WHICH SHALL BE 6 3/8" STANDARD COMBINED CURB & GUTTER.

STREET	LIMIT	CURB TYPE
PEPPER RIDGE	ENTIRETY	6 3/8" STD.
MEADOW PASS	ENTIRETY	6 3/8" STD.

USF / USFV/ dgm: 950541/ not logged
 date plotted: 8/22/96
 deliver to: mike berry

REVISED DRAINAGE PLAN 2-6-96 POM