

DRAINAGE PLAN

NORTHRIDGE LAKES 2ND ADDITION

TO WICHITA, SEDGWICK COUNTY, KANSAS

SCALE: 1"=40'

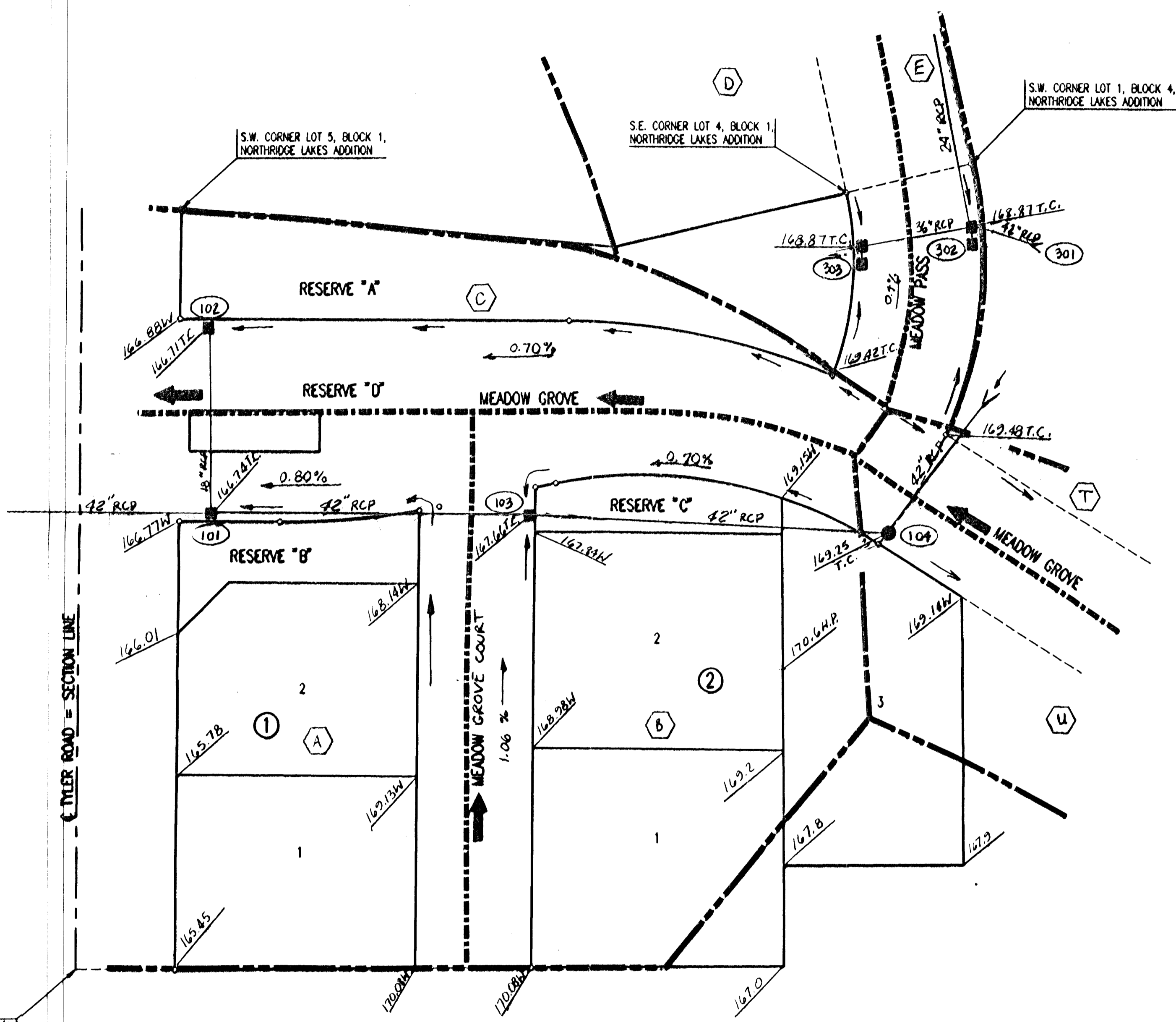
○ = IRON SET
● = IRON FOUND

C.A.C. = COMPLETE ACCESS CONTROL

B.M. - CITY OF WICHITA BENCH MARK DISC. 38 FEET WEST AND 90 FEET SOUTH OF THE INTERSECTION OF THE CENTERLINES OF TYLER ROAD AND 21ST STREET NORTH.
ELEV.=169.949 CITY DATUM
ELEV.=1387.349 M.S.L.

B.M. - RAILROAD SPIKE IN SOUTHWEST SIDE OF POWER POLE LOCATED 75' 75" NORTH AND 58' EAST OF THE INTERSECTION OF THE CENTERLINES OF RIDGE ROAD AND 21ST STREET NORTH.
ELEV.=143.30 CITY DATUM
ELEV.=1330.70 M.S.L.

S.W. CORNER N.W. 1/4 SEC. 4, T27S, R1W OF THE 6TH P.M. FOUND 1/2" I.P.



- LEGEND**
- INLET & STORM SEWER
 - MANHOLE & STORM SEWER
 - ➔ MAJOR STORM FLOW
 - ➡ MINOR STORM FLOW
 - MAJOR BASIN BOUNDARY
 - - - SUB BASIN BOUNDARY
 - (A) DRAINAGE BASIN IDENTIFIER
 - (101) STORM SEWER NODE NUMBER
 - T.C. TOP OF CURB ELEVATION (M.S.L.)
 - W WALK GRADE

REFER TO DRAINAGE PLAN DATED 2-16-96 FOR ADDITIONAL INFORMATION.

Q:\1996\196103\000\DRAIN\PLN.DWG 03-15-1996 2:28:51 pm