

# DRAINAGE PLAN

## NORTHRIDGE LAKES 2ND ADDITION

### TO WICHITA, SEDGWICK COUNTY, KANSAS

SCALE: 1"=40'

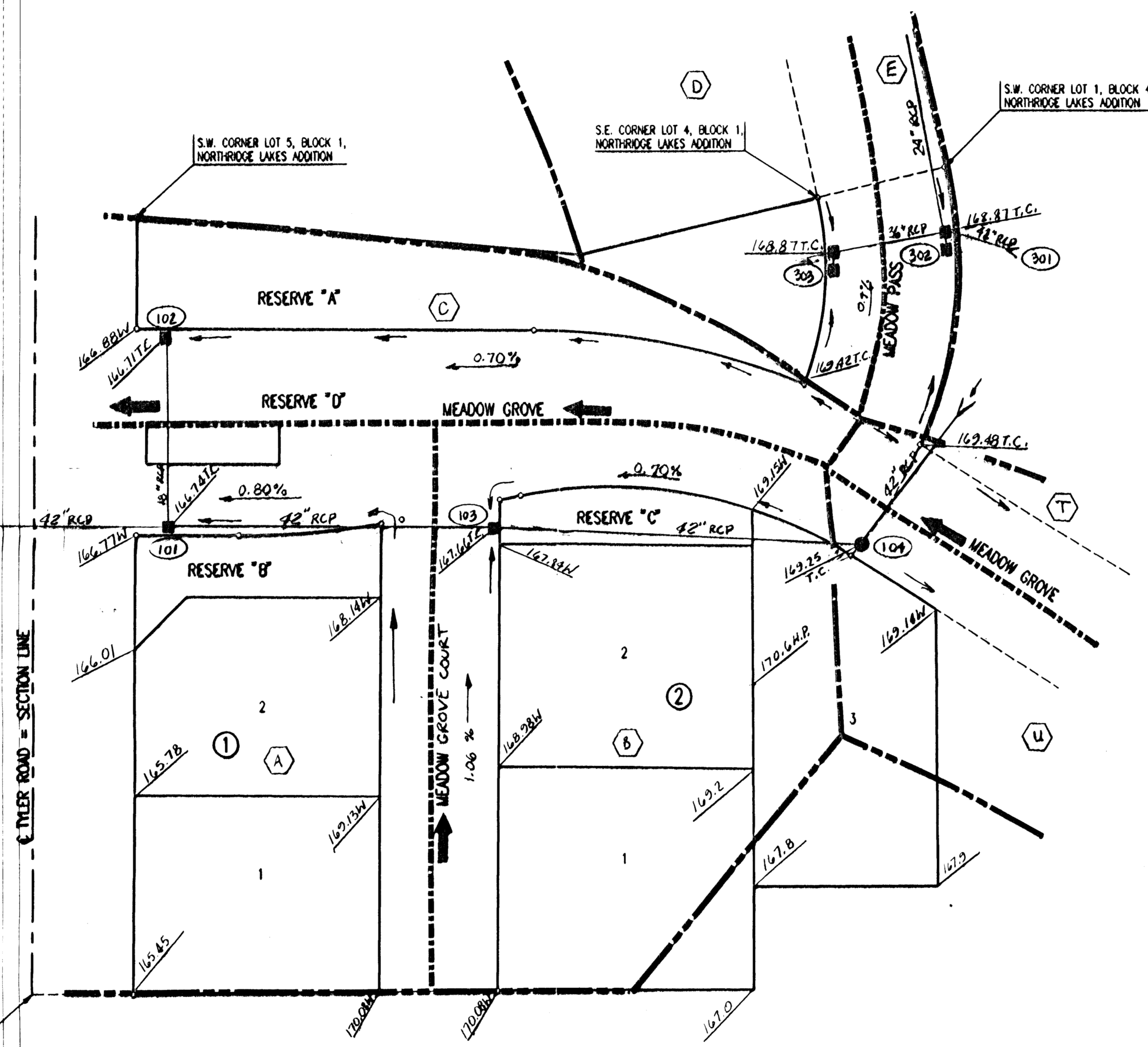
○ = IRON SET  
● = IRON FOUND

C.A.C. = COMPLETE ACCESS CONTROL

B.M. - CITY OF WICHITA BENCH MARK DISC, 38 FEET WEST AND 90 FEET SOUTH OF THE INTERSECTION OF THE CENTERLINES OF TYLER ROAD AND 21ST STREET NORTH.  
ELEV.=169.949 CITY DATUM  
ELEV.=1397.349 M.S.L.

B.M. - RAILROAD SPIKE IN SOUTHWEST SIDE OF POWER POLE LOCATED 75' 75" NORTH AND 58' EAST OF THE INTERSECTION OF THE CENTERLINES OF RIDGE ROAD AND 21ST STREET NORTH.  
ELEV.=143.30 CITY DATUM  
ELEV.=1339.70 M.S.L.

S.W. CORNER N.W. 1/4 SEC. 4, T27S, R1W OF THE 6TH P.M. FOUND 1/2" I.P.



- #### LEGEND
- INLET & STORM SEWER
  - MANHOLE & STORM SEWER
  - ➔ MAJOR STORM FLOW
  - ➡ MINOR STORM FLOW
  - MAJOR BASIN BOUNDARY
  - - - SUBBASIN BOUNDARY
  - (A) DRAINAGE BASIN IDENTIFIER
  - (101) STORM SEWER NODE NUMBER
  - T.C. TOP OF CURB ELEVATION (M.S.L.)
  - W WALK GRADE

REFER TO DRAINAGE PLAN DATED 2-16-96 FOR ADDITIONAL INFORMATION.

2/1/1996 10:05 AM DRAINPLAN.DWG 03-15-1996 2:28:51 PM

4-Cor. Elev. 7-17-96 OKC  
3013-96 PDM