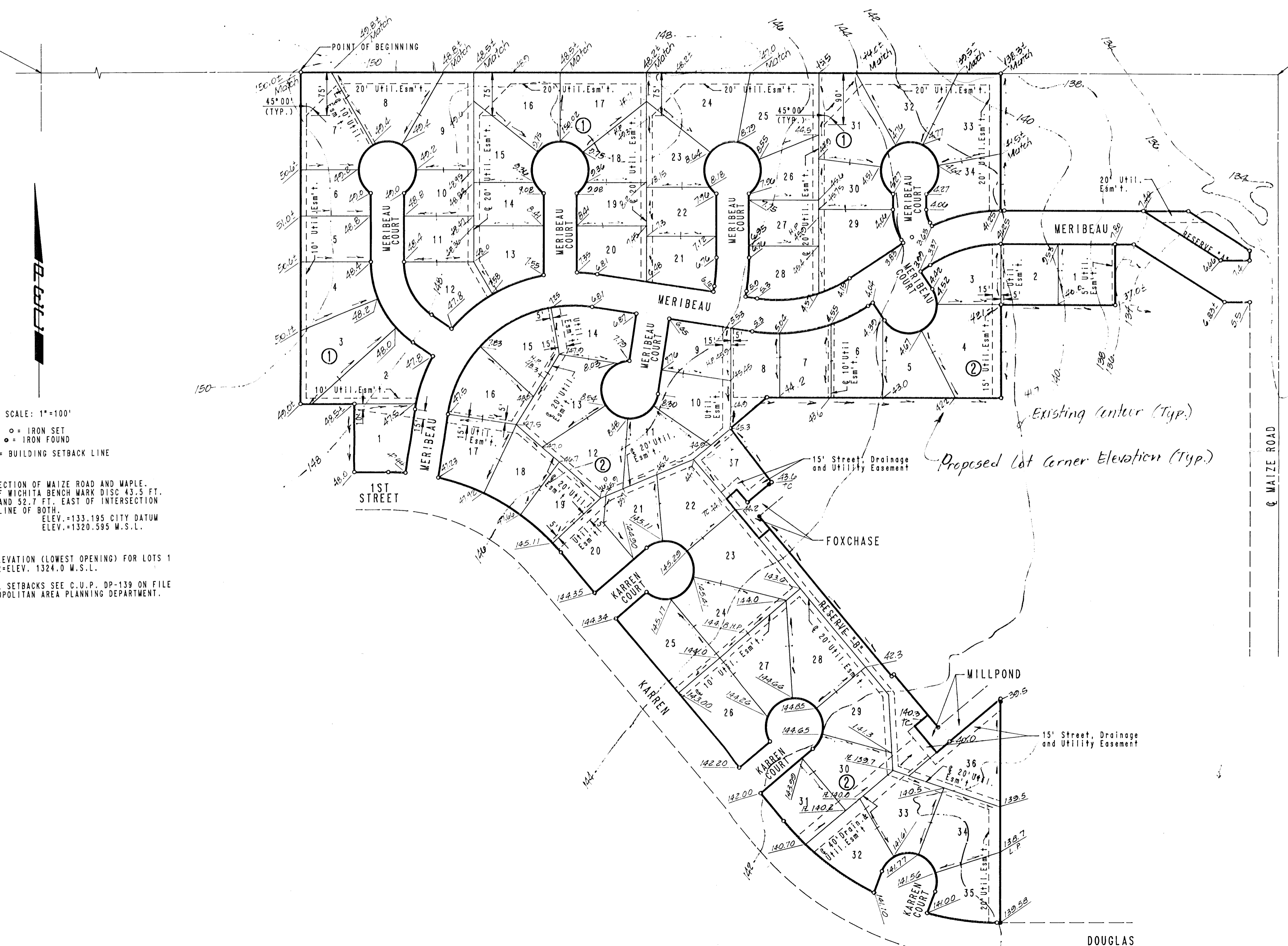


OAK CLIFF ESTATES 5TH ADDITION TO WICHITA, SEDGWICK COUNTY, KANSAS

N.W. CORNER S.E. 1/4
SEC. 19, T27S, R1W
OF THE 6TH P.M.

N.E. CORNER S.E. 1/4
SEC. 19, T27S, R1W
OF THE 6TH P.M.



SCALE: 1"=100'

○ = IRON SET
● = IRON FOUND

B.S.L. = BUILDING SETBACK LINE

B.M. - INTERSECTION OF MAIZE ROAD AND MAPLE.
CITY OF WICHITA BENCH MARK DISC 43.5 FT.
SOUTH AND 52.7 FT. EAST OF INTERSECTION
CENTERLINE OF BOTH.
ELEV. = 133.195 CITY DATUM
ELEV. = 1320.595 M.S.L.

MINIMUM PAD ELEVATION (LOWEST OPENING) FOR LOTS 1
AND 2, BLOCK 2 = ELEV. 1324.0 M.S.L.

FOR ADDITIONAL SETBACKS SEE C.U.P. DP-139 ON FILE
WITH THE METROPOLITAN AREA PLANNING DEPARTMENT.

Existing contour (Typ.)
Proposed lot corner elevation (Typ.)

**APPROVED
DRAINAGE PLAN**

DOUGLAS