

NOTES:

BENCHMARK: CITY STD. BRASS CAP IN CONC. 25' N. & 30' E. OF S. 1/4 COR. SEC. 7, T27S, R1W. ELEV. 1345.33 M.S.L.

SETBACKS AND RESERVES SHALL MEET REQUIREMENTS AS SET FORTH UNDER BRIARWOOD ESTATES C.U.P. DP-136 GENERAL PROVISIONS.

RESERVES "A" & "B", SHALL PERMIT DRAINAGE, UTILITIES CONFINED TO EASEMENTS, LANDSCAPING, PRIVATE ACCESS AND RECREATIONAL FACILITIES.

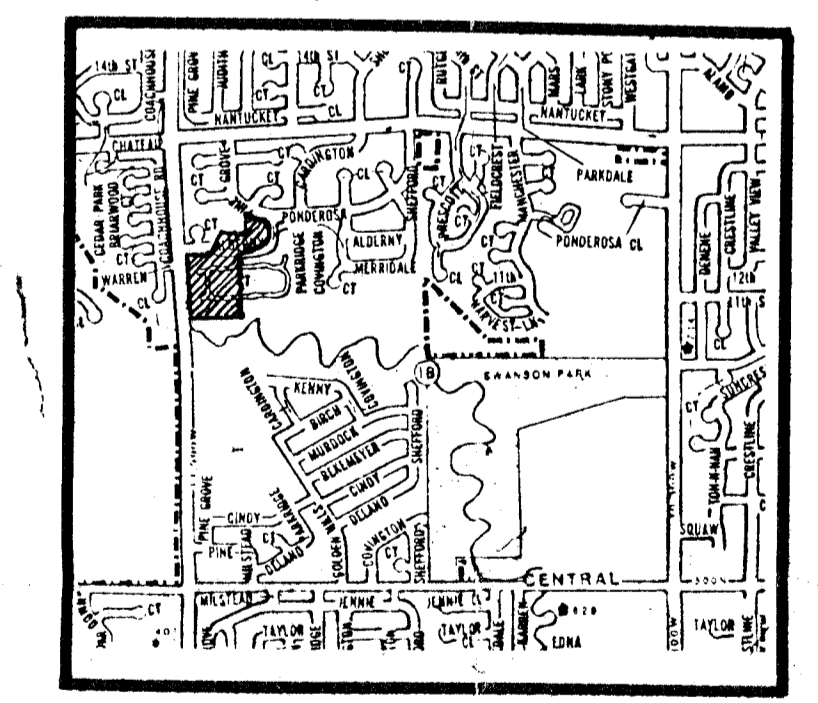
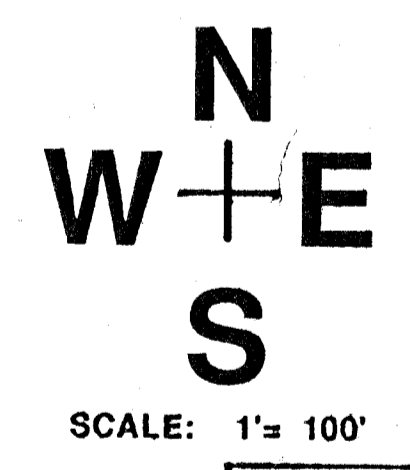
DRAINAGE CONCEPT PLAN SHALL BE PREPARED AND SUBMITTED BY PROFESSIONAL ENGINEERING CONSULTANTS.

MINIMUM PAD ELEVATIONS FOR ALL LOTS SHALL BE 1335.00 M.S.L.

LEGEND

- Drainage Direction - Minor storm
- ⇨ Drainage Direction - Major storm
- Proposed storm Water Sewer & Inlet
- ▬ Drainage Basin Boundary
- 148.7 Estimated top of Curb Elevation
- (100) Node Identification Point

Note: Contours shown are based on original aerial photography performed in March 1980. Area has subsequently been filled to proper elevation so that area has been removed from FEMA floodplain.



LOCATION MAP

DRAINAGE PLAN 11-27-01
PRELIMINARY PLAT (REPLAT OF A PORTION OF BRIARWOOD ESTATES 4TH & 5TH ADDITIONS)
BRIARWOOD ESTATES 6TH ADDITION

OWNER: SLAWSON INVESTMENT COMPANY, INC., 104 S. BROADWAY, WICHITA, KANSAS 67202 PH: 263-3201

PROFESSIONAL ENGINEERING CONSULTANTS, P.A.
 ENGINEERS
 WICHITA, KANSAS
 Job No. _____
 Date _____
 Designed by _____
 Drawn by _____



BILL G. YOUNG DESIGN
 412 E. 20TH STREET, NORTH
 WICHITA, KANSAS 67203
 316.263.5522
 FAX 316.263.5523

DATE: _____
 REV: _____

SHEET TITLE
 BRIARWOOD ESTATES
 6TH ADDITION

PROJECT
 PRELIMINARY PLAT



SHEET