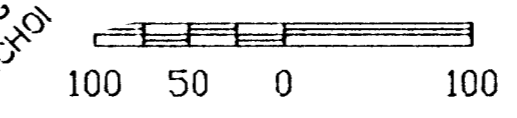
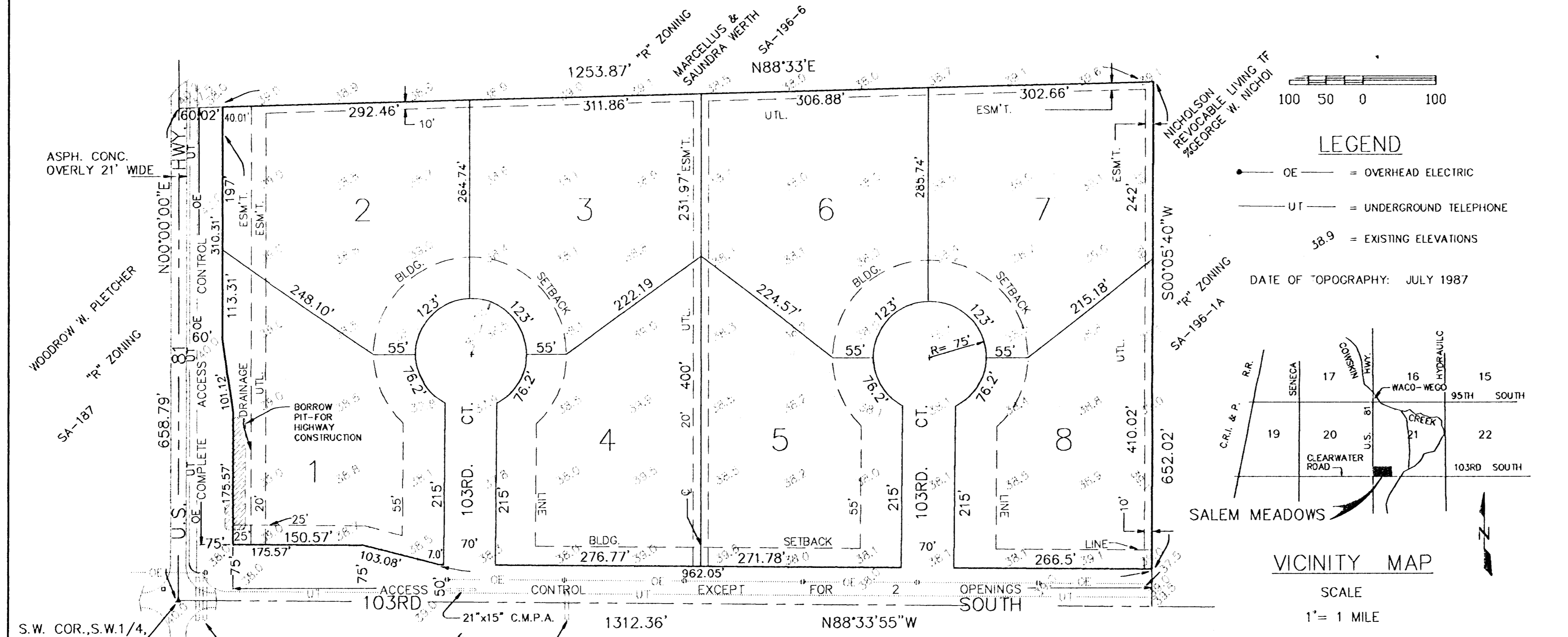


SALEM MEADOWS

SEDGWICK COUNTY, KANSAS

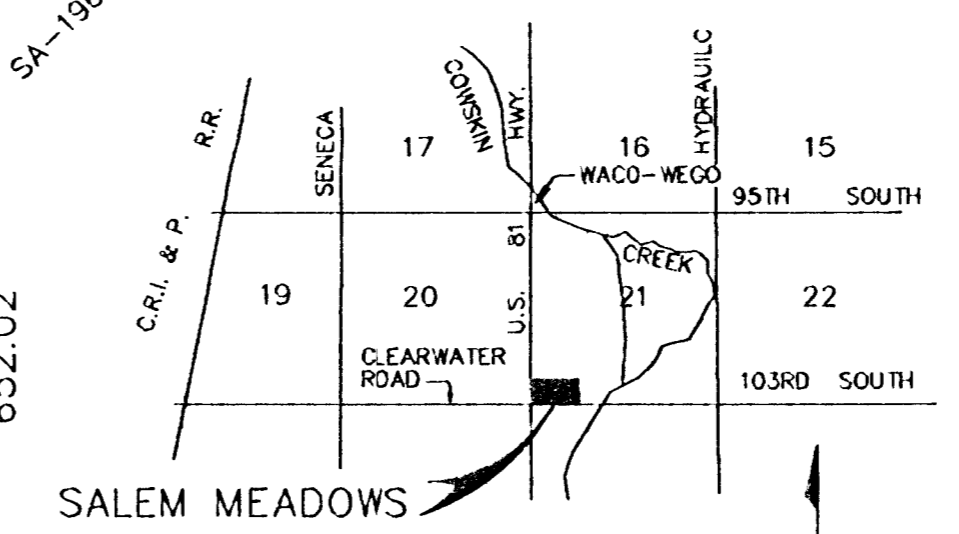
PRELIMINARY PLAT



LEGEND

- OE — = OVERHEAD ELECTRIC
- UT — = UNDERGROUND TELEPHONE
- 58.9 = EXISTING ELEVATIONS

DATE OF TOPOGRAPHY: JULY 1987



VICINITY MAP

SCALE
1" = 1 MILE

LEGAL DESCRIPTION

A REPLAT OF LOT 1, LIPPOLDT ADDITION, TO SEDGWICK COUNTY, KANSAS.

PLAT DATA

ZONING - "R"
 GROSS AREA = 20.5 ACRES
 MIN. LOT AREA = 2.05 Ac.±
 NO. OF LOTS = 8

S.W. COR., S.W. 1/4,
 SEC. 21, T. 29S., R. 1E.

ESTATE OF
 DORA A. BOOTH
 & JOHN A. BOOTH
 SA-245

OWNER:

MOBILE HOMES RESORT, INC.
 3820 SO. SENECA
 WICHITA, KANSAS 67217

BM:

R.R. SPIKE IN POWER POLE
 N.E. COR. OF U.S. 81 HIGHWAY
 AND 103RD SOUTH, ELEV. = 1240.12

ENGINEERS:

CASTLE & ASSOCIATES
 P.O. BOX 9262
 WICHITA, KS. 67277

MOBILE HOMES RESORT, INC. WICHITA, KANSAS	
PRELIMINARY PLAT SALEM MEADOWS SEDGWICK COUNTY	
CASTLE & ASSOCIATES ENGINEERS WICHITA, KANSAS DATE FEBRUARY 1994	DSG DR CH APP DWG FILE NO 9421 - C - 10,132 SHEET NO 1 OF 1