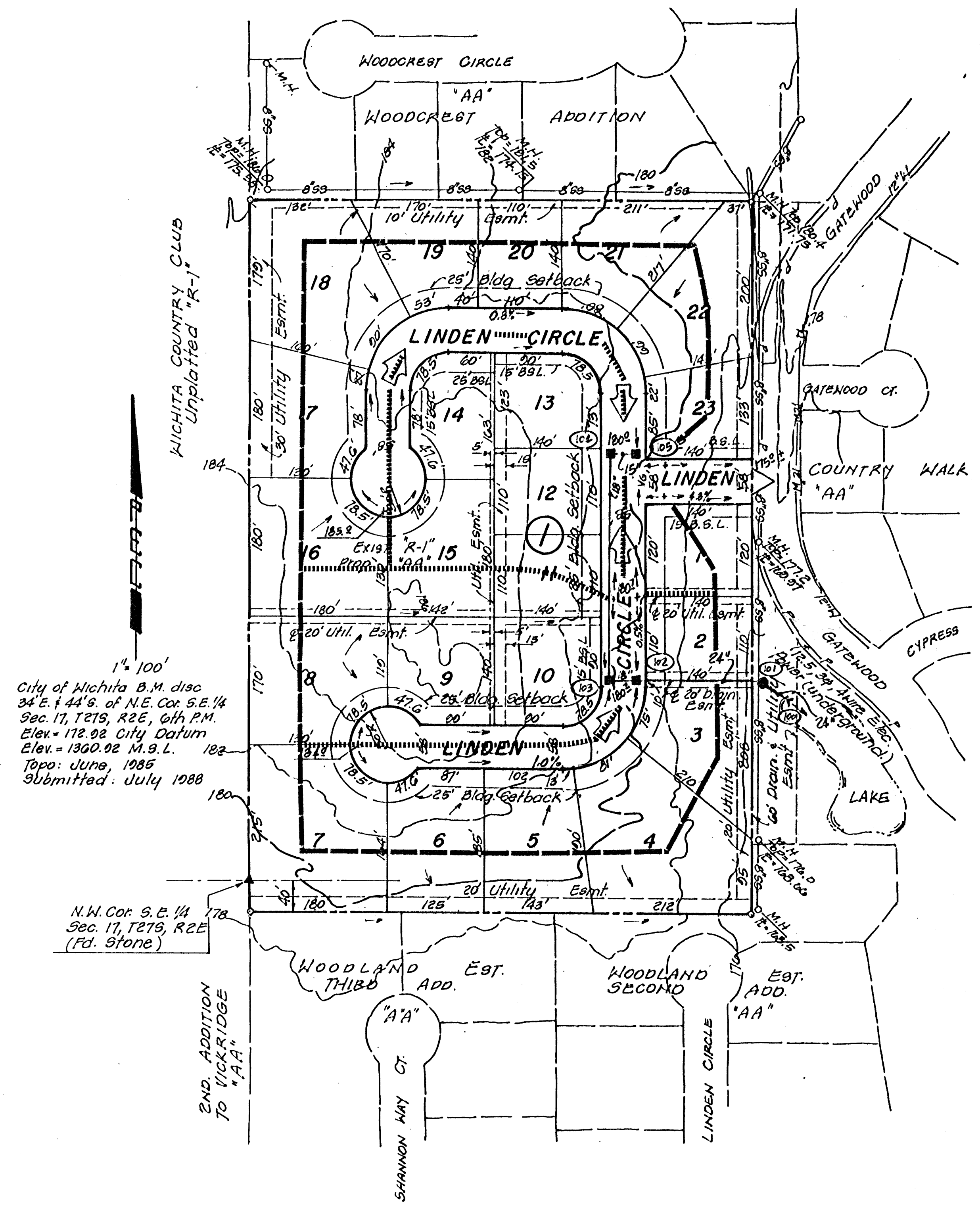


DRAINAGE PLAN ROUNDS ESTATES

Owner:
Dwight M. Rounds T. Trust
c/o Betty B. Rounds
330 N. Terrace
Wichita, Ks. 67208

Developer:
Ron Peake
1700 Tamarisk
Wichita, Ks. 67230

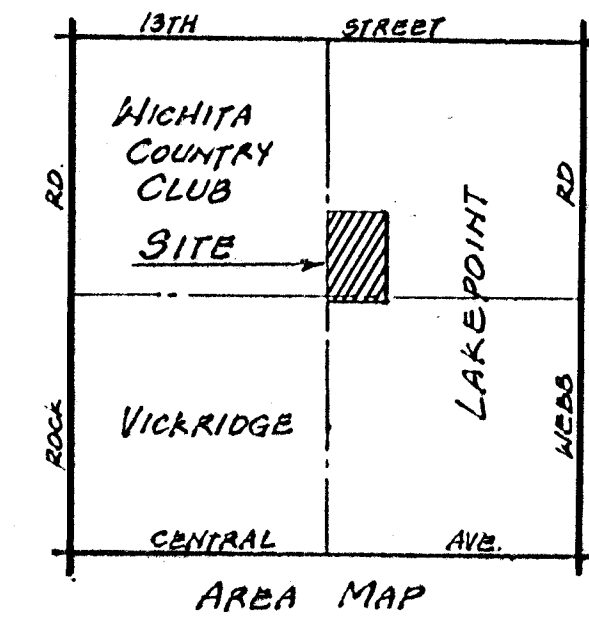
Engineer:
P.E.C. p.a.
1440 English
Wichita, Ks. 67211



1" = 100'
City of Wichita B.M. disc
34° E. + 44' S. of N.E. Cor. S.E. 1/4
Sec. 17, T21S, R2E, 6th P.M.
Elev. = 172.92 City Datum
Elev. = 1360.02 M.S.L. 182
Toppo: June, 1985
Submitted: July 1988

N.W. Cor. S.E. 1/4
Sec. 17, T21S, R2E
(Fd. Stone)

2ND. ADDITION
TO VICKRIDGE
"AA"



LEGEND

- Drainage Direction - Minor Storm
- Drainage Direction - Major Storm
- Proposed Storm Water Sewer & Inlet
- Proposed Valley Gutter
- Drainage Basin Boundary
- Drainage Sub-basin Boundary
- Node Identification Point
- Prop. Top Curb Elev.

