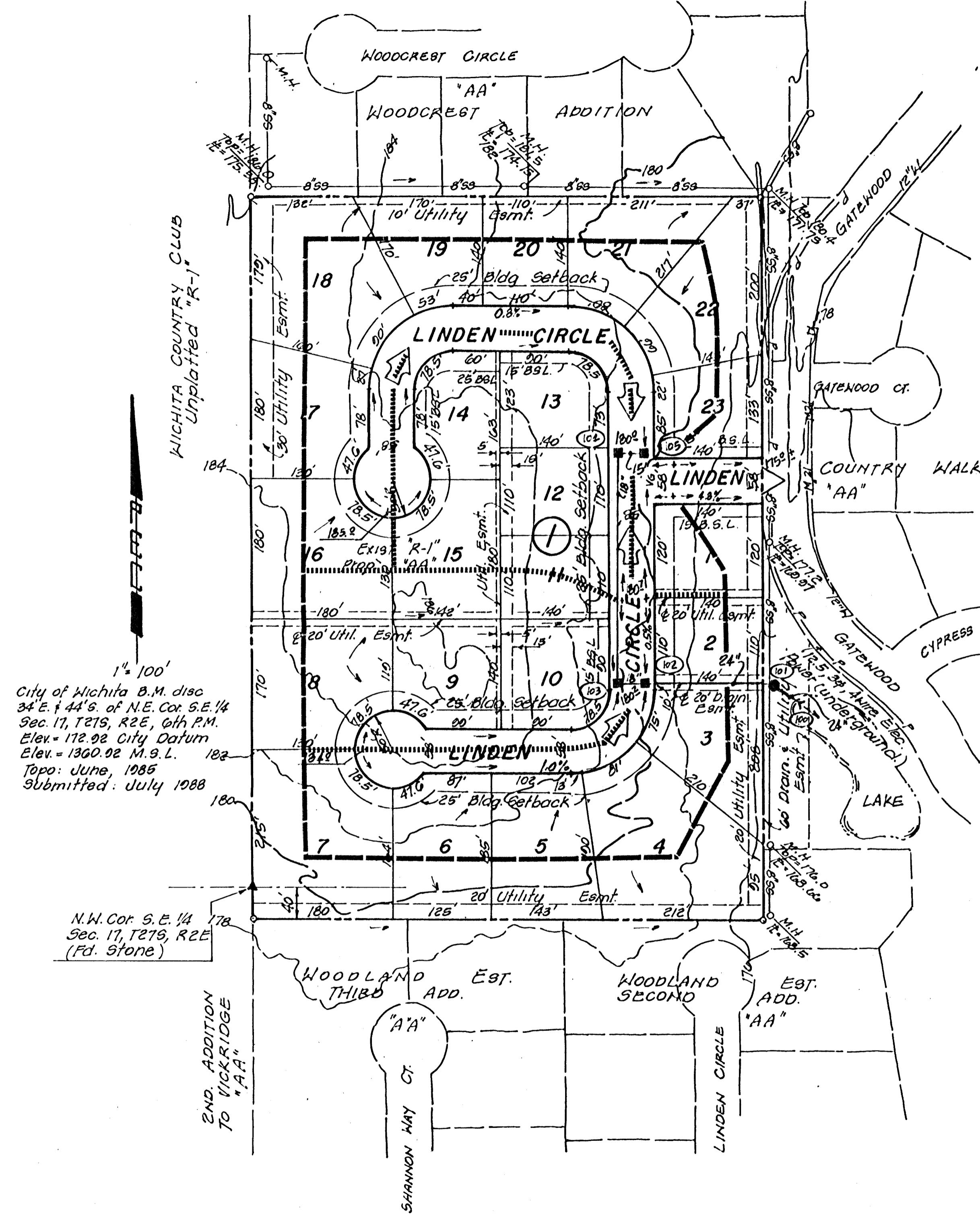


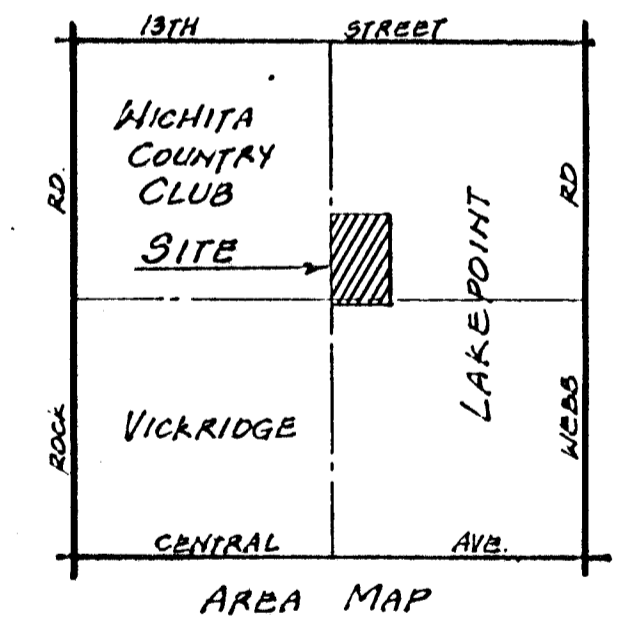
DRAINAGE PLAN
ROUNDS ESTATES

Owner:
 Dwight M. Rounds T. Trust
 c/o Betty B. Rounds
 330 N. Terrace
 Wichita, Ks. 67208
 Developer:
 Ron Peake
 1700 Tamarisk
 Wichita, Ks. 67230
 Engineer:
 P.E.C. p.a.
 1440 English
 Wichita, Ks. 67211



City of Wichita B.M. disc
 34' E. + 44' S. of N.E. Cor. S.E. 1/4
 Sec. 17, T21S, R2E, 6th P.M.
 Elev. = 172.02 City Datum
 Elev. = 1360.02 M.S.L.
 Topo: June, 1985
 Submitted: July 1988

N.W. Cor. S.E. 1/4
 Sec. 17, T21S, R2E
 (Fd. Stone)



- LEGEND**
- Drainage Direction - Minor Storm
 - ↗ Drainage Direction - Major Storm
 - Proposed Storm Water Sewer & Inlet
 - V— Proposed Valley Gutter
 - Drainage Basin Boundary
 - Drainage Sub-basin Boundary
 - (182) Node Identification Point
 - 182.2 Prop. Top Curb Elev.