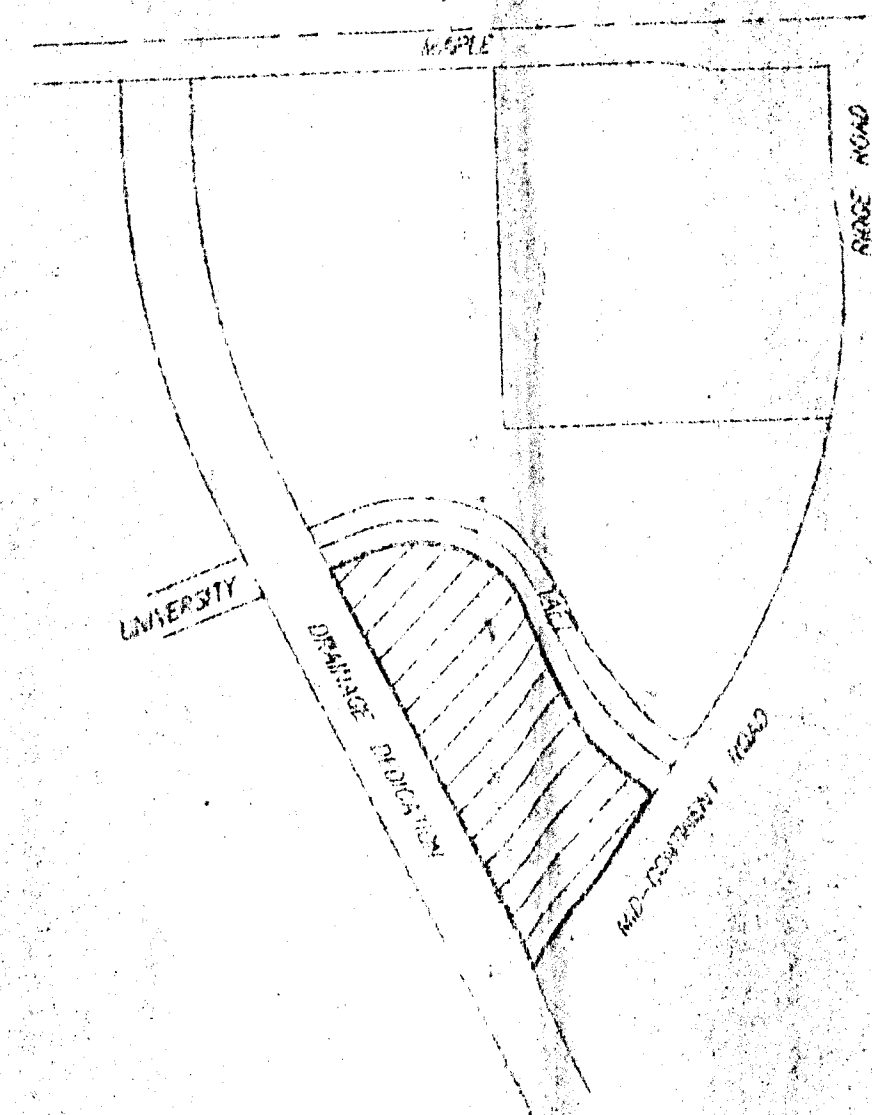


# SKETCH PLAT RIDGE PLAZA 11TH

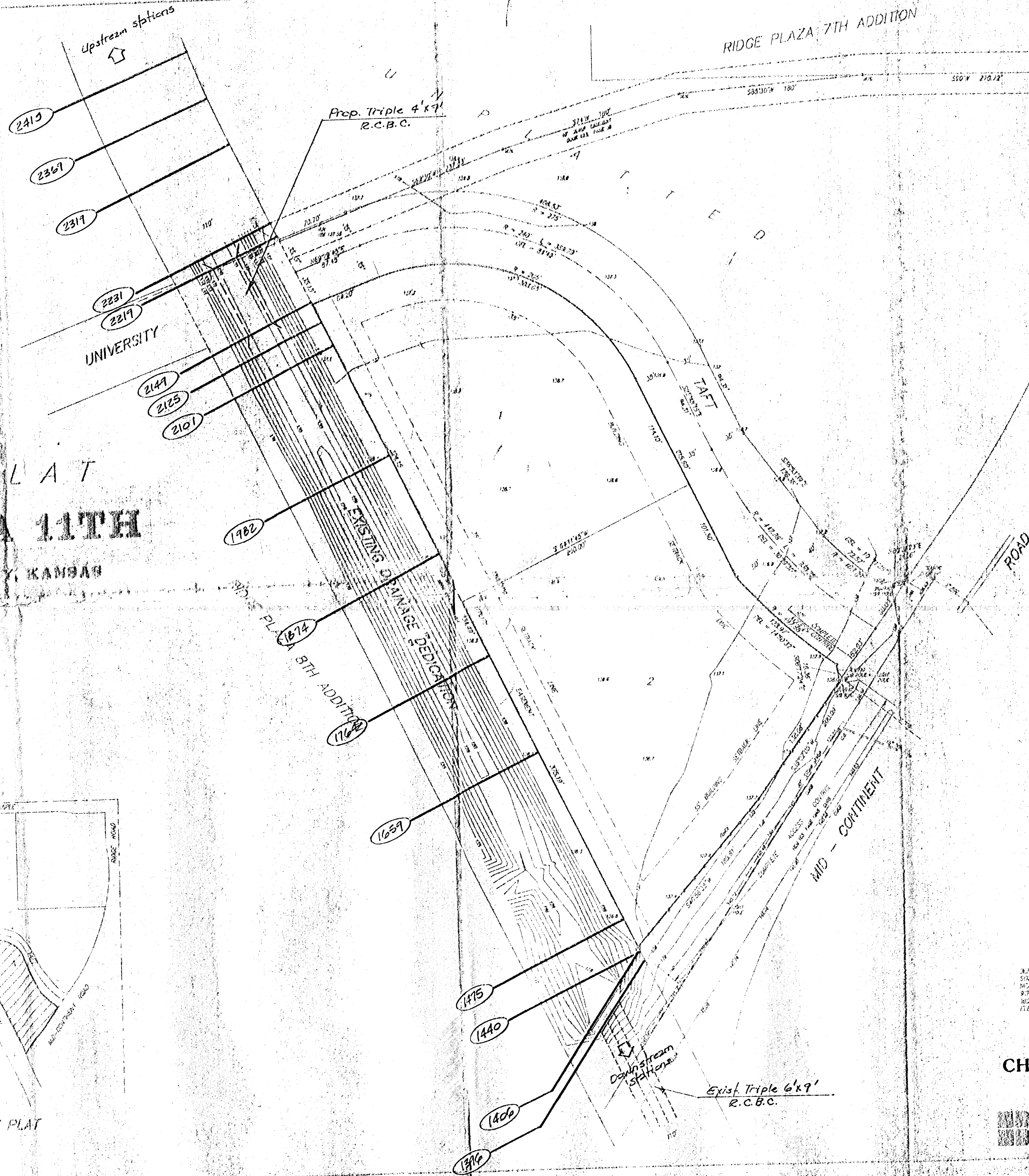
WICHITA, SEDGWICK COUNTY, KANSAS

TRACT IN THE NE 1/4 OF SEC. 28, TWP. 27-S, R-1-W  
OF THE 8TH P.M., SEDGWICK COUNTY, KANSAS.

BOYEM H. & MARK E. BRADY  
6405 E. KELLOGG  
WICHITA, KS 67218



VICINITY PLAT



## EXHIBIT C CHANNEL BASEMAP

BAUGHMAN COMPANY P.A.  
ENGINEERING & SURVEYING  
310/280-2271 • 310/280-2272 • 310/280-2273  
8/19/21