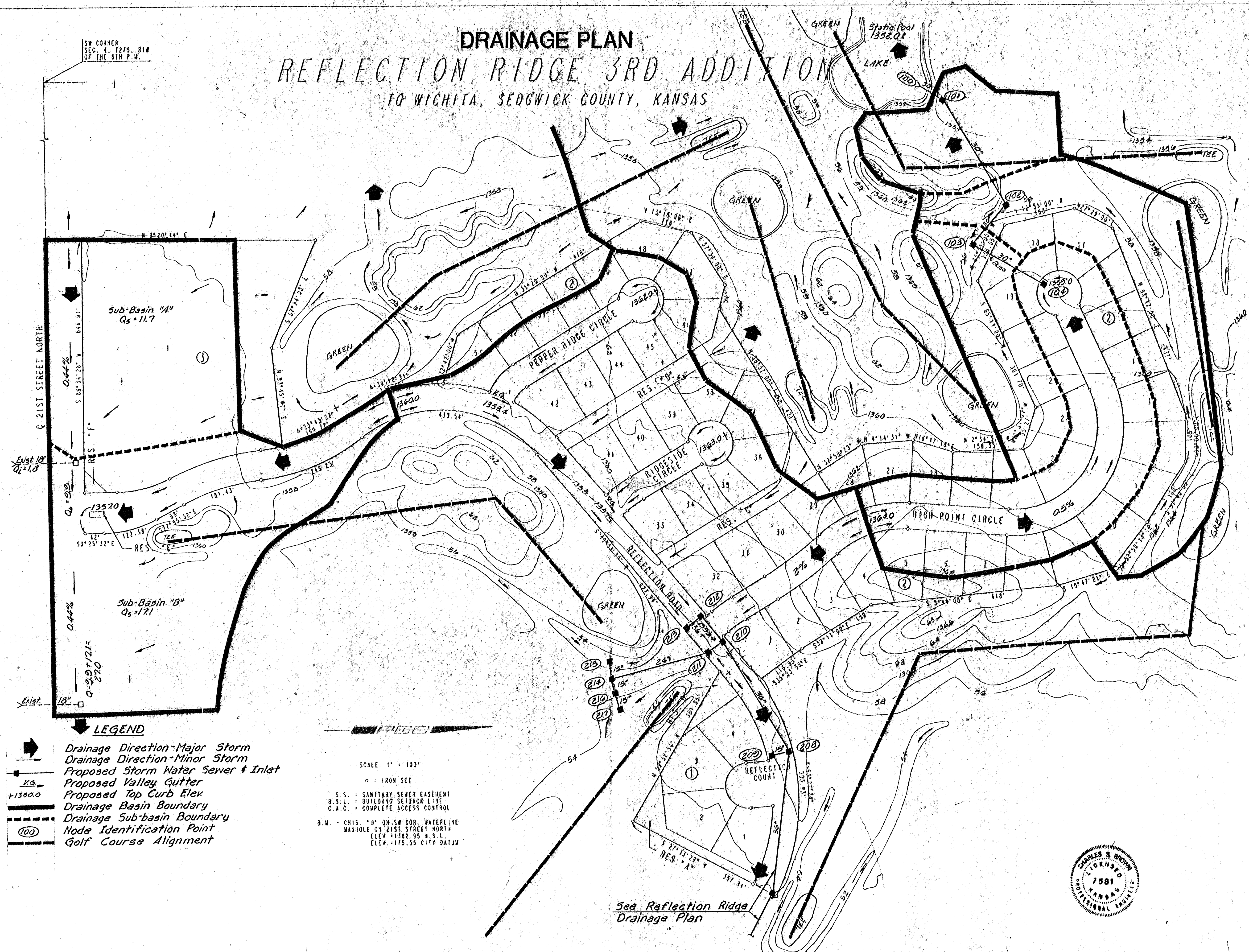


DRAINAGE PLAN

REFLECTION RIDGE 3RD ADDITION

TO WICHITA, SEDGWICK COUNTY, KANSAS

SW CORNER
SEC. 4, T21S, R1W
OF THE 6TH P.M.



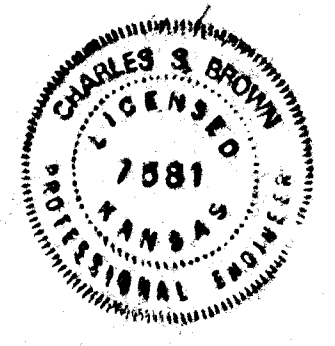
- LEGEND**
- Drainage Direction-Major Storm
 - Drainage Direction-Minor Storm
 - Proposed Storm Water Sewer & Inlet
 - Proposed Valley Gutter
 - Proposed Top Curb Ele
 - Drainage Basin Boundary
 - Drainage Sub-basin Boundary
 - Node Identification Point
 - Golf Course Alignment

SCALE: 1" = 100'

○ = IRON SET

S.S. = SANITARY SEWER EASEMENT
 B.S.L. = BUILDING SETBACK LINE
 C.A.C. = COMPLETE ACCESS CONTROL

B.M. = CHIS. "0" ON SW COR. WATERLINE
 MANHOLE ON 21ST STREET NORTH
 ELEV. +1382.35 W.S.L.
 ELEV. +175.55 CITY DATUM



See Reflection Ridge
Drainage Plan

Revised 2-14-87

170 C